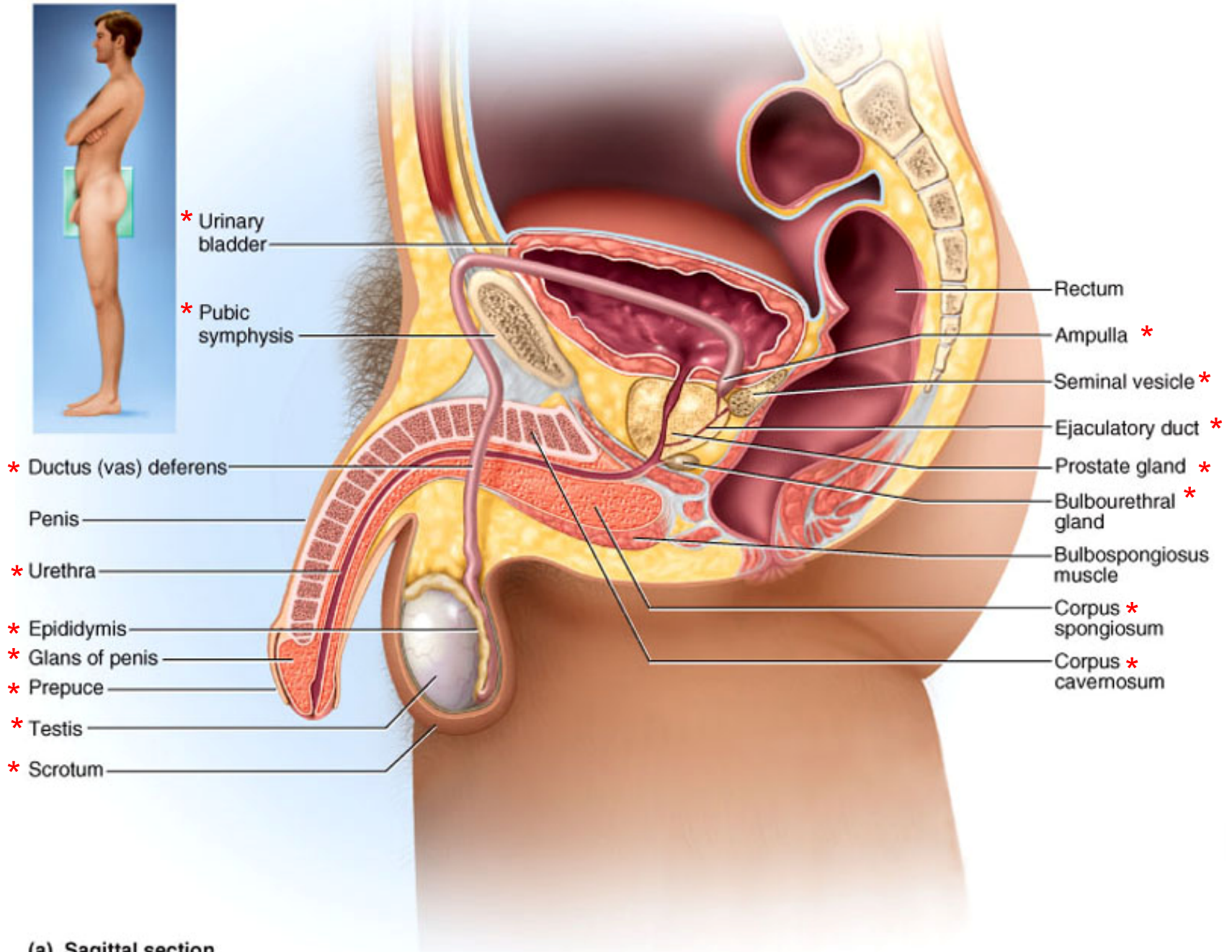
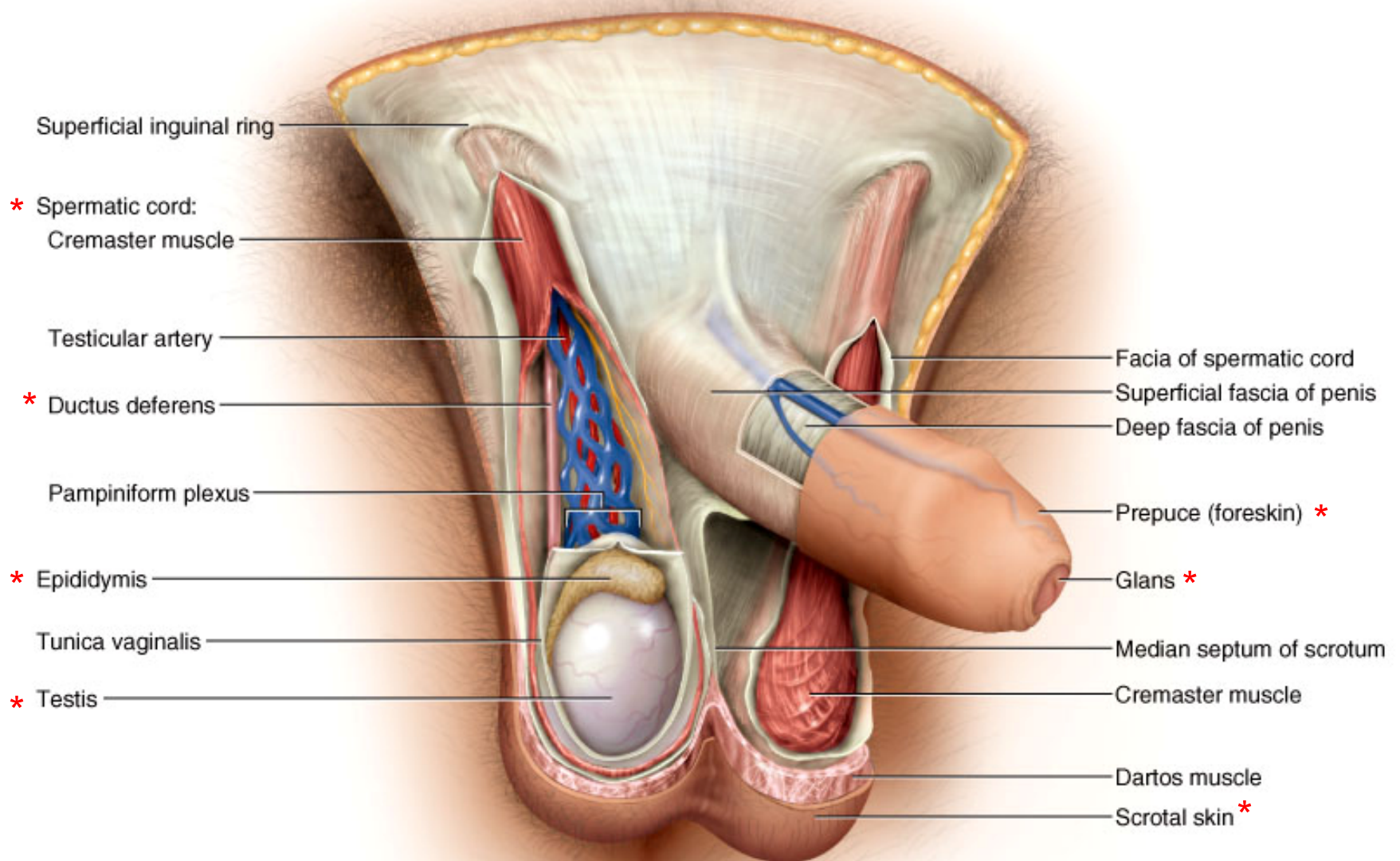


Male Reproductive Organs

You need to know all structures marked with a red asterisk !

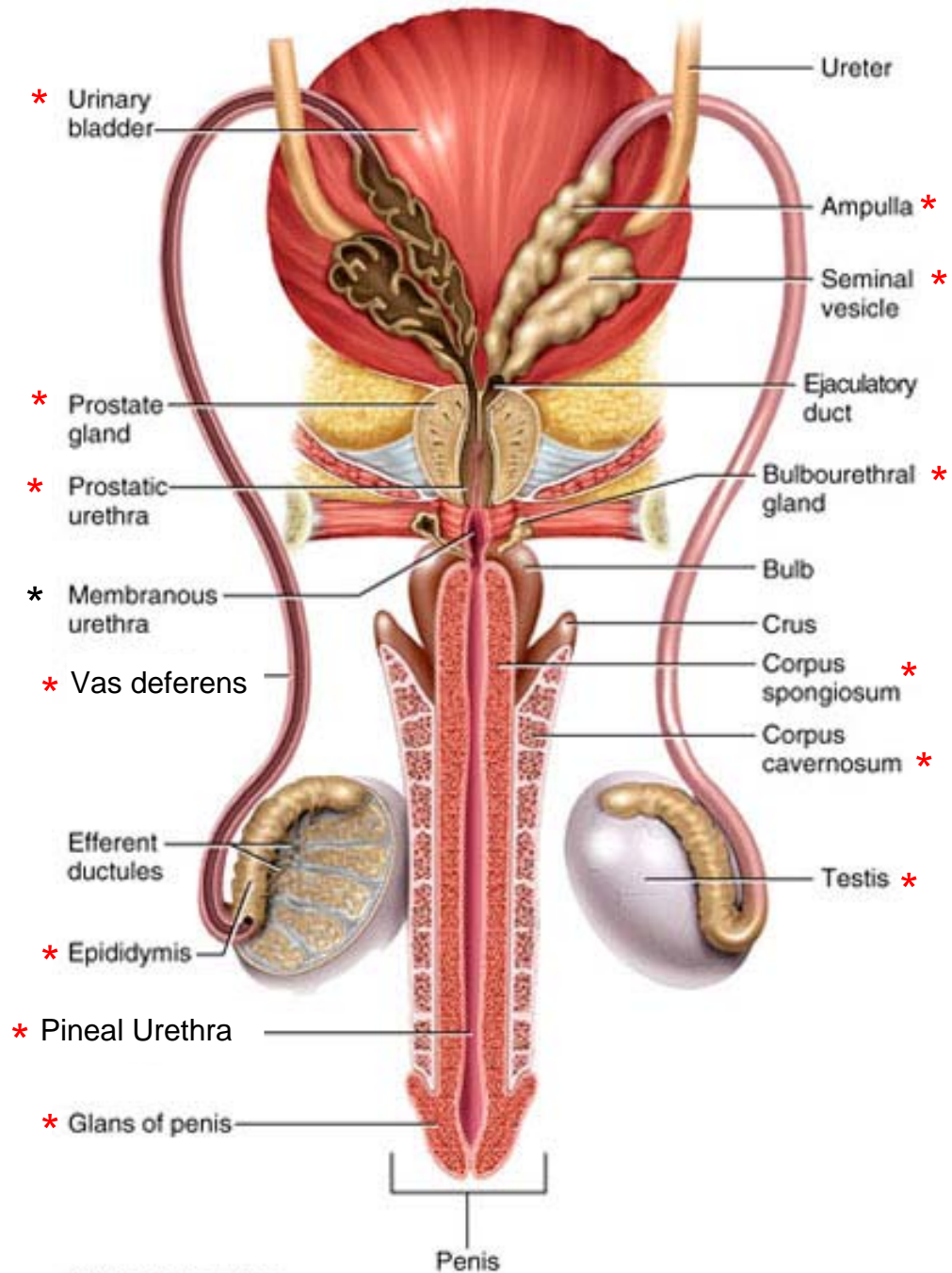


(a) Sagittal section

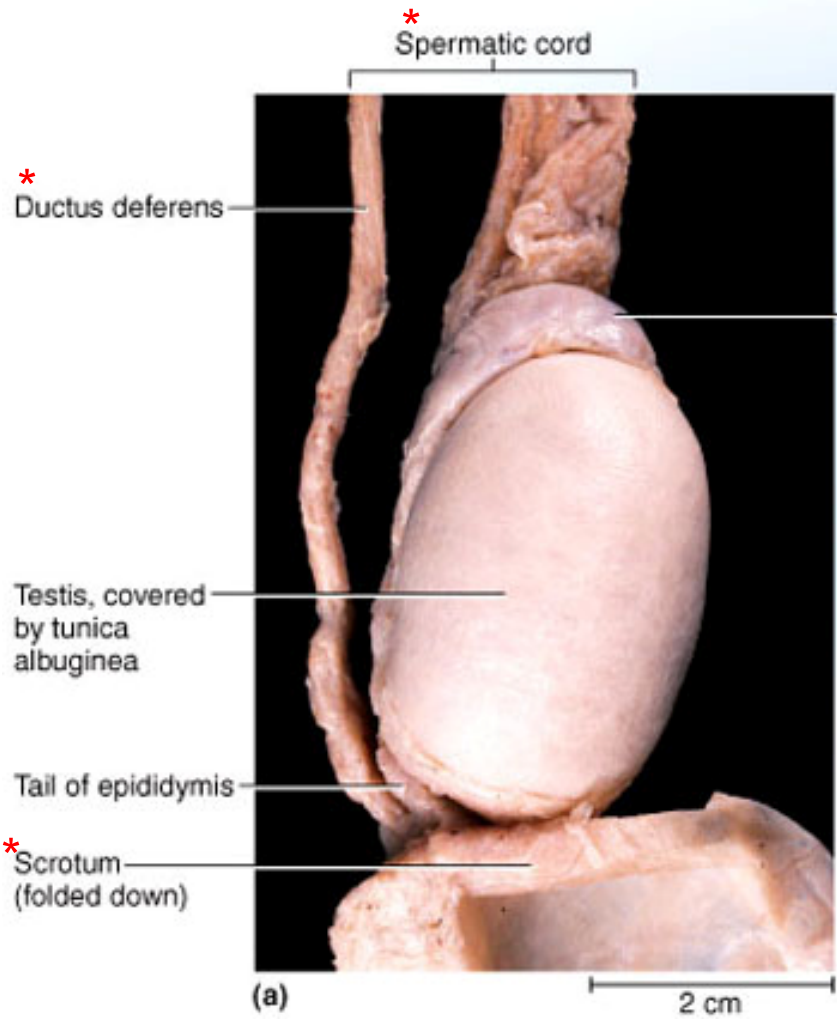


Note: Ductus deferens = Vas deferens

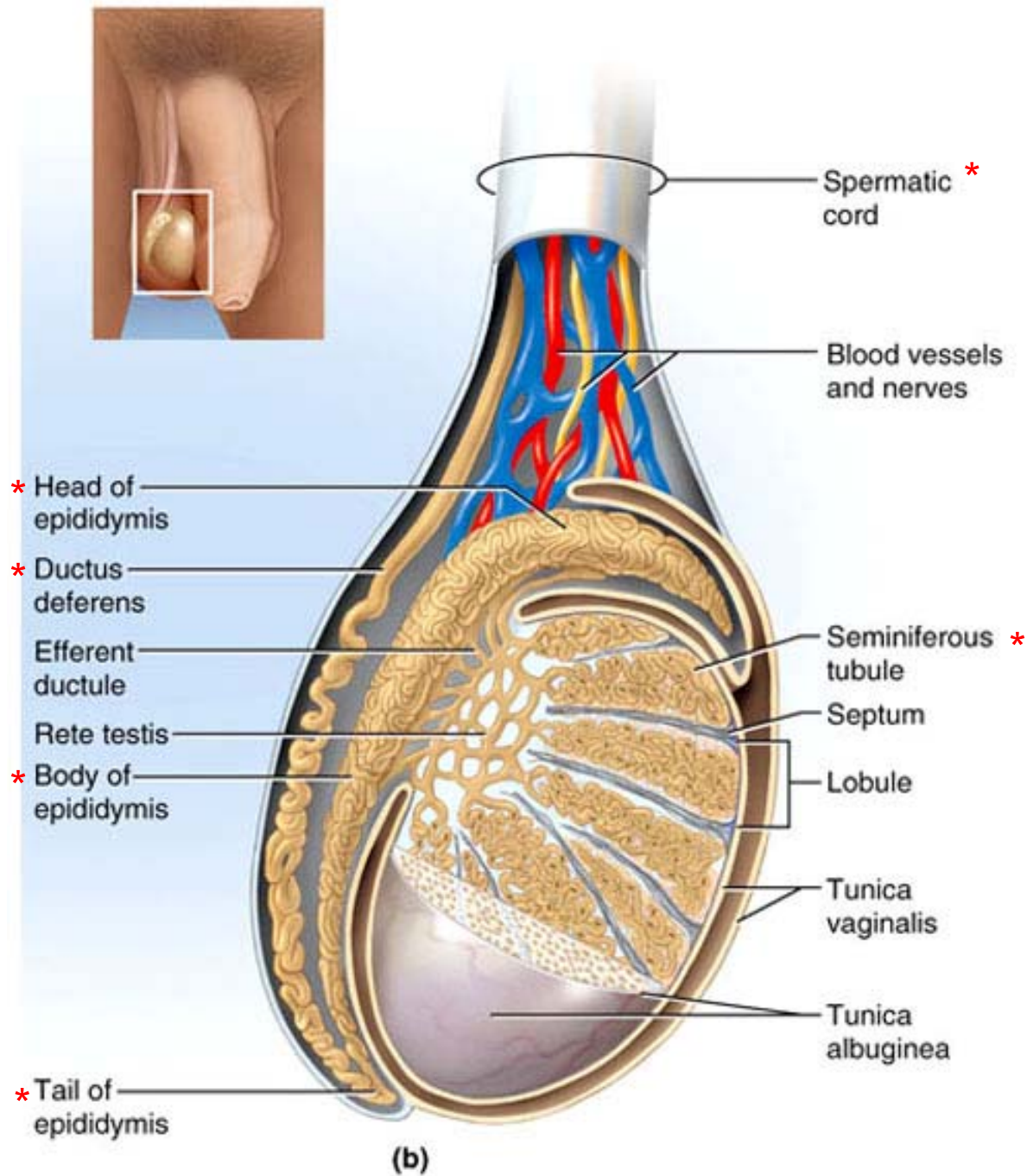
Male Duct System

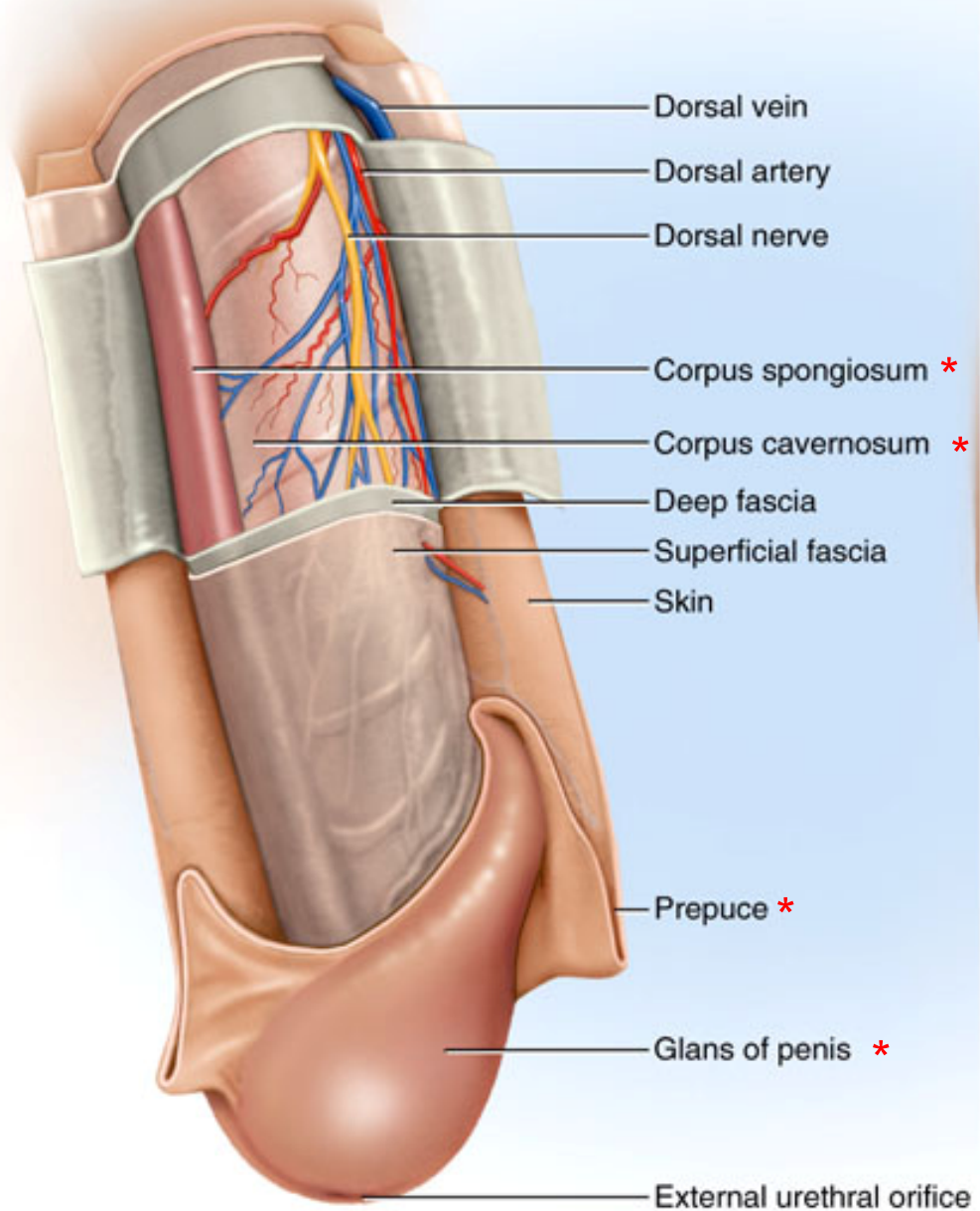


(b) Posterior view

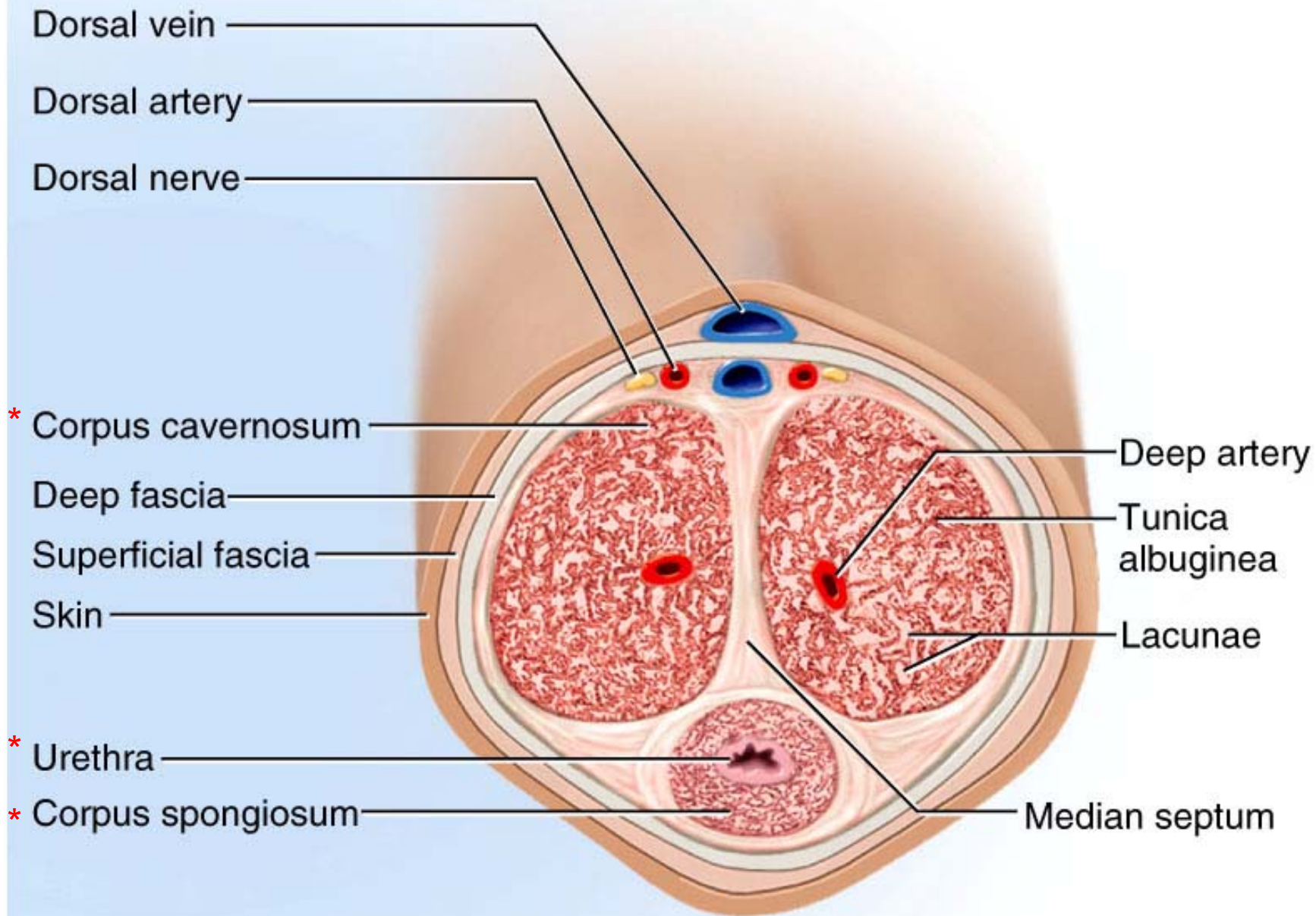


Head of the epididymis*



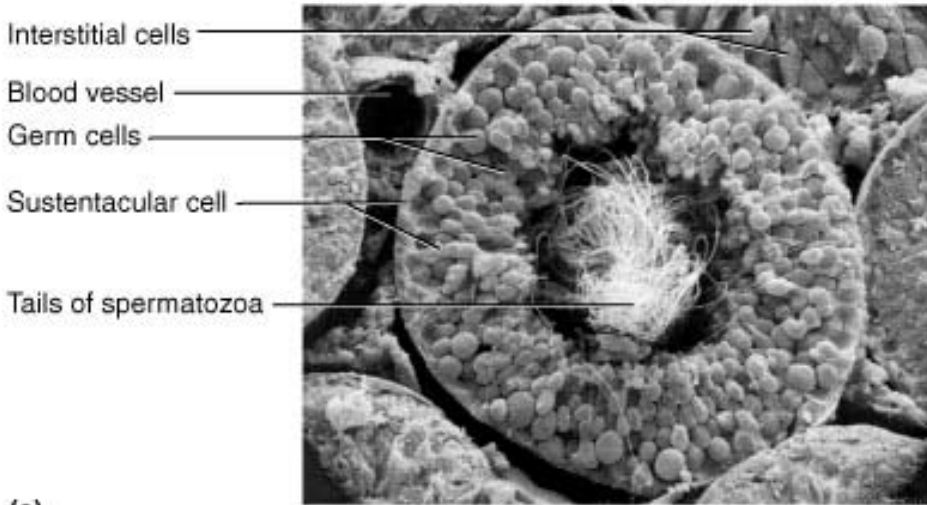


(a)

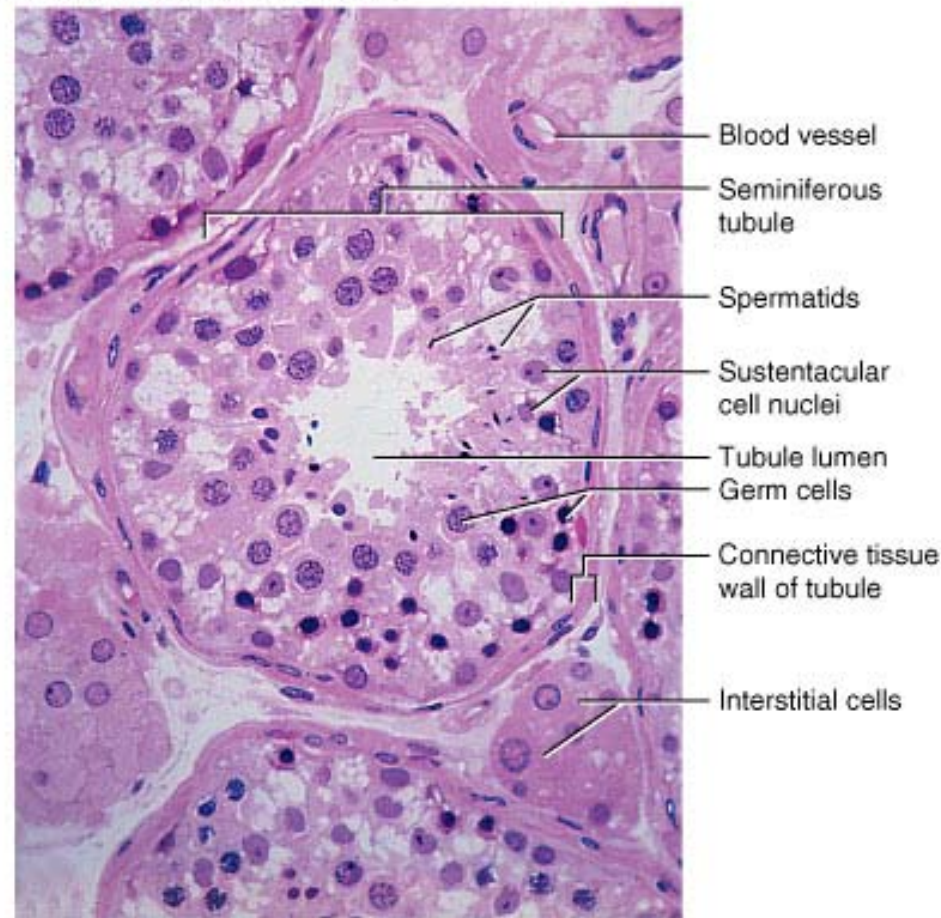


(b)

Copyright © The McGraw-Hill Companies, Inc. Permission required for reproduction or display.



(a)



(b)

50 μ m

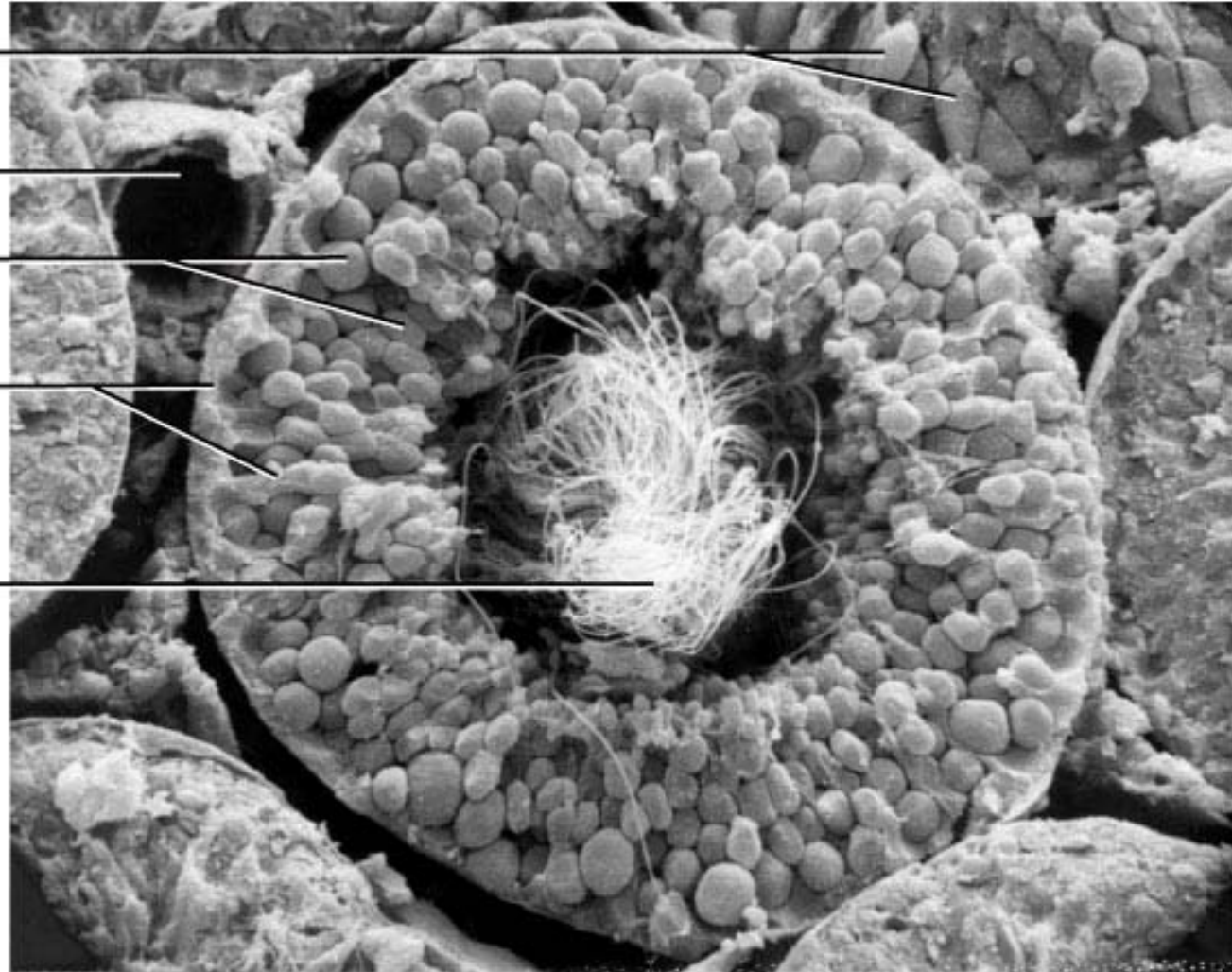
Interstitial cells

Blood vessel

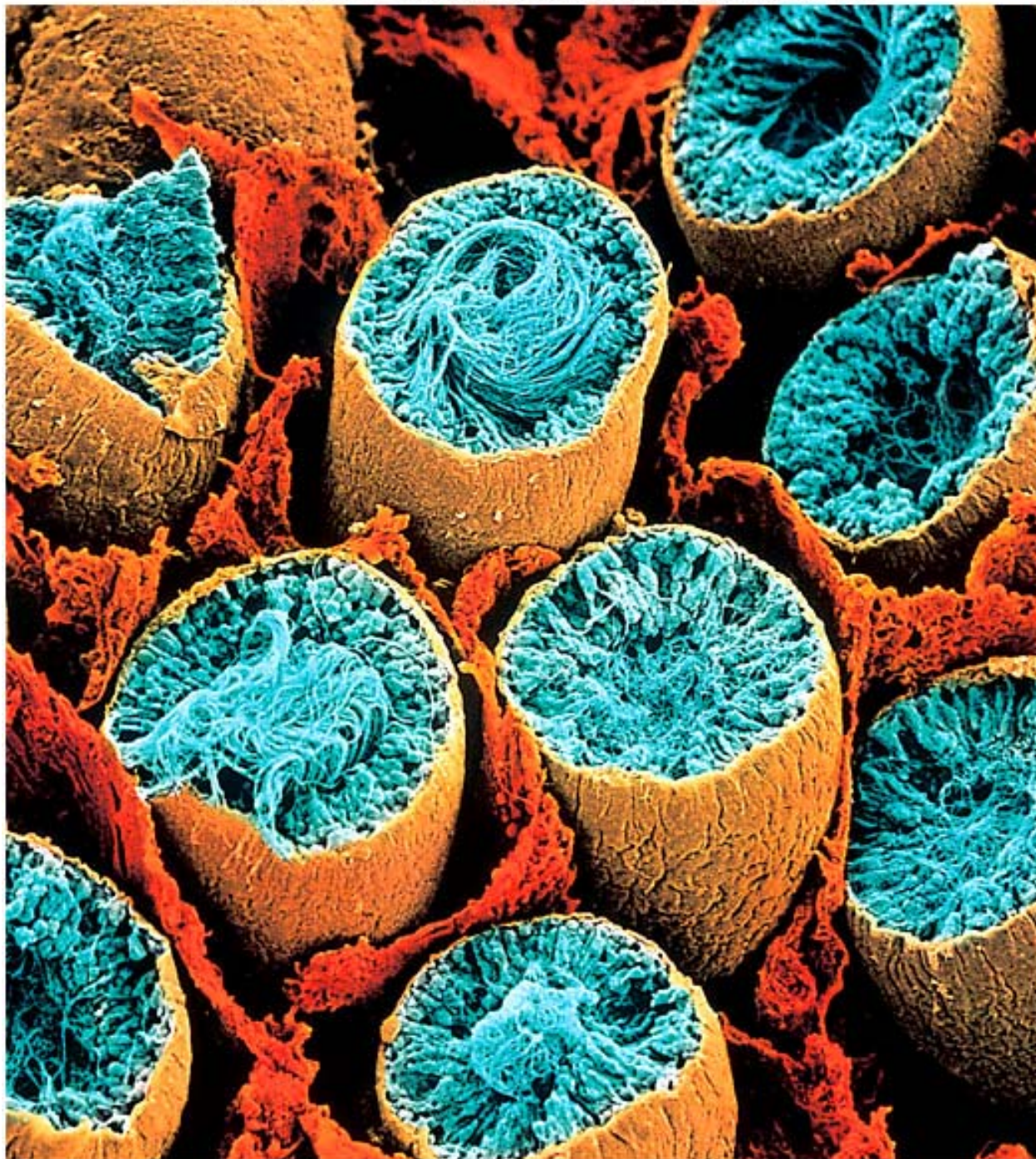
Germ cells

Sustentacular cell

Tails of spermatozoa



(a)



Embryonic Development

Copyright © The McGraw-Hill Companies, Inc. Permission required for reproduction or display.

