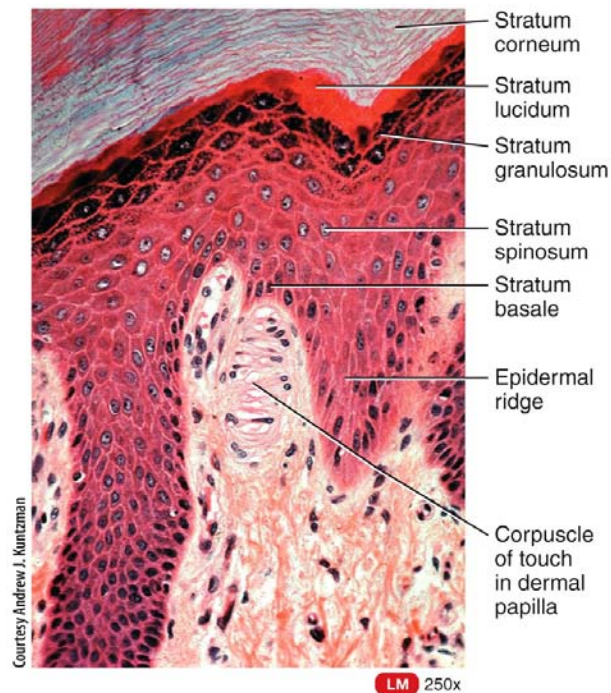
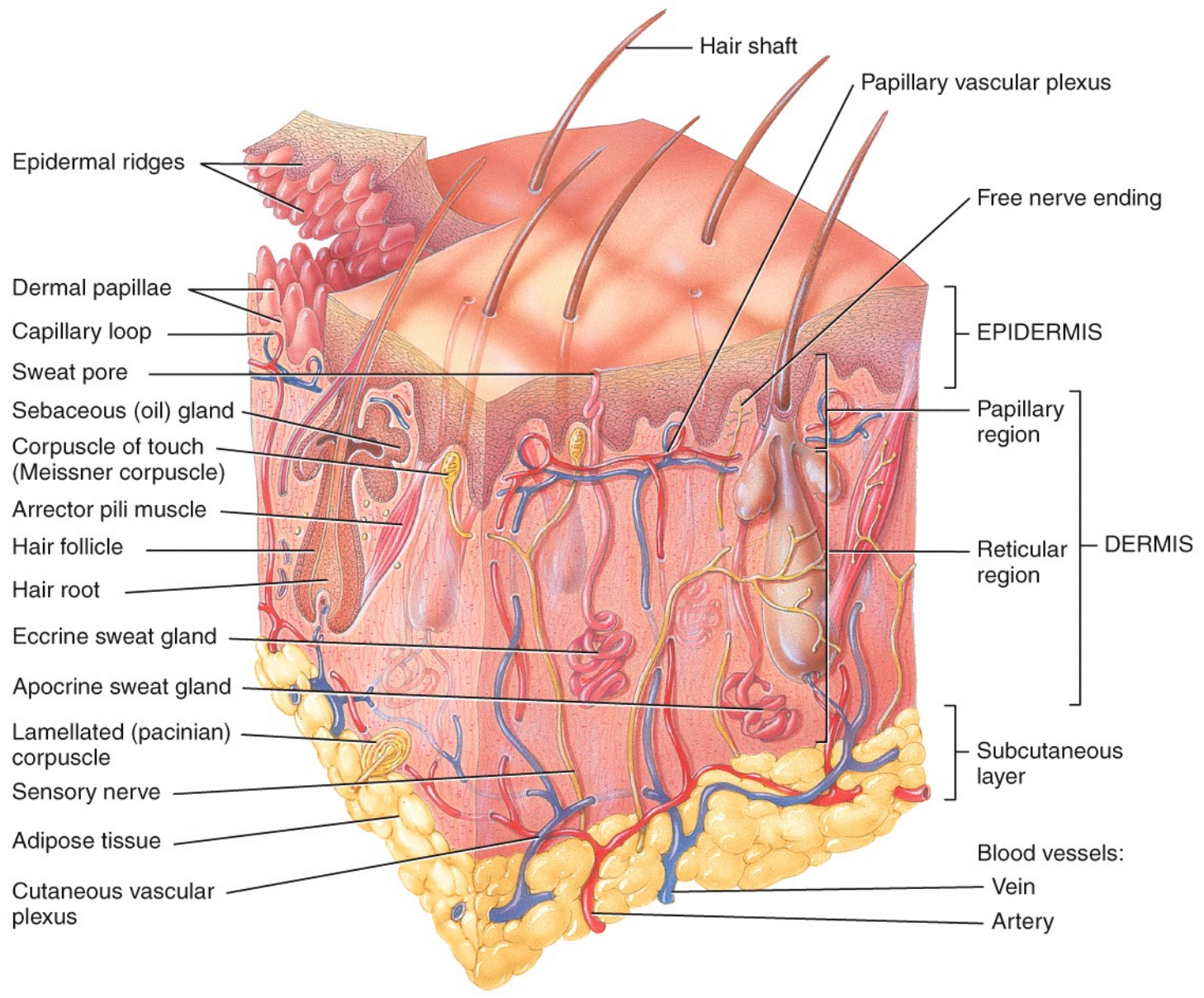


C5.6

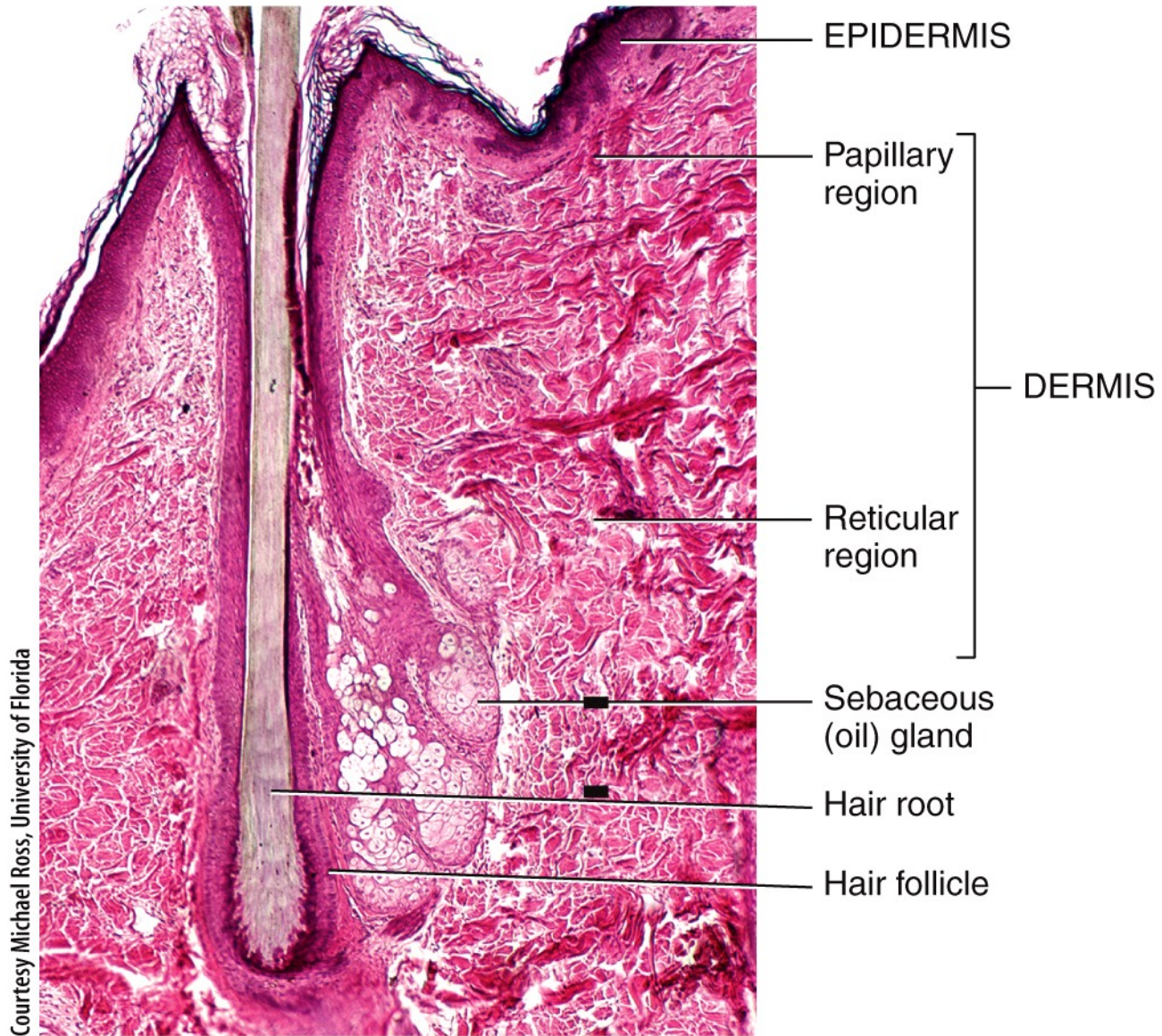
Images of the Integument System (Skin)



(d) Sectional view of dermal papillae, epidermal ridges, and epidermal layers

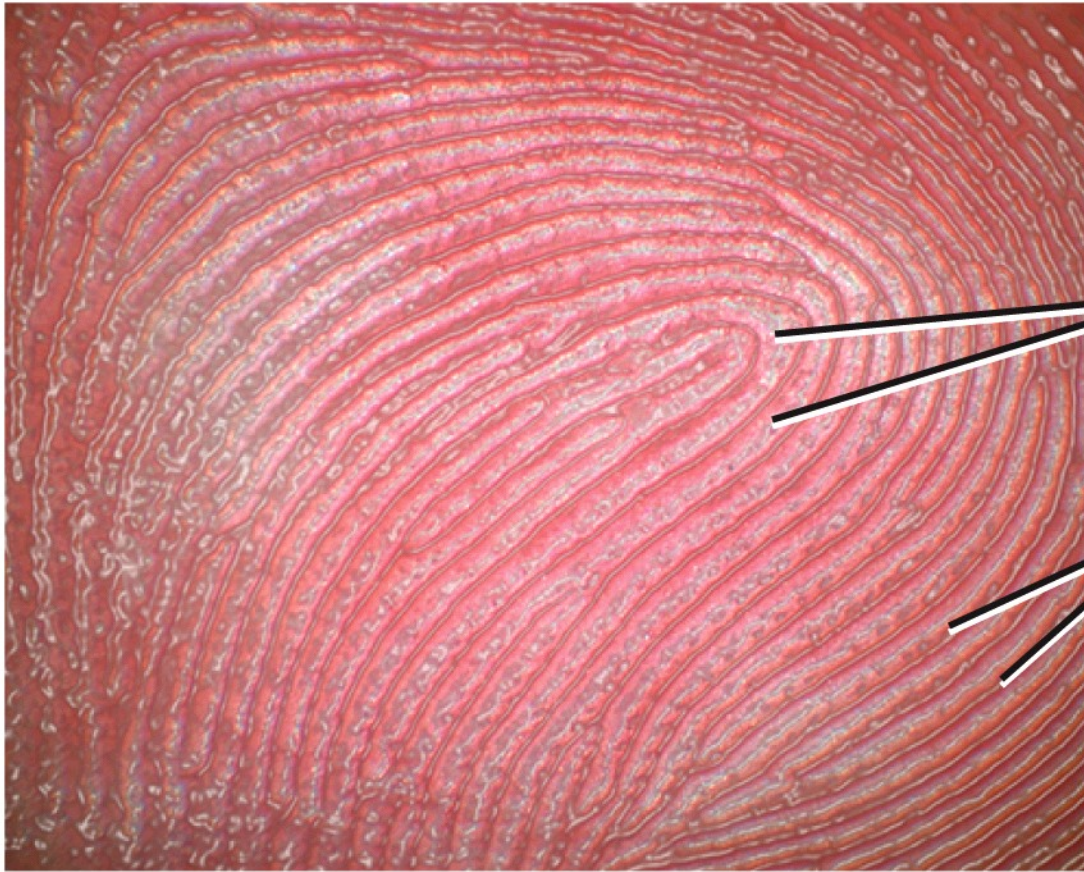


(a) Sectional view of skin and subcutaneous layer



LM 60x

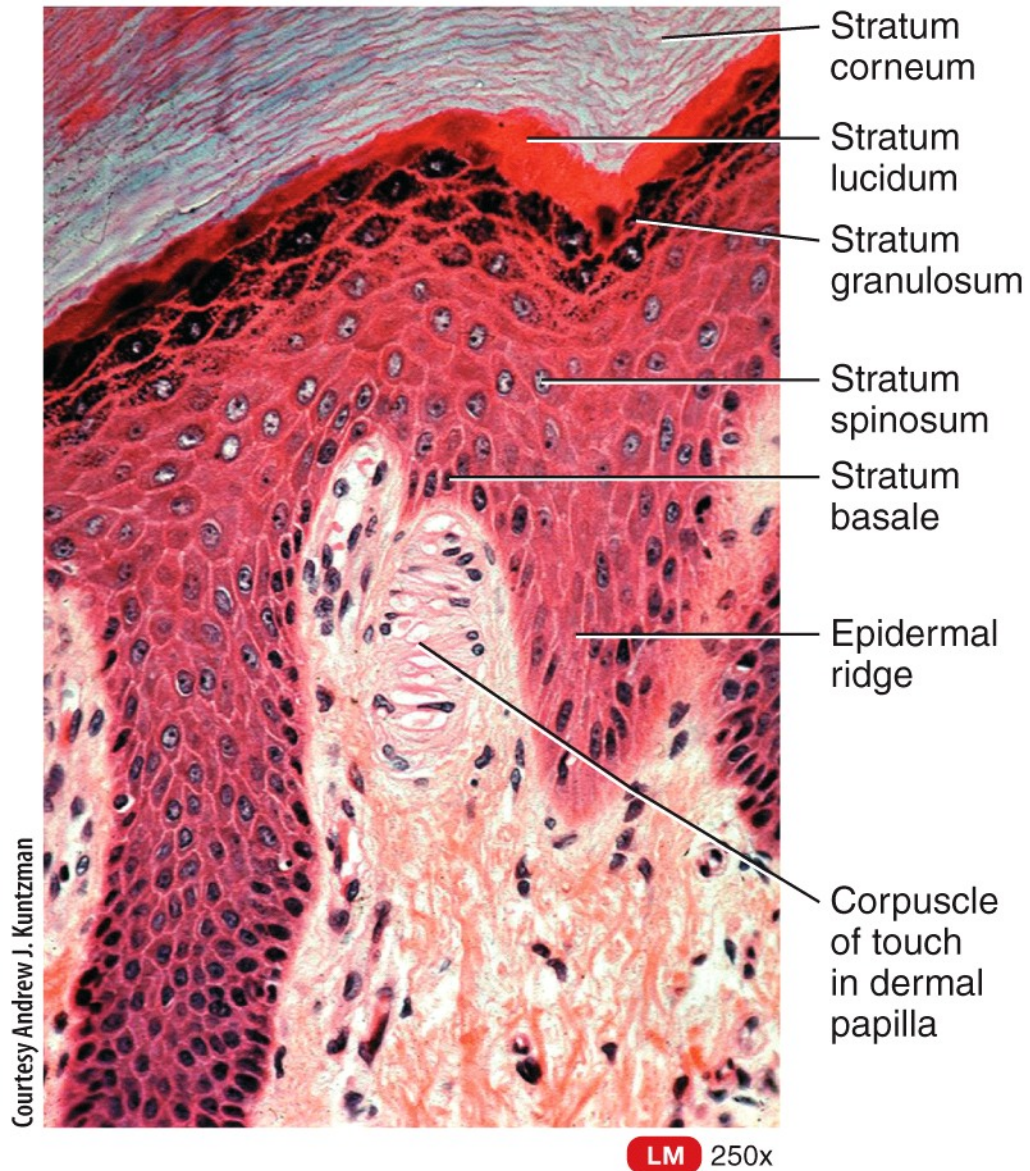
(b) Sectional view of skin



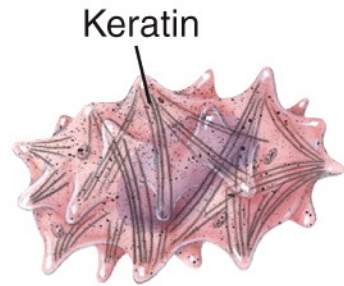
Sweat pores

Epidermal
ridges

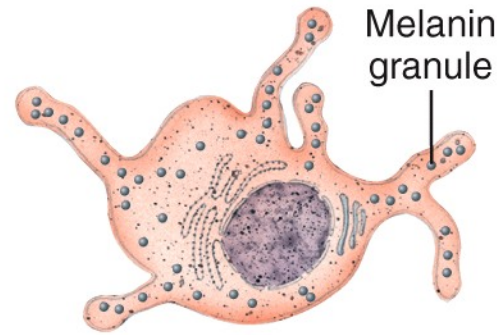
(c) Epidermal ridges and sweat pores



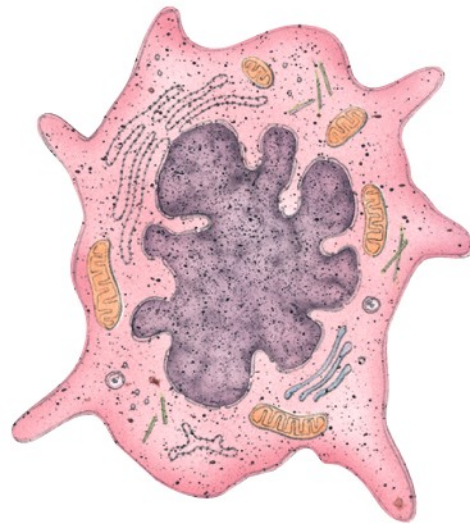
(d) Sectional view of dermal papillae, epidermal ridges, and epidermal layers



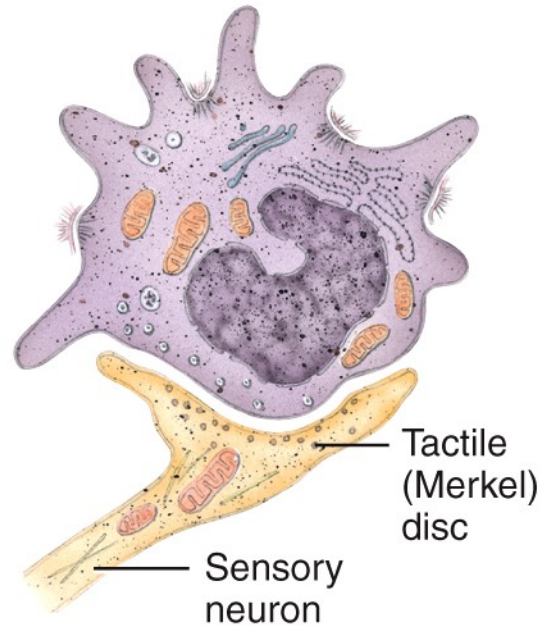
(a) Keratinocyte



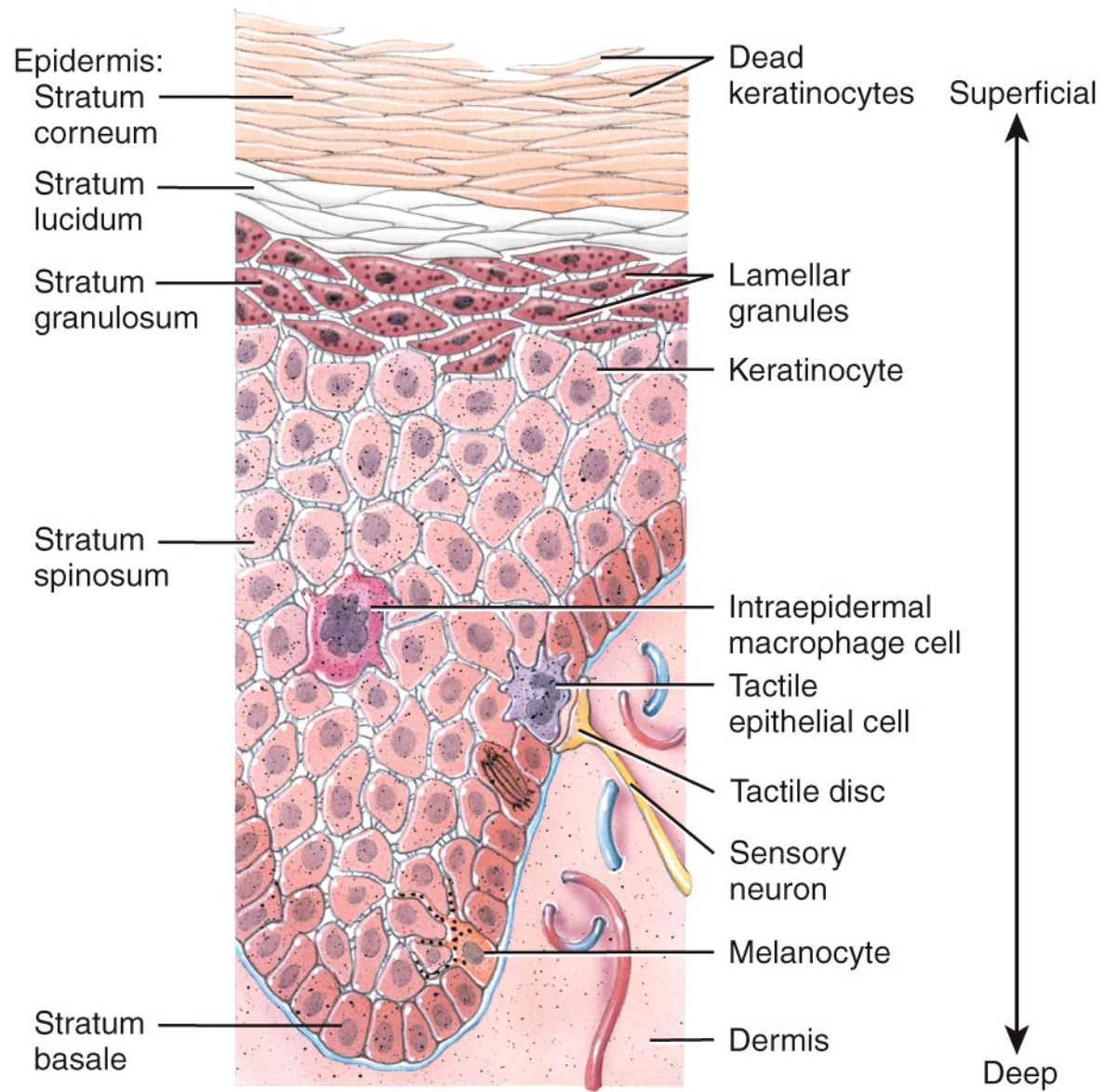
(b) Melanocyte



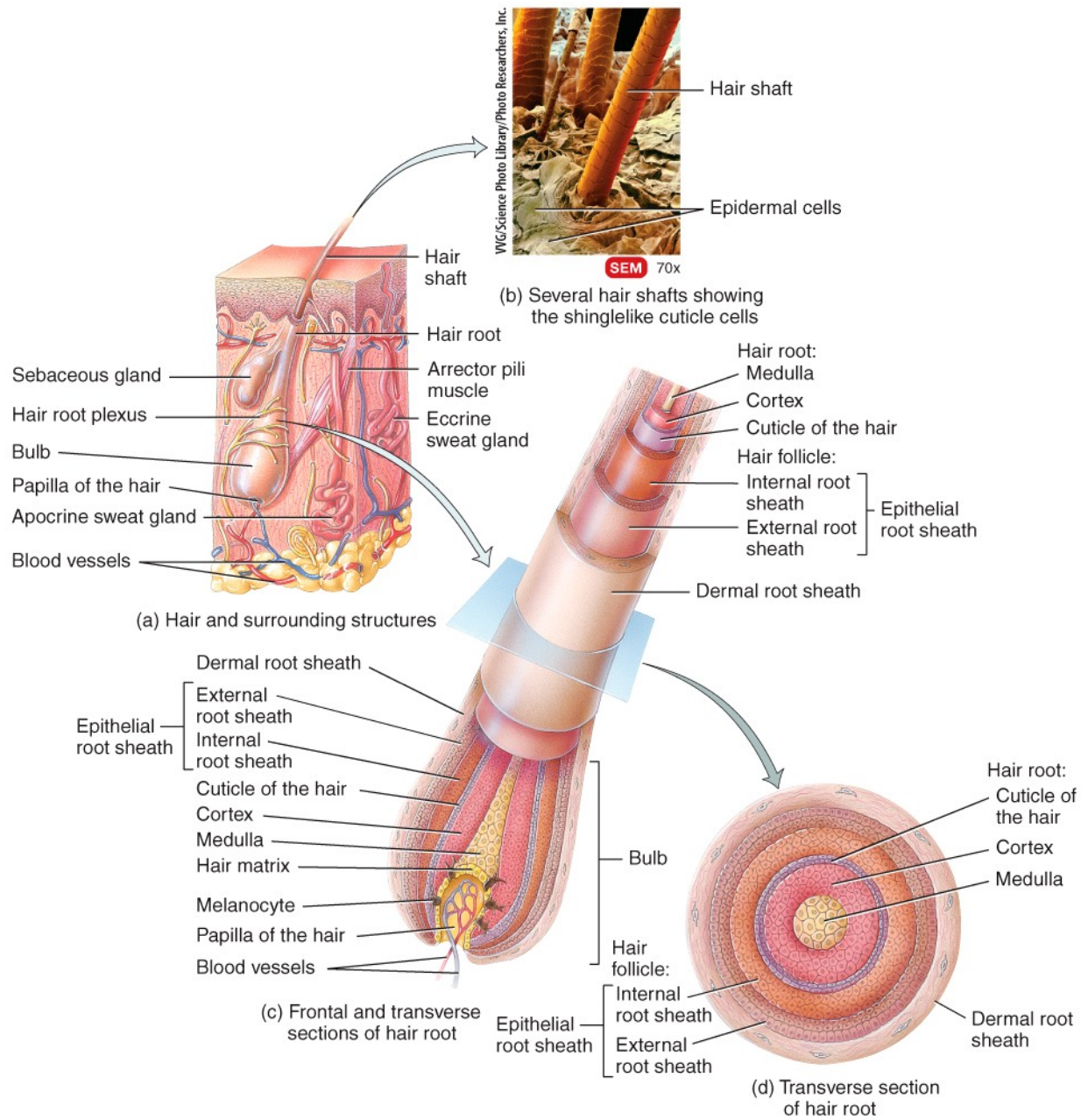
(c) Intraepidermal macrophage (Langerhans) cell

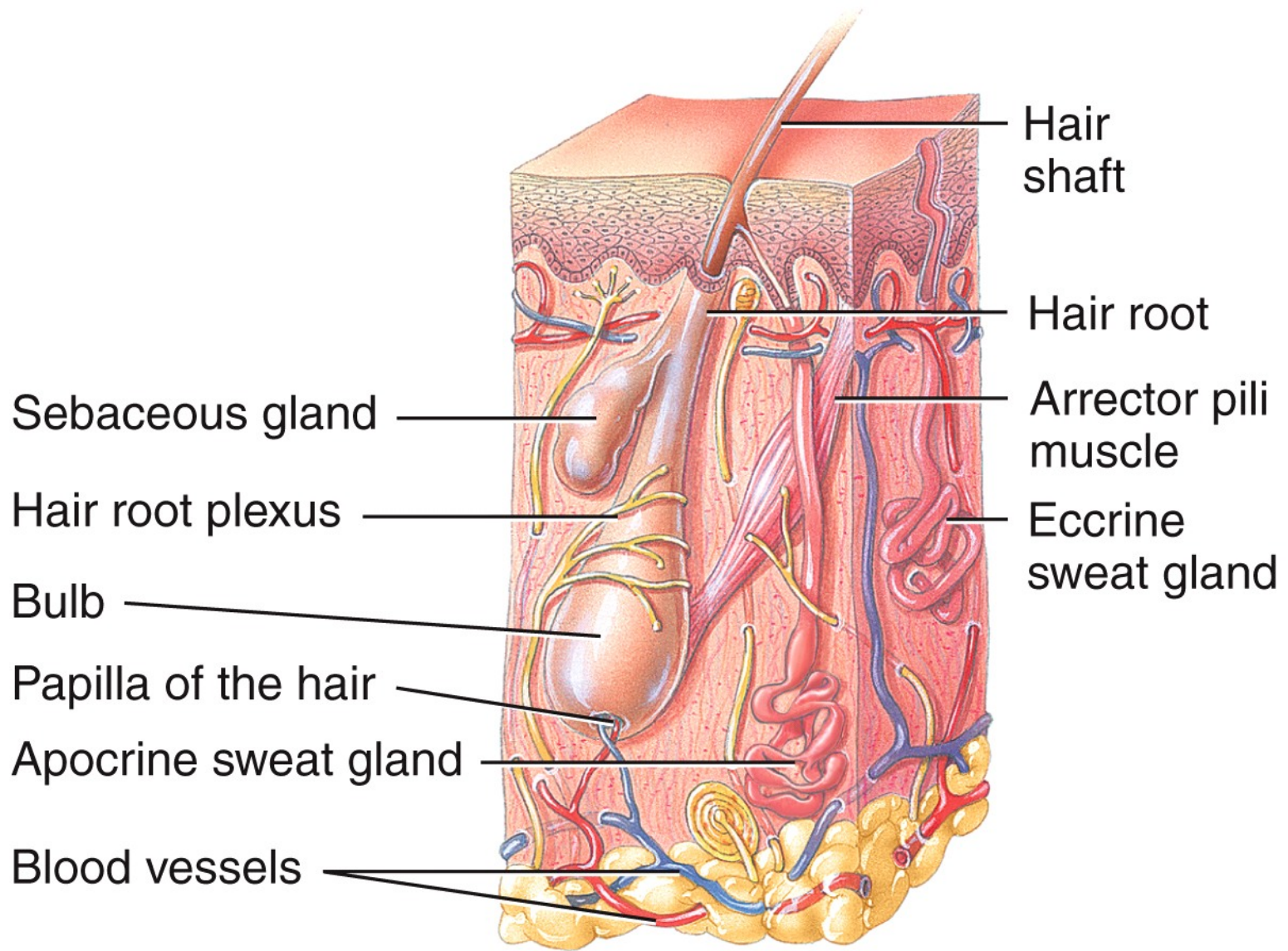


(d) Tactile epithelial (Merkel) cell



Location of four principal cell types in epidermis of thick skin





(a) Hair and surrounding structures



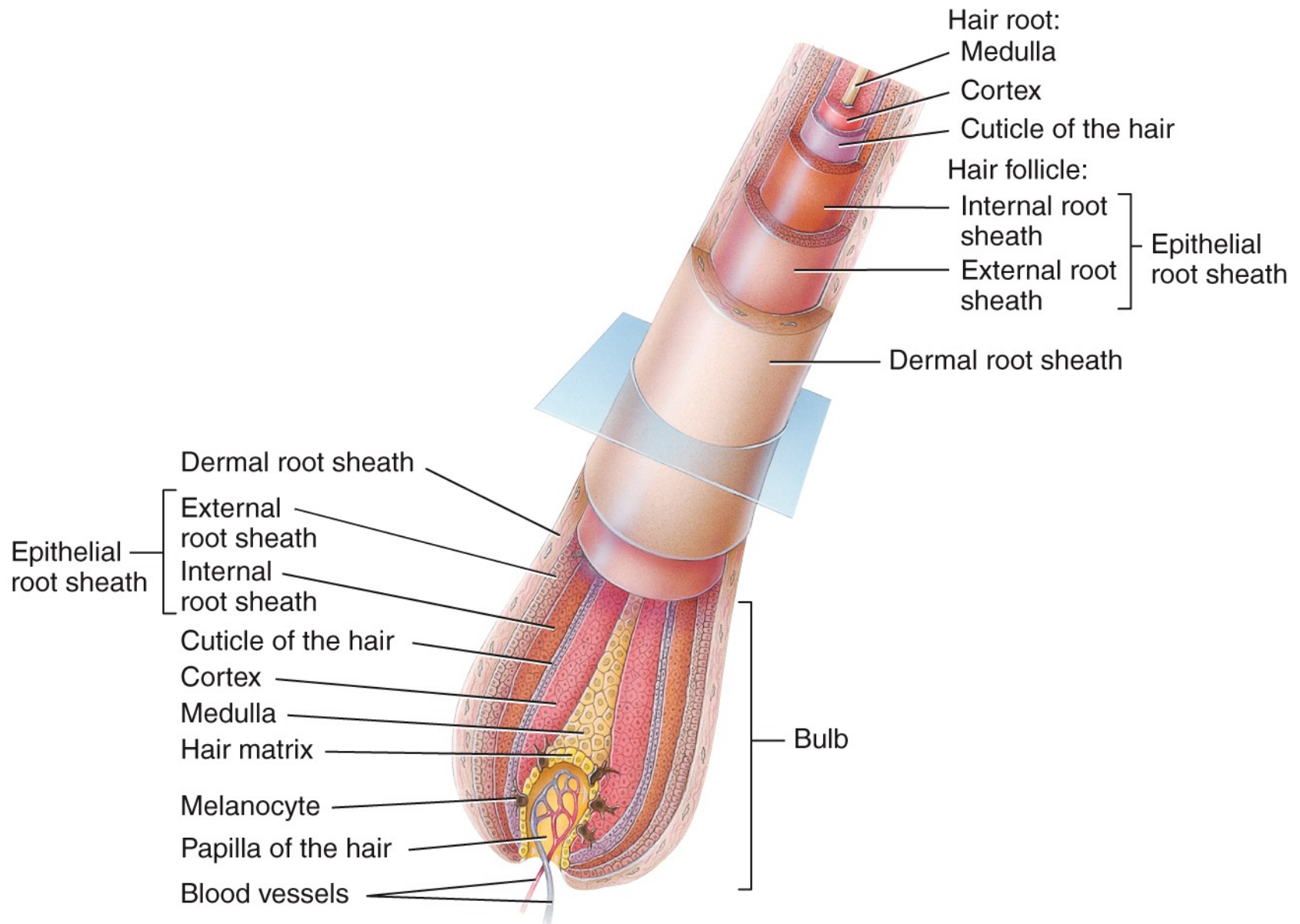
Hair shaft

Epidermal cells

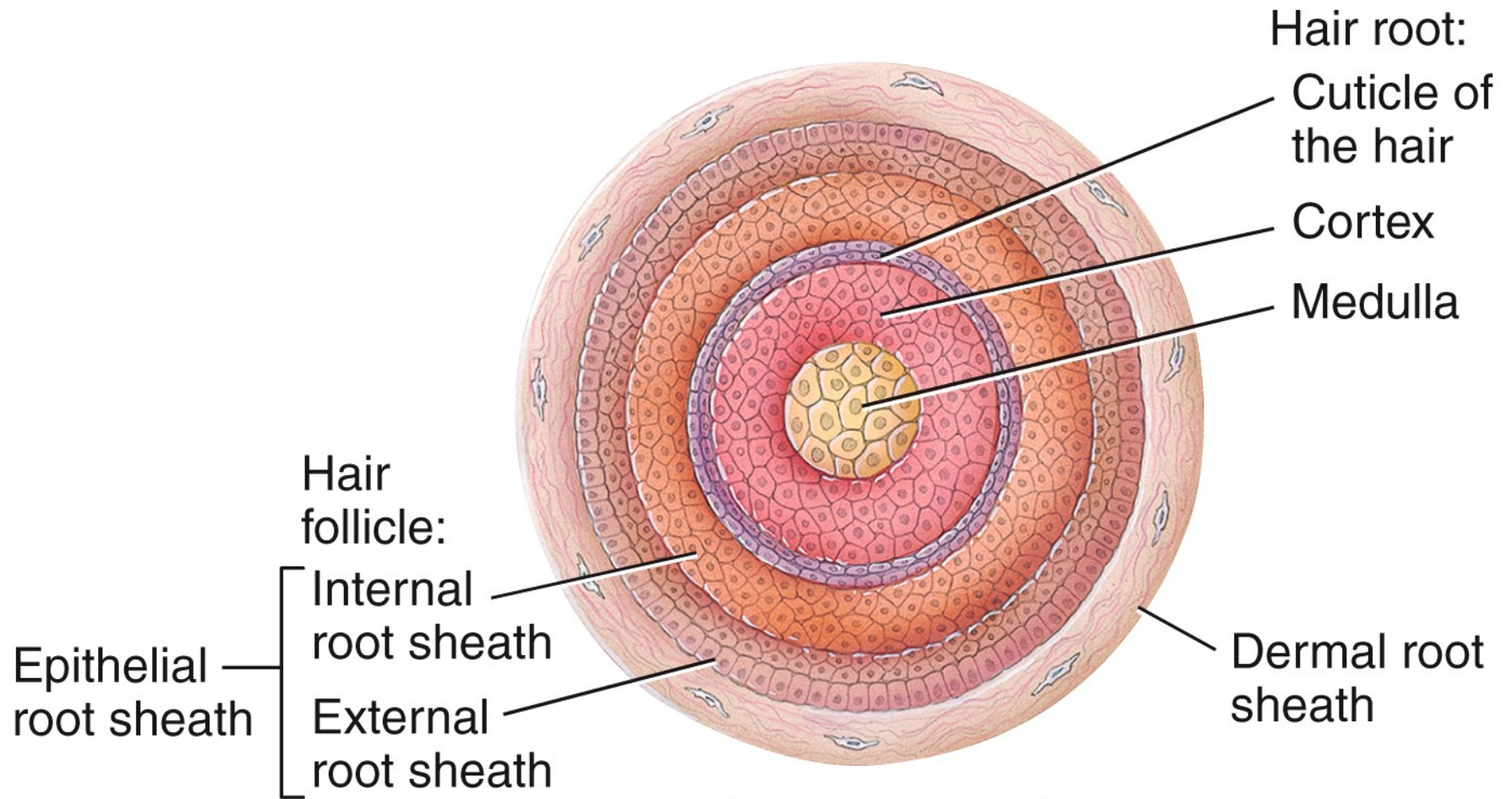
SEM

70x

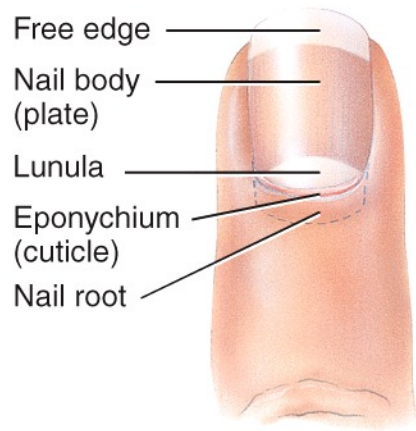
(b) Several hair shafts showing the shinglelike cuticle cells



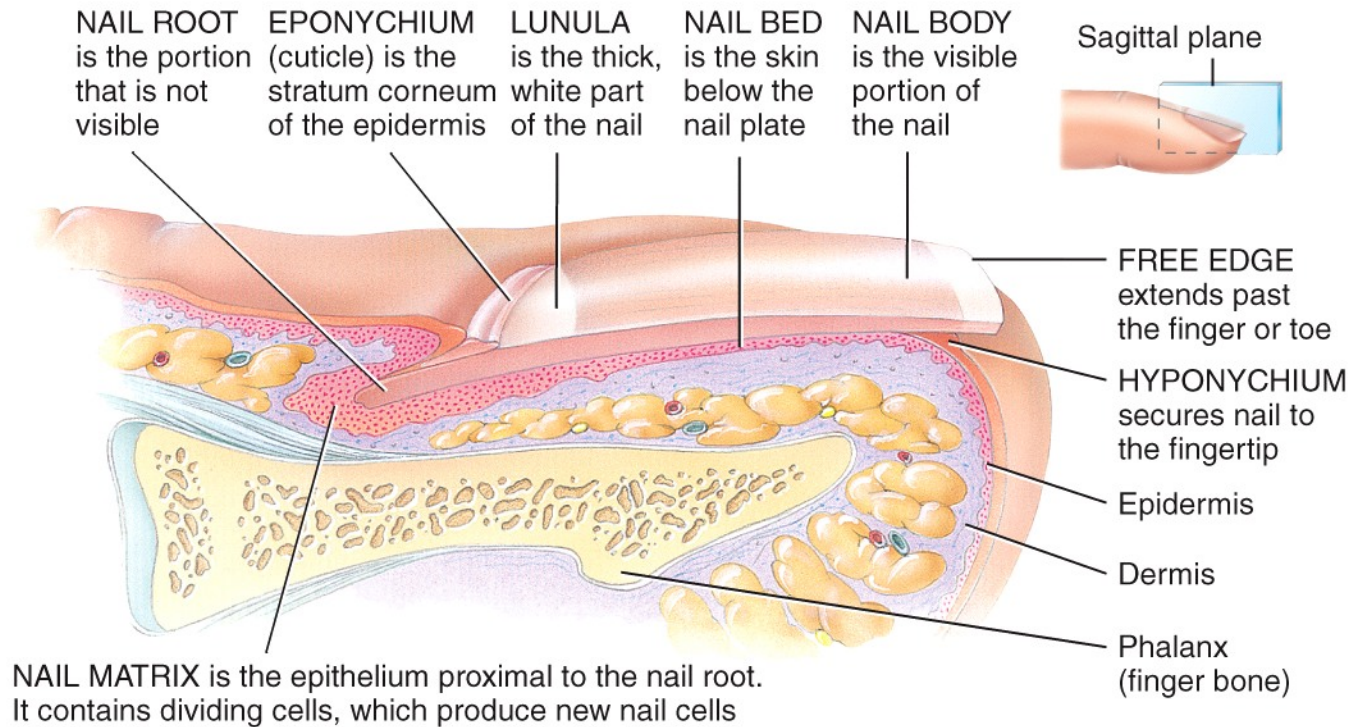
(c) Frontal and transverse sections of hair root



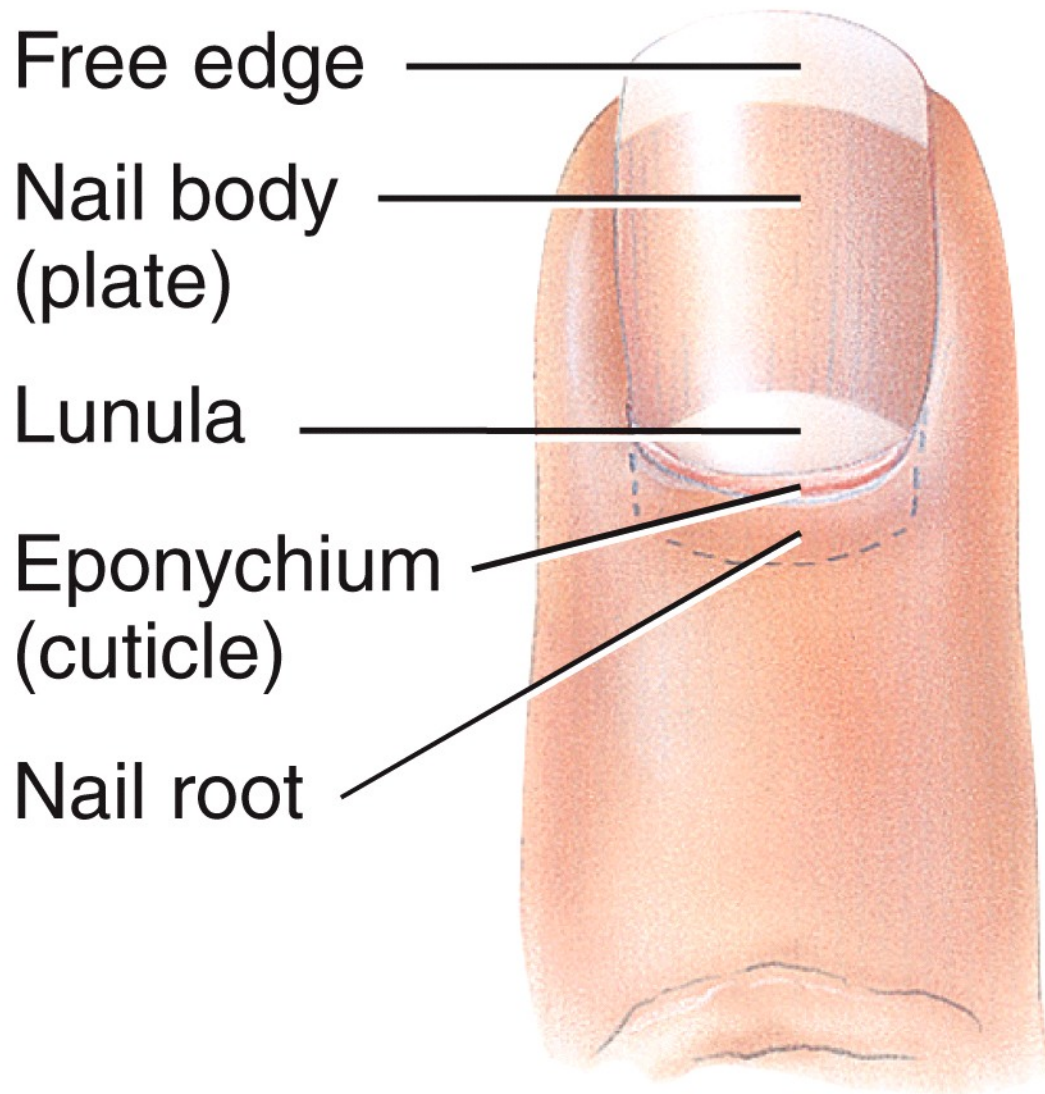
(d) Transverse section of hair root



(a) Dorsal view



(b) Sagittal section showing internal detail



Free edge

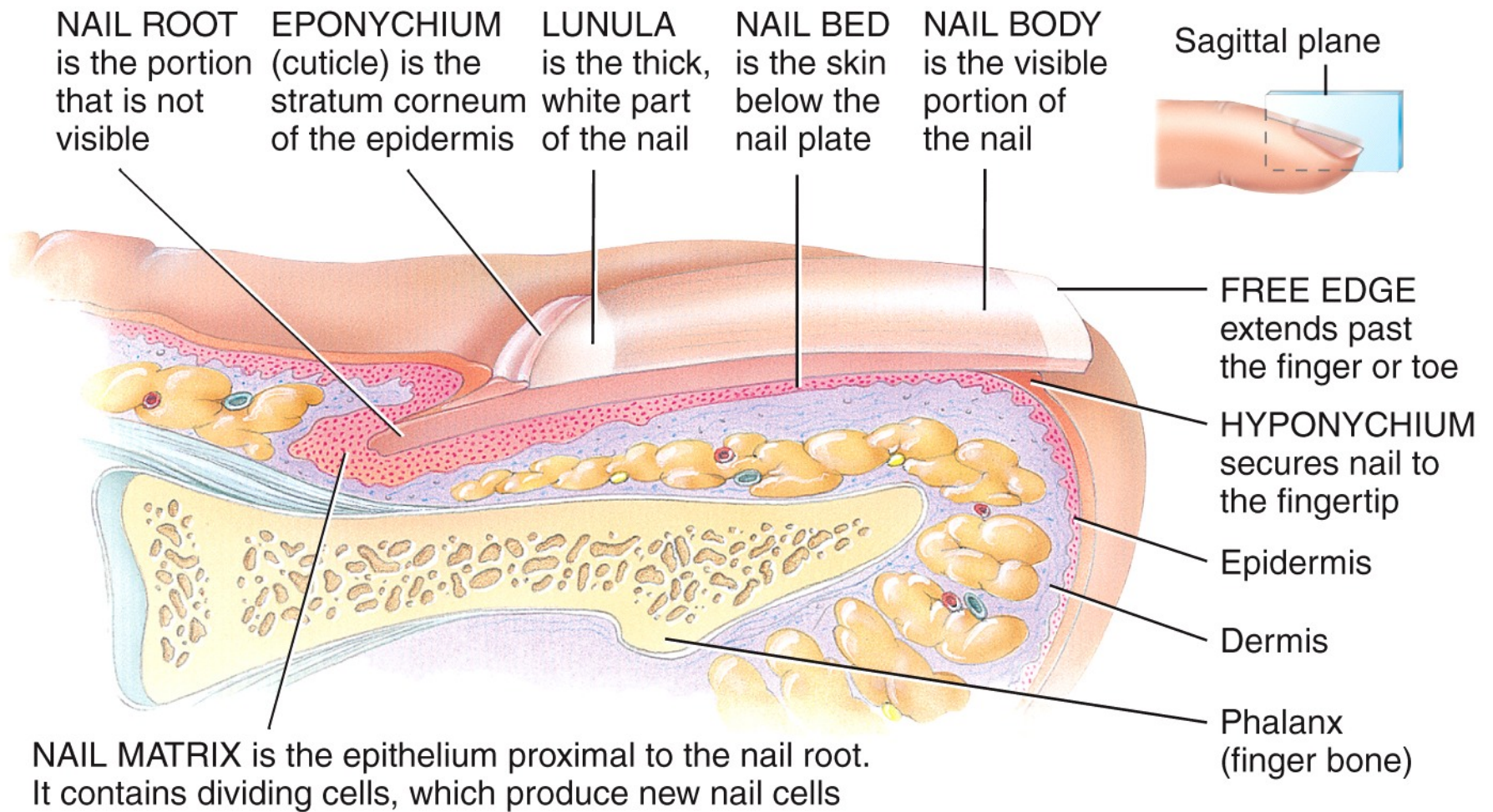
Nail body
(plate)

Lunula

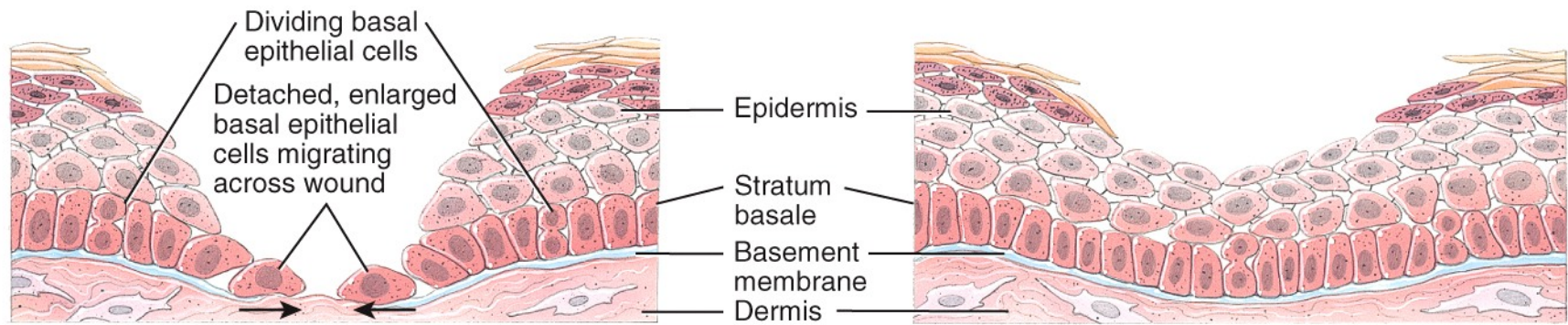
Eponychium
(cuticle)

Nail root

(a) Dorsal view



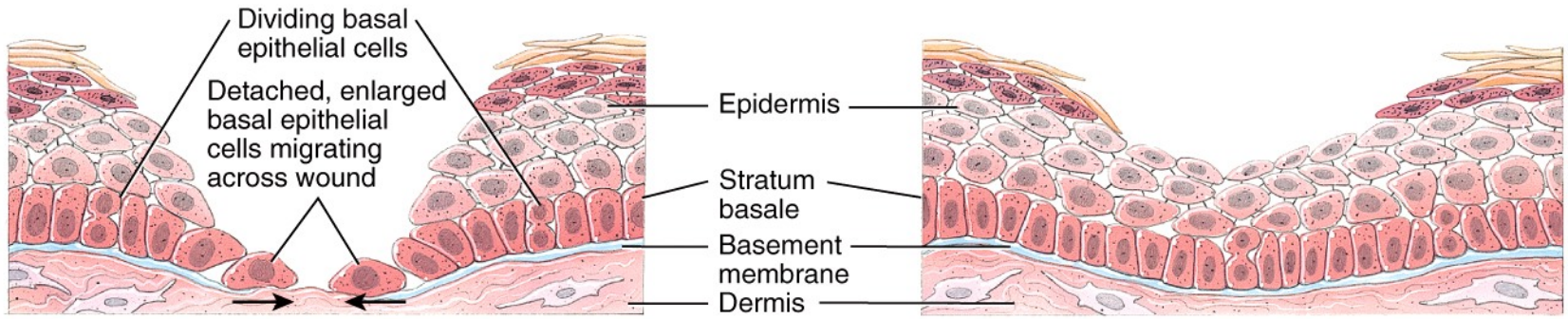
(b) Sagittal section showing internal detail



(a) Division of stratum basale cells and migration across wound

(b) Thickening of epidermis

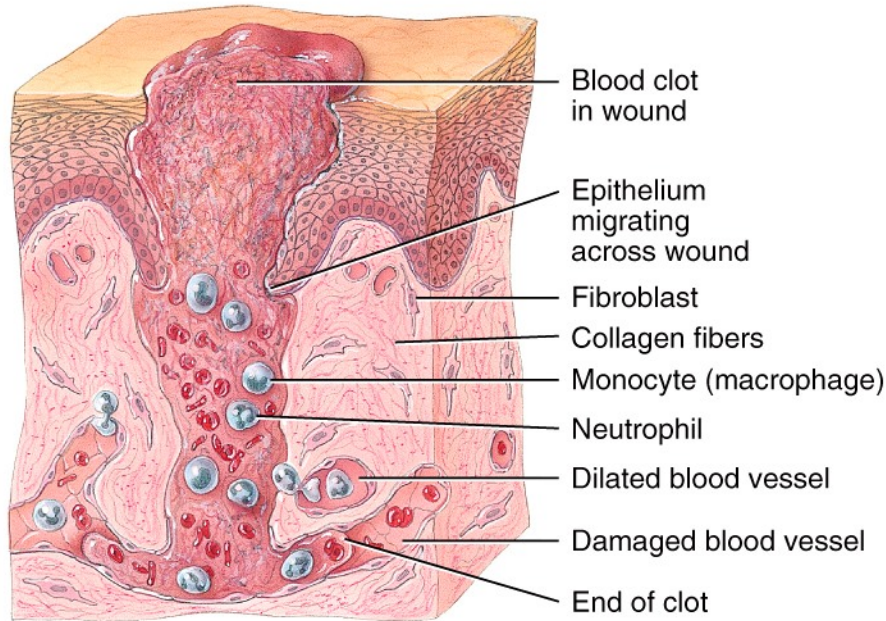
Epidermal wound healing



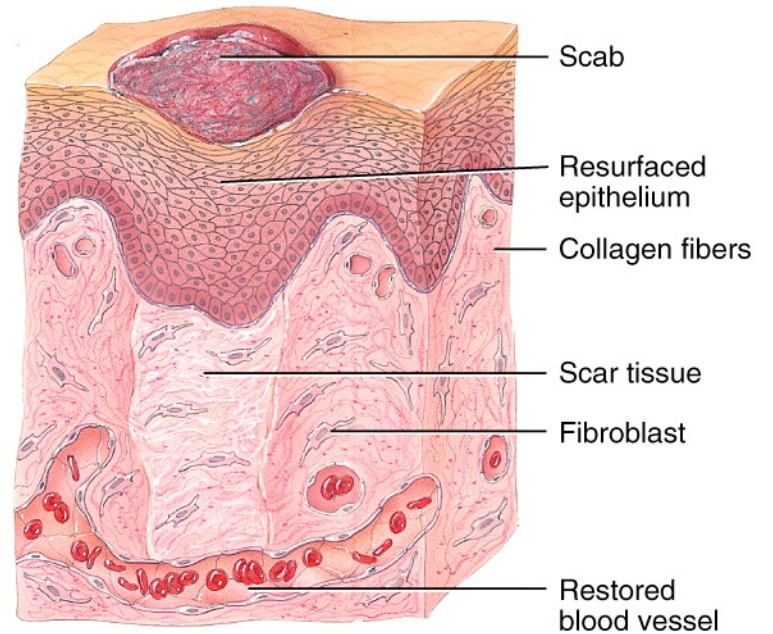
(a) Division of stratum basale cells and migration across wound

(b) Thickening of epidermis

Epidermal wound healing

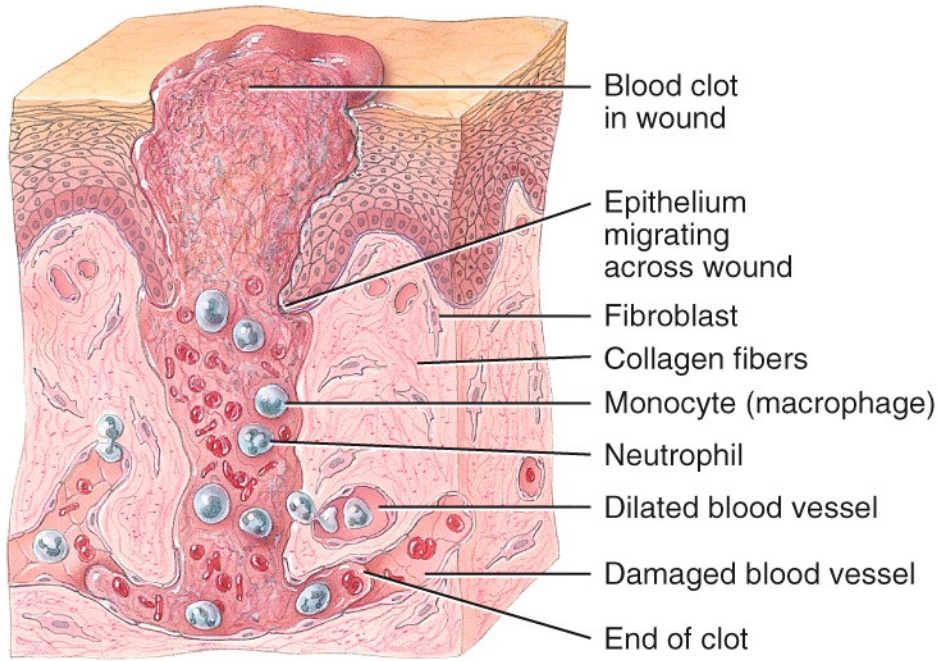


(c) Inflammatory phase

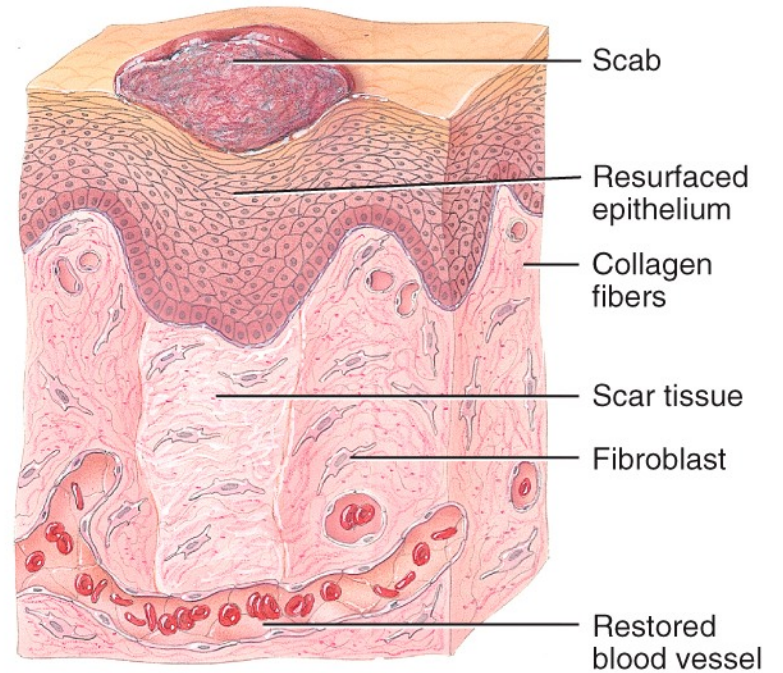


(d) Maturation phase

Deep wound healing

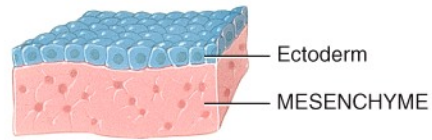


(c) Inflammatory phase

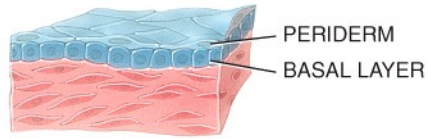


(d) Maturation phase

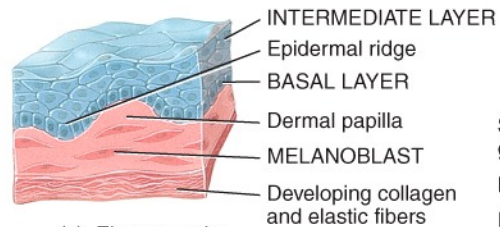
Deep wound healing



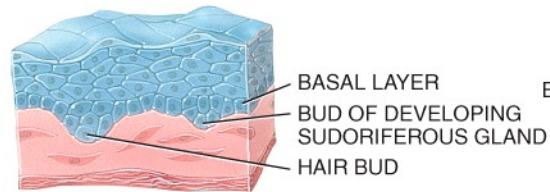
(a) Fourth week



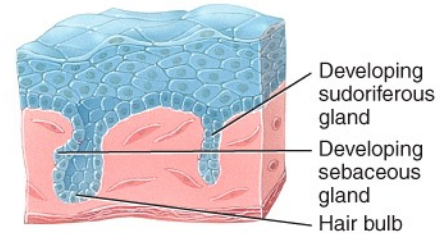
(b) Seventh week



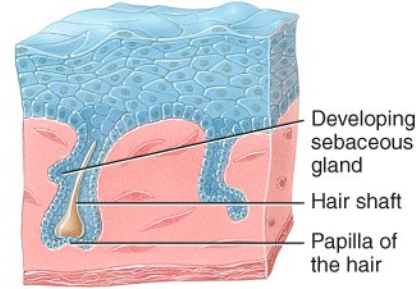
(c) Eleven weeks



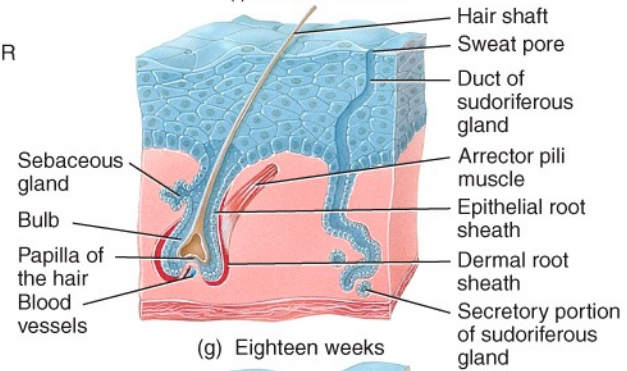
(d) Twelve weeks



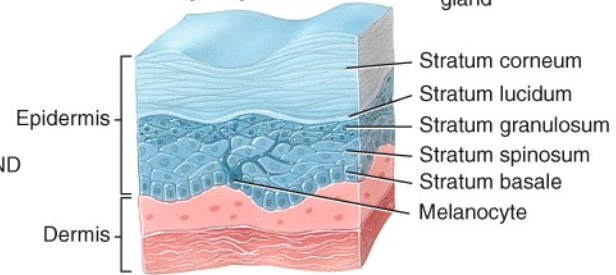
(e) Fourteen weeks



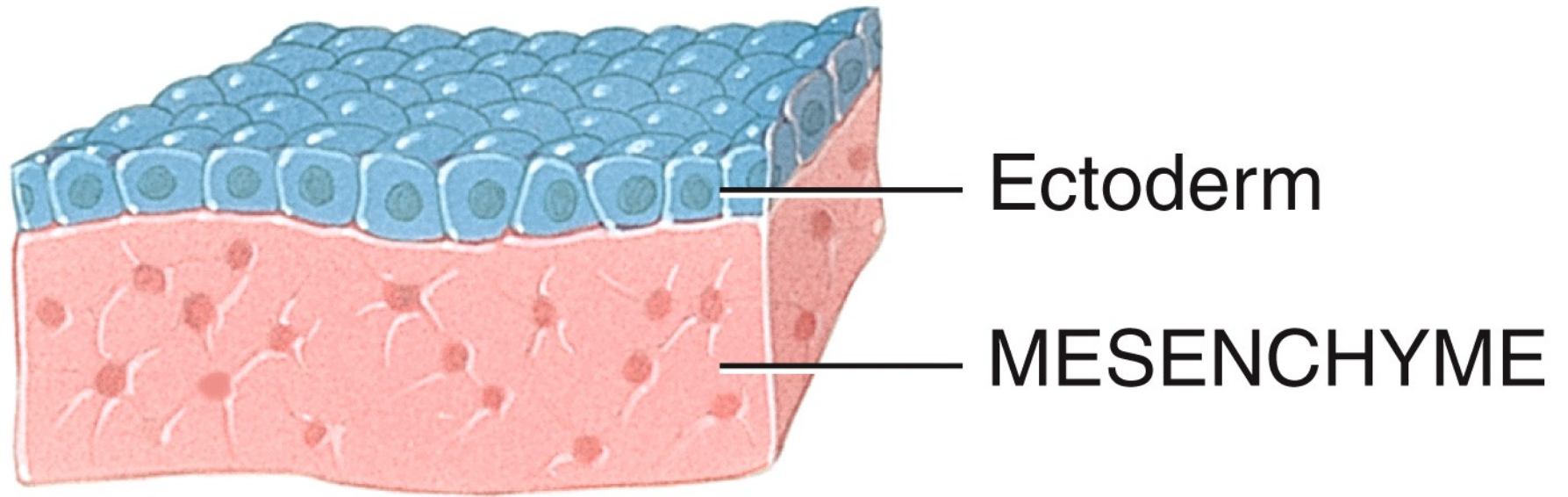
(f) Sixteen weeks



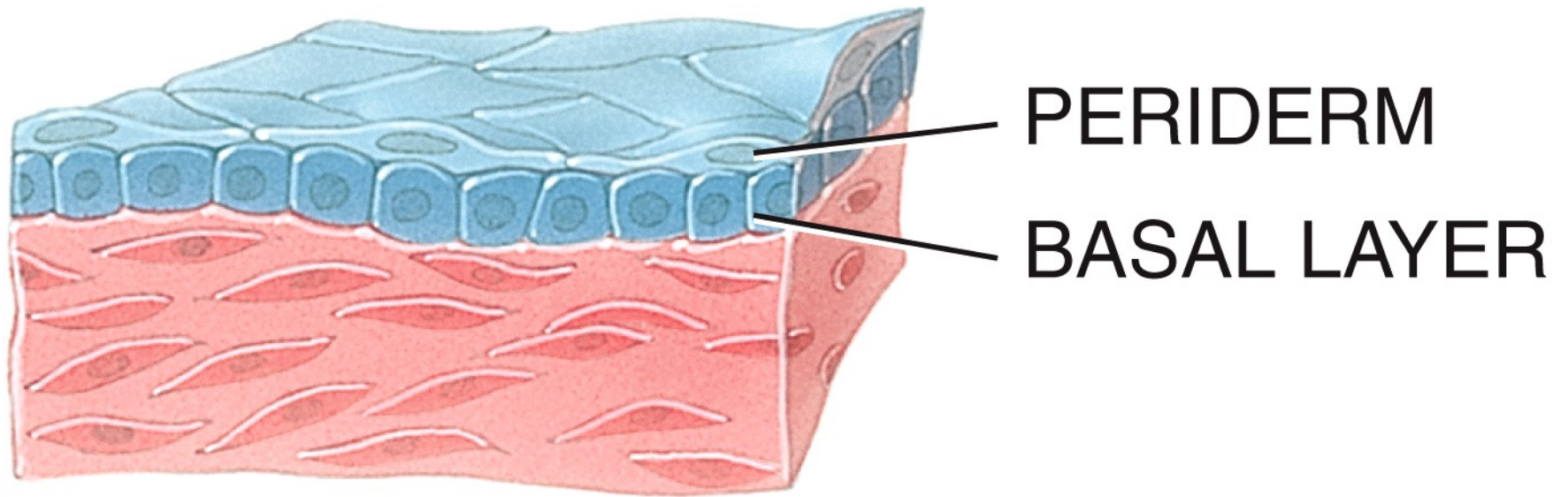
(g) Eighteen weeks



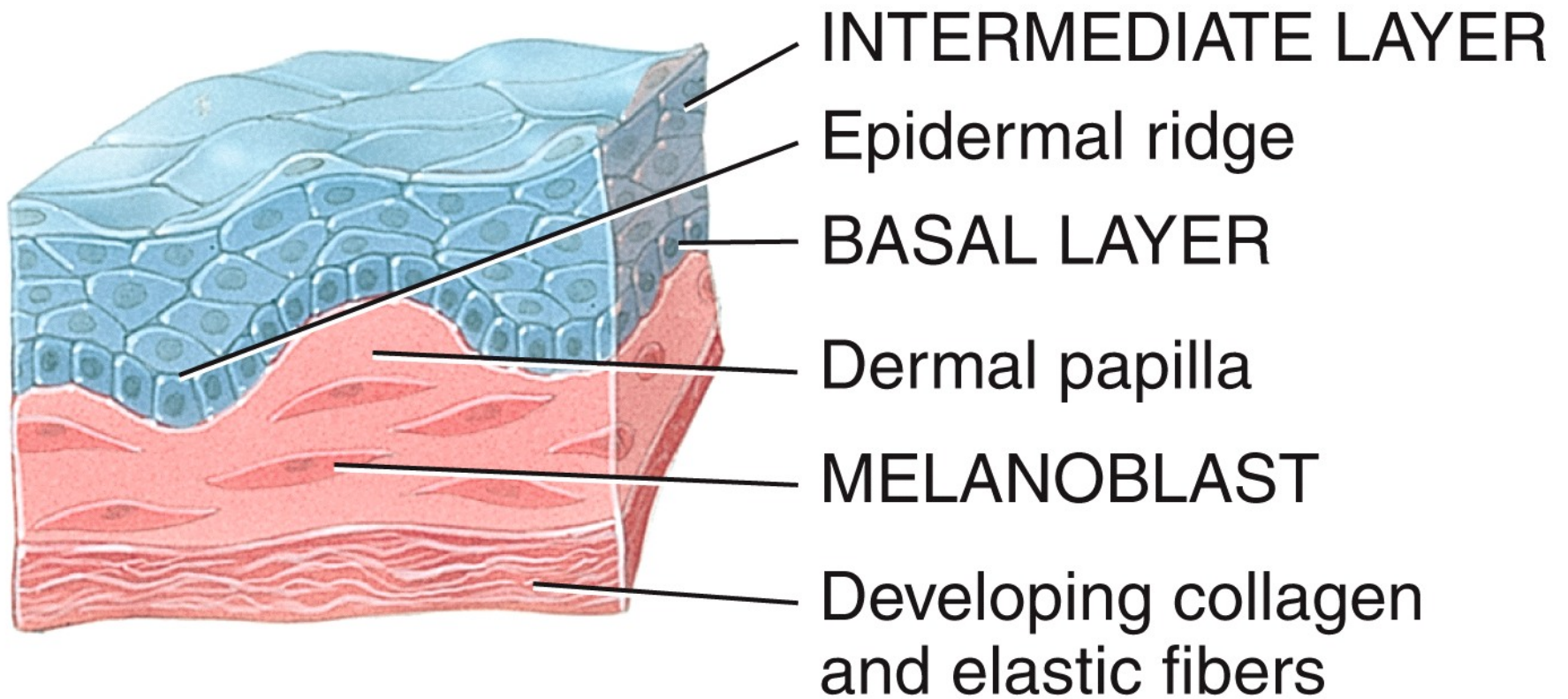
(h) At birth



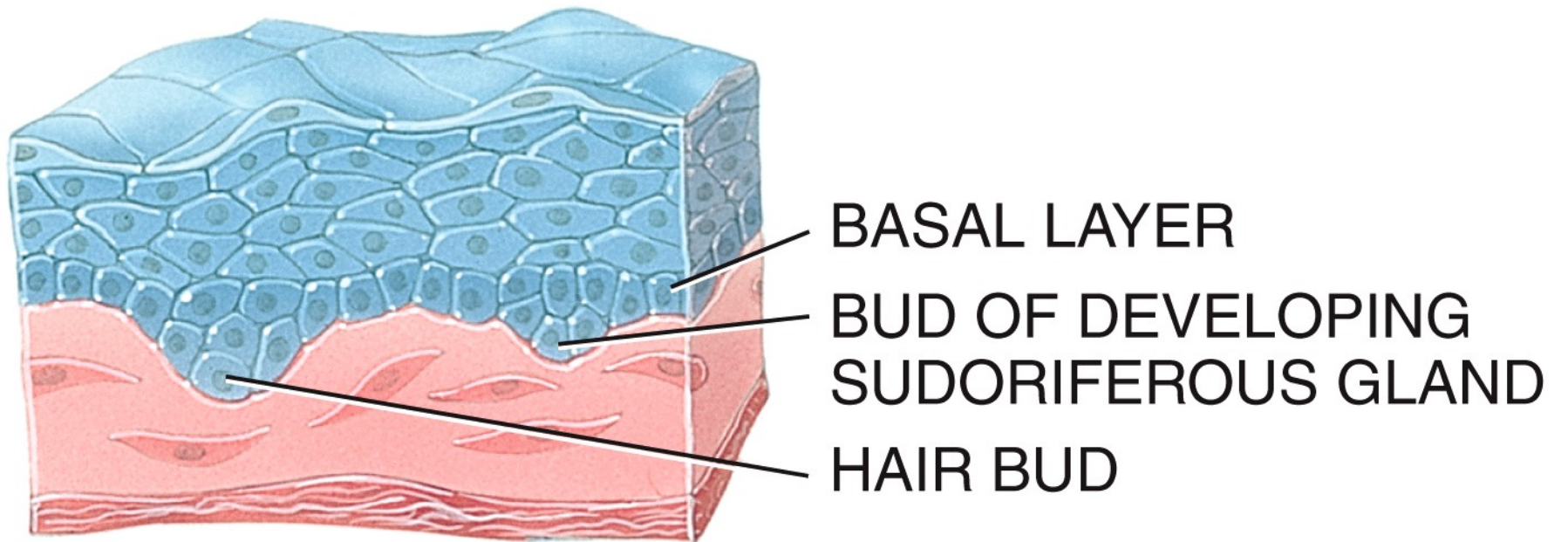
(a) Fourth week



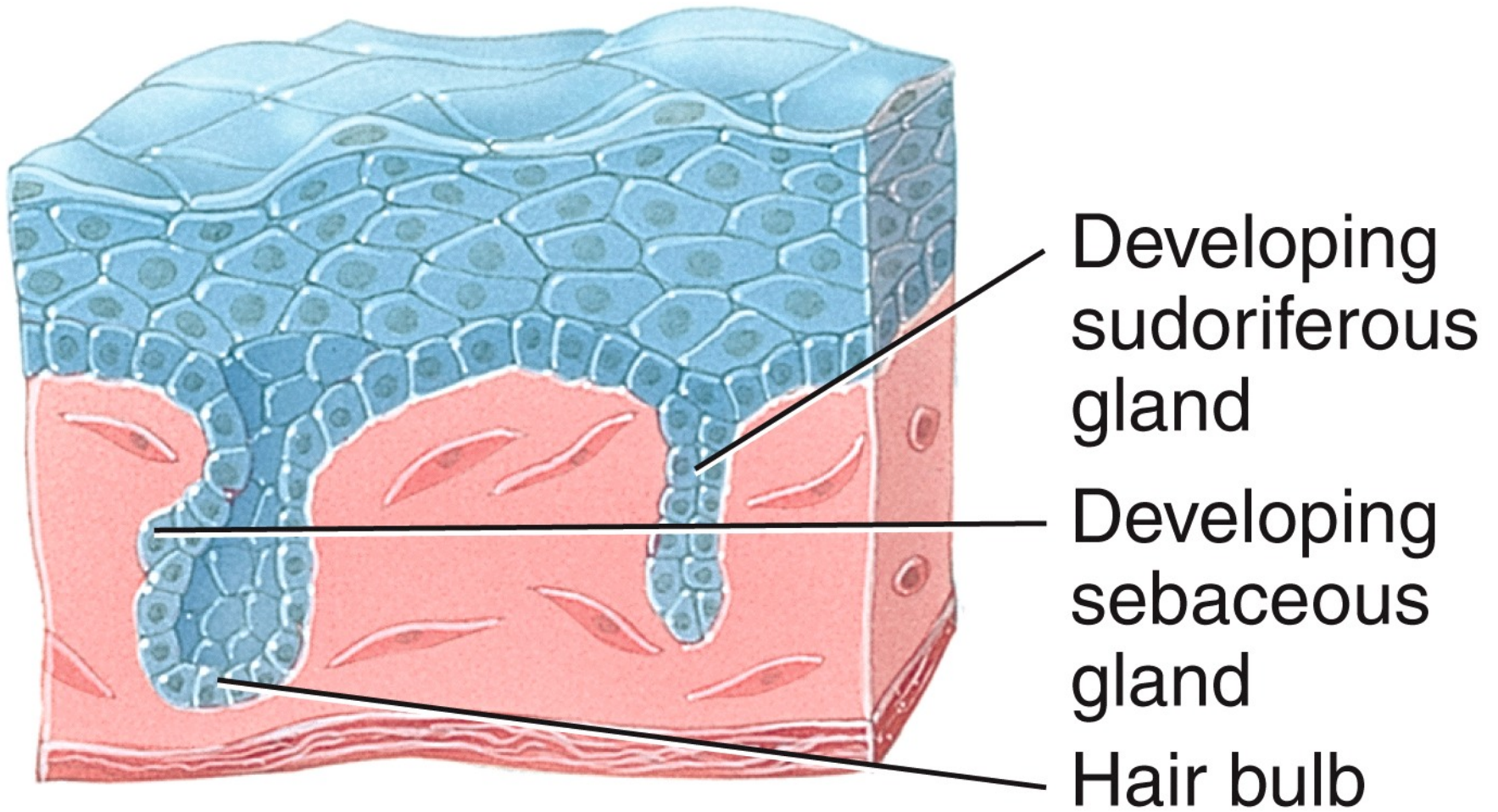
(b) Seventh week



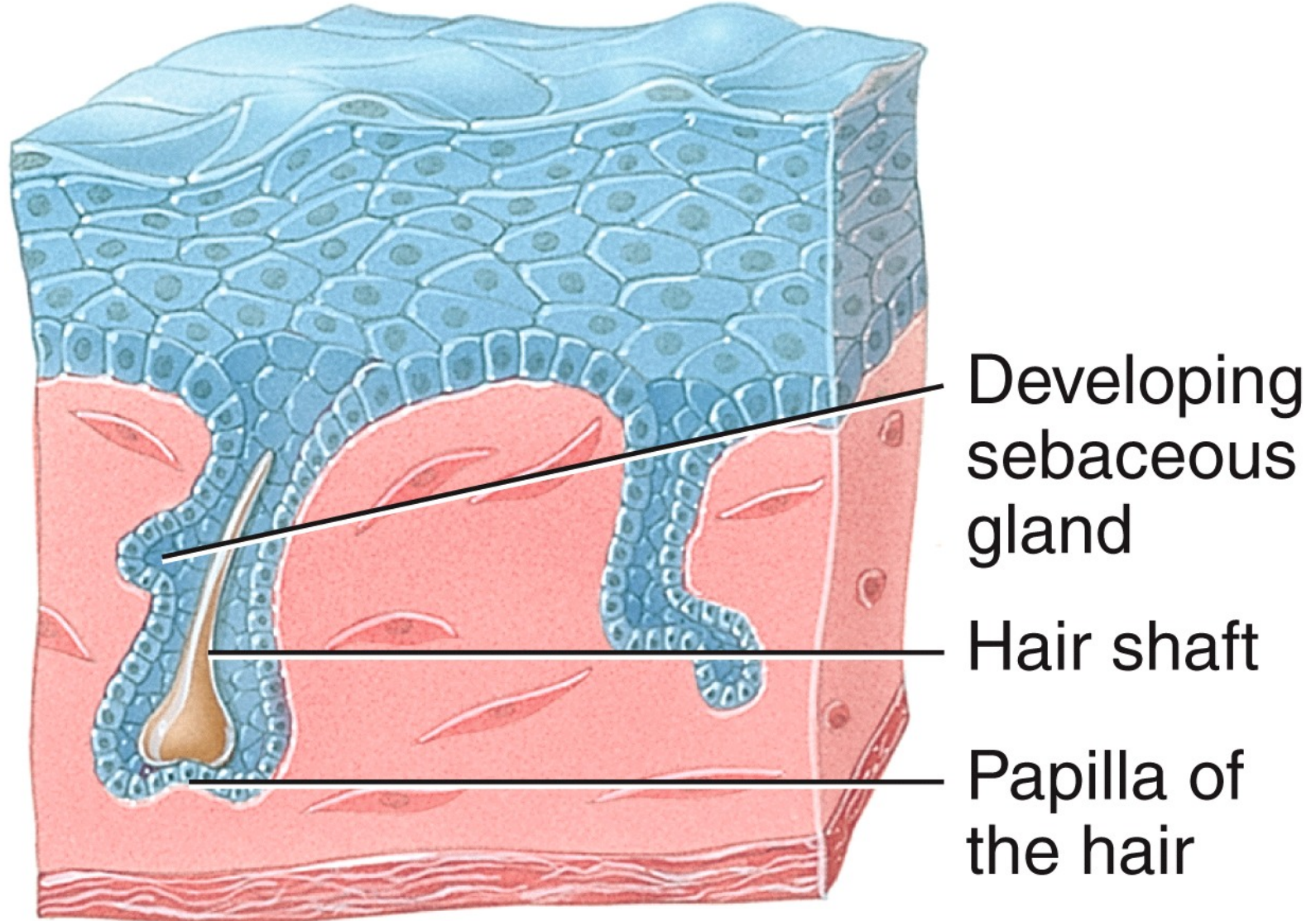
(c) Eleven weeks



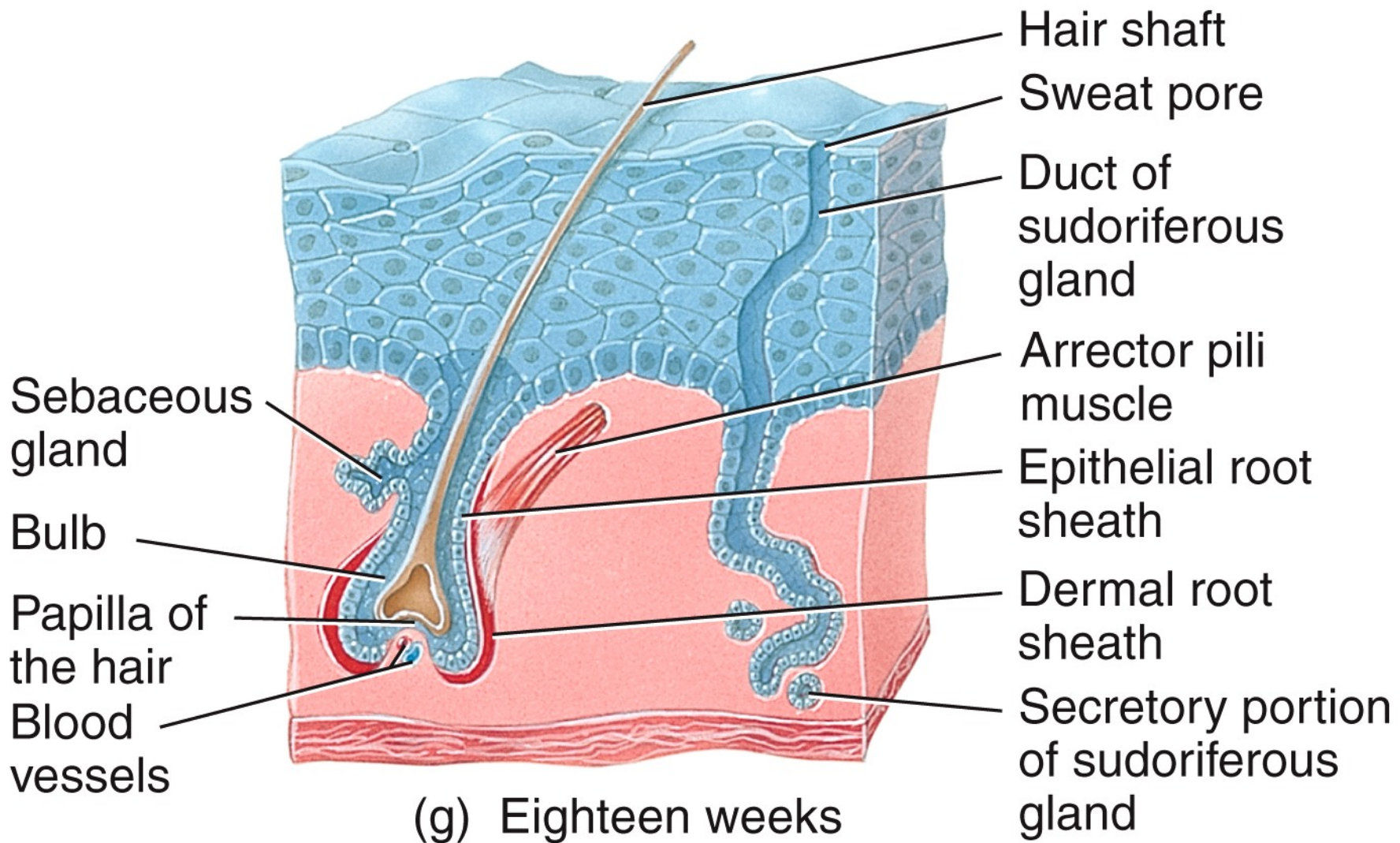
(d) Twelve weeks

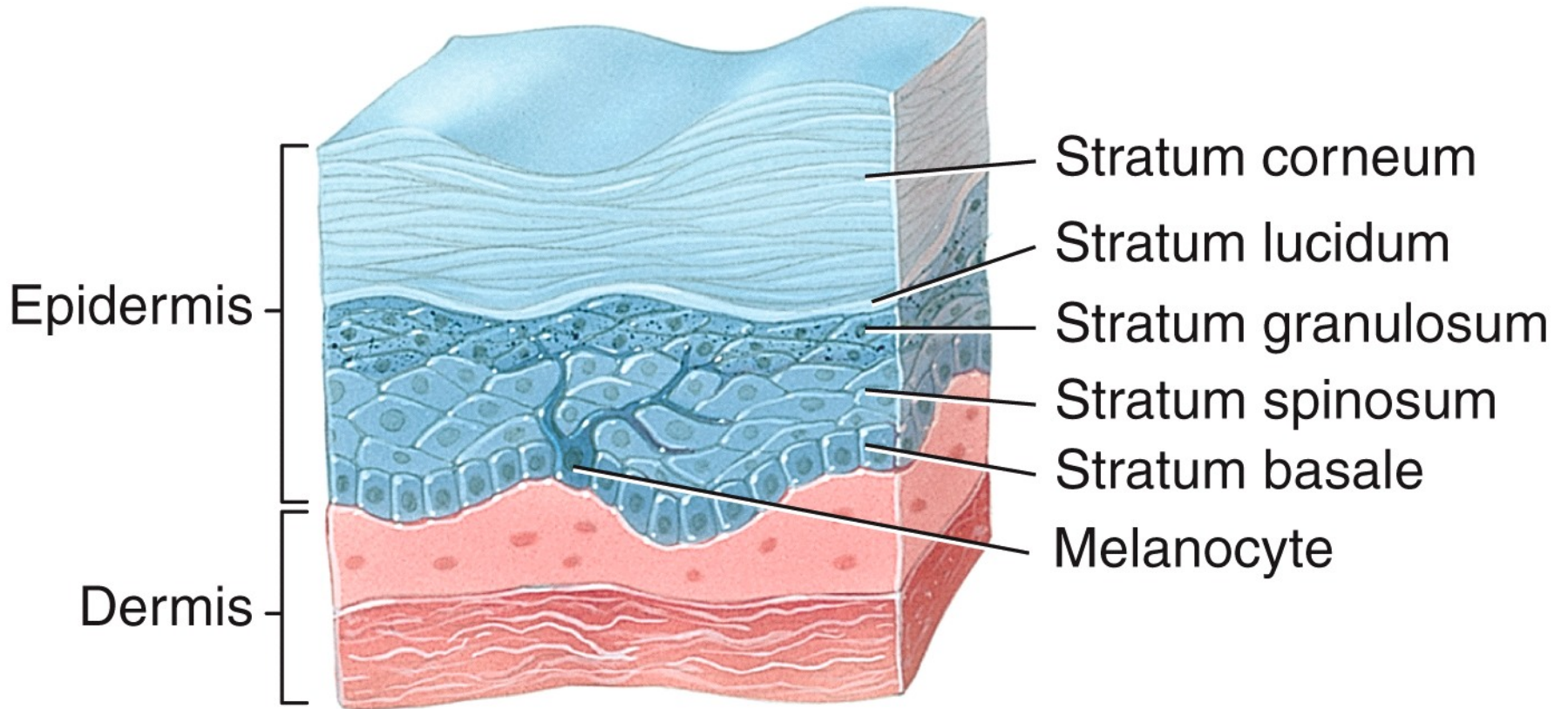


(e) Fourteen weeks



(f) Sixteen weeks





(h) At birth

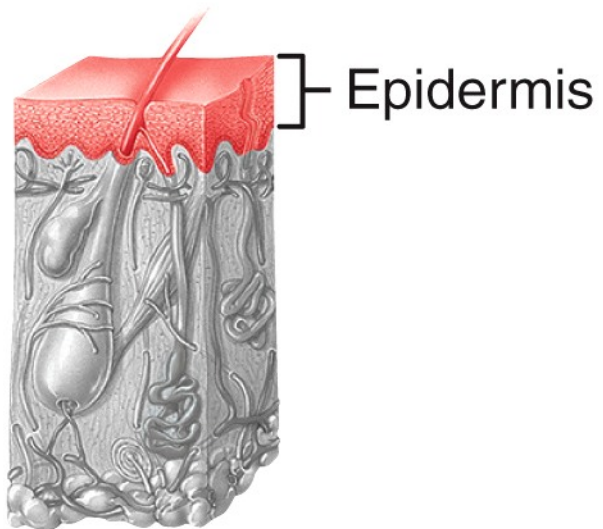


(a) Normal nevus (mole)



(b) Malignant melanoma

Sheila Terry/Science Photo Library/
Photo Researchers, Inc.



(a) First-degree burn
(sunburn)

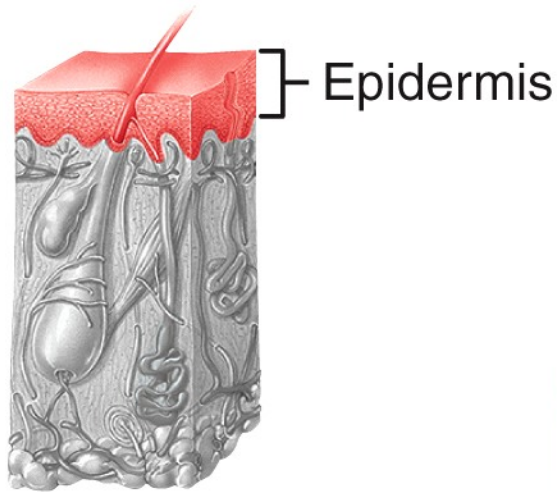
Sheila Terry/Science Photo Library/
Photo Researchers, Inc.



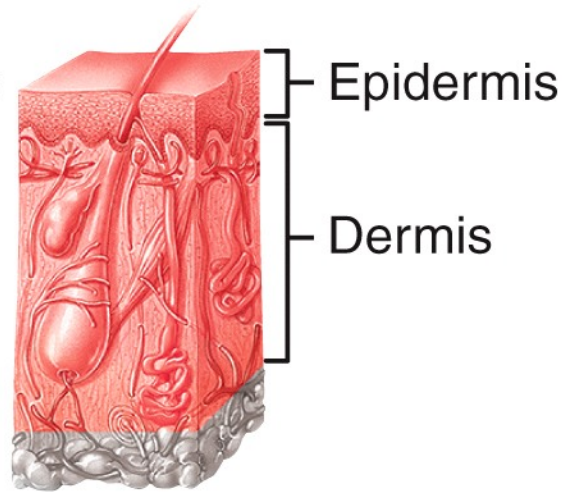
St. Stephen's Hospital/Science Photo
Library/Photo Researchers, Inc.



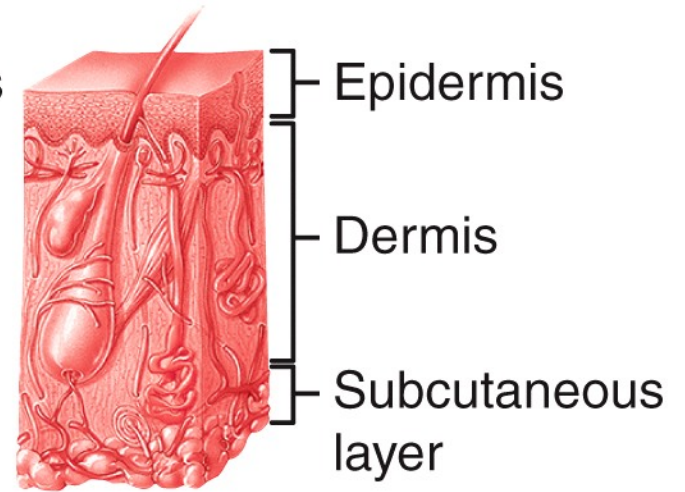
St. Stephen's Hospital/Science Photo
Library/Photo Researchers, Inc.



(a) First-degree burn
(sunburn)

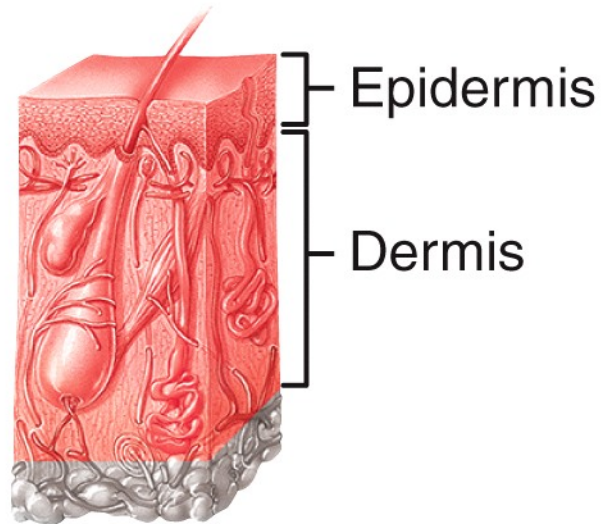


(b) Second-degree burn
(note the blisters in
the photograph)



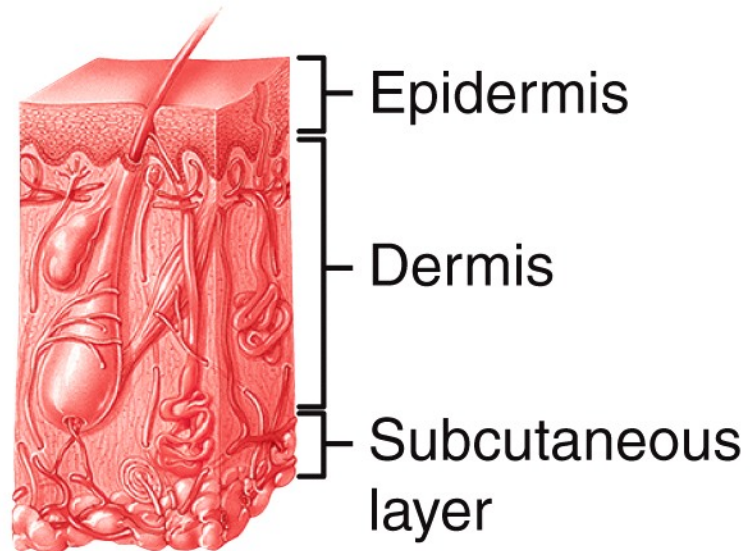
(c) Third-degree burn

St. Stephen's Hospital/Science Photo
Library/Photo Researchers, Inc.

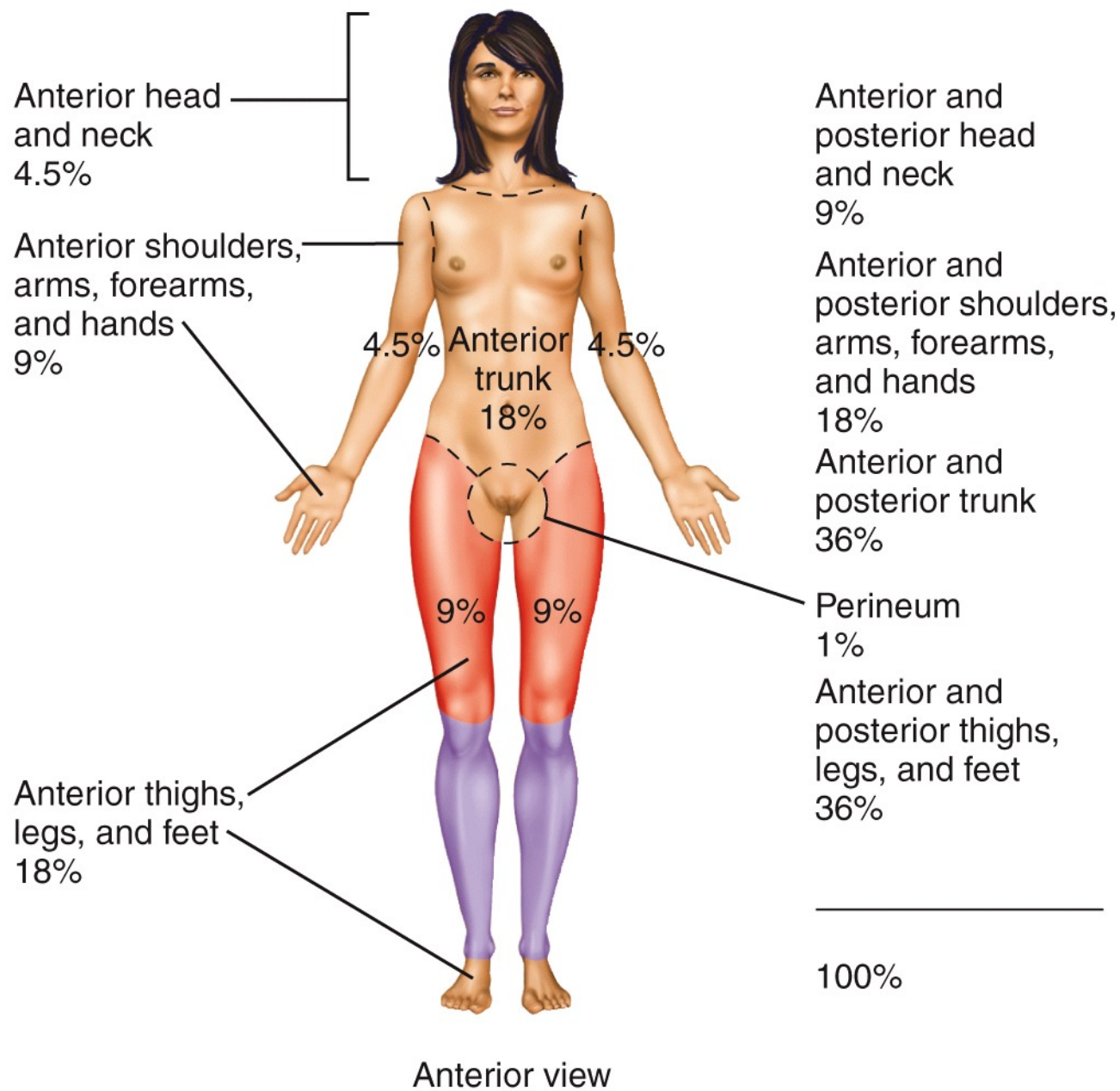


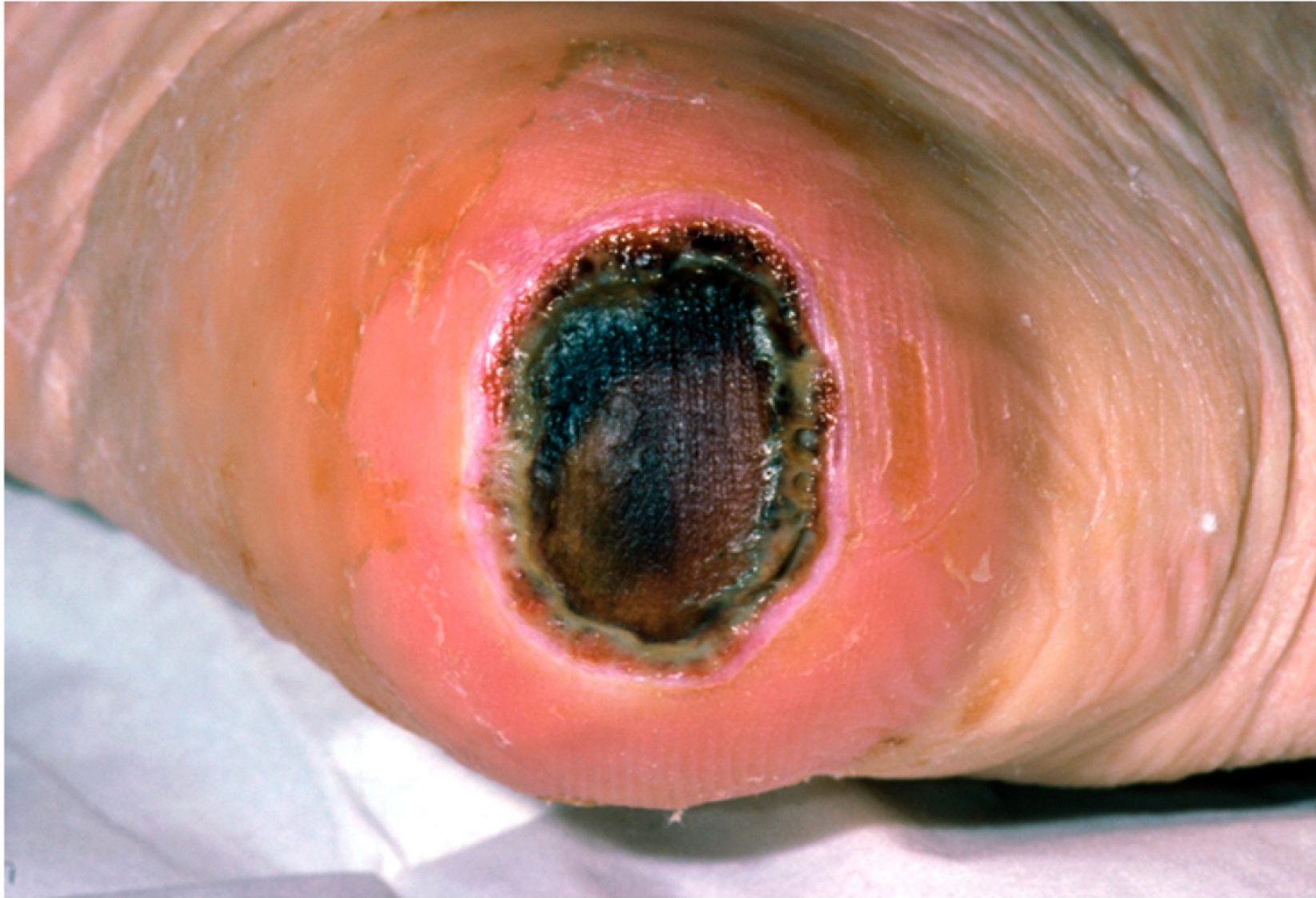
(b) Second-degree burn (note the blisters in the photograph)

St. Stephen's Hospital/Science Photo
Library/Photo Researchers, Inc.



(c) Third-degree burn





Dr. P. Marazzi/Science Photo Library/Photo Researchers, Inc.

Pressure ulcer on heel



Alberto E. Rodriguez/ Getty Images