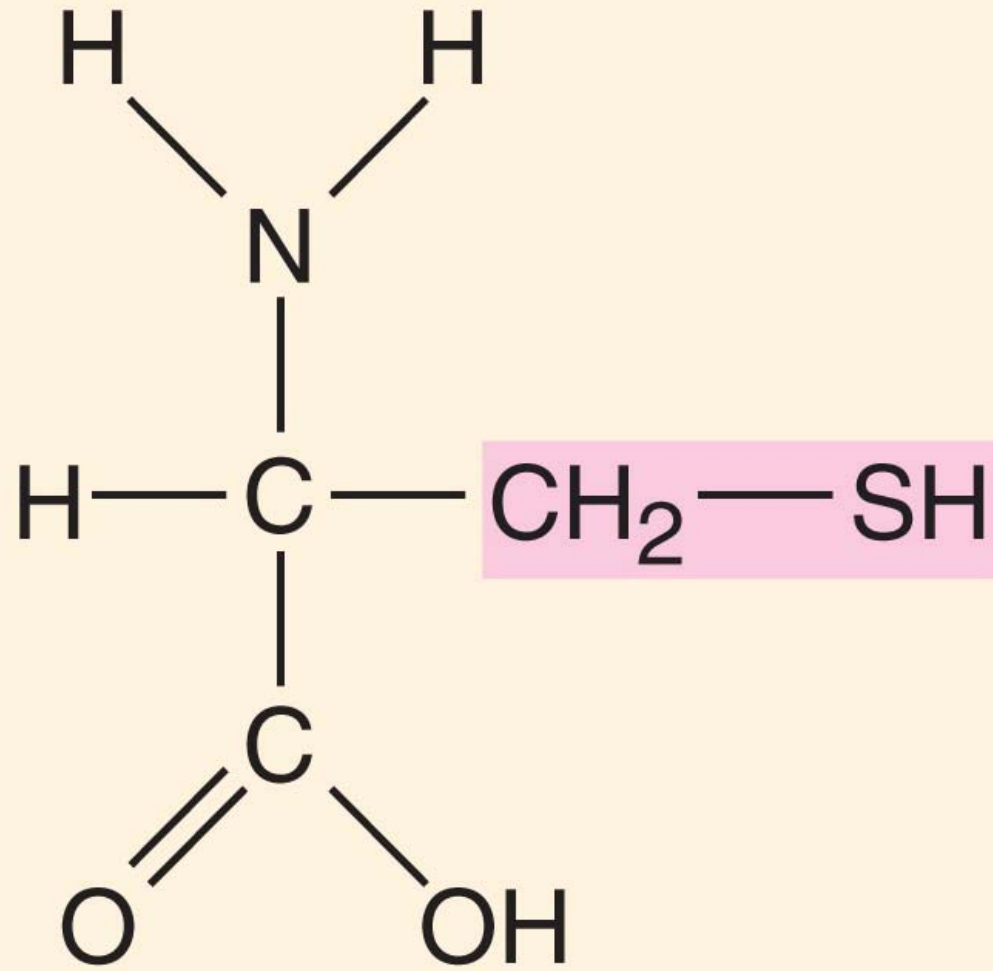
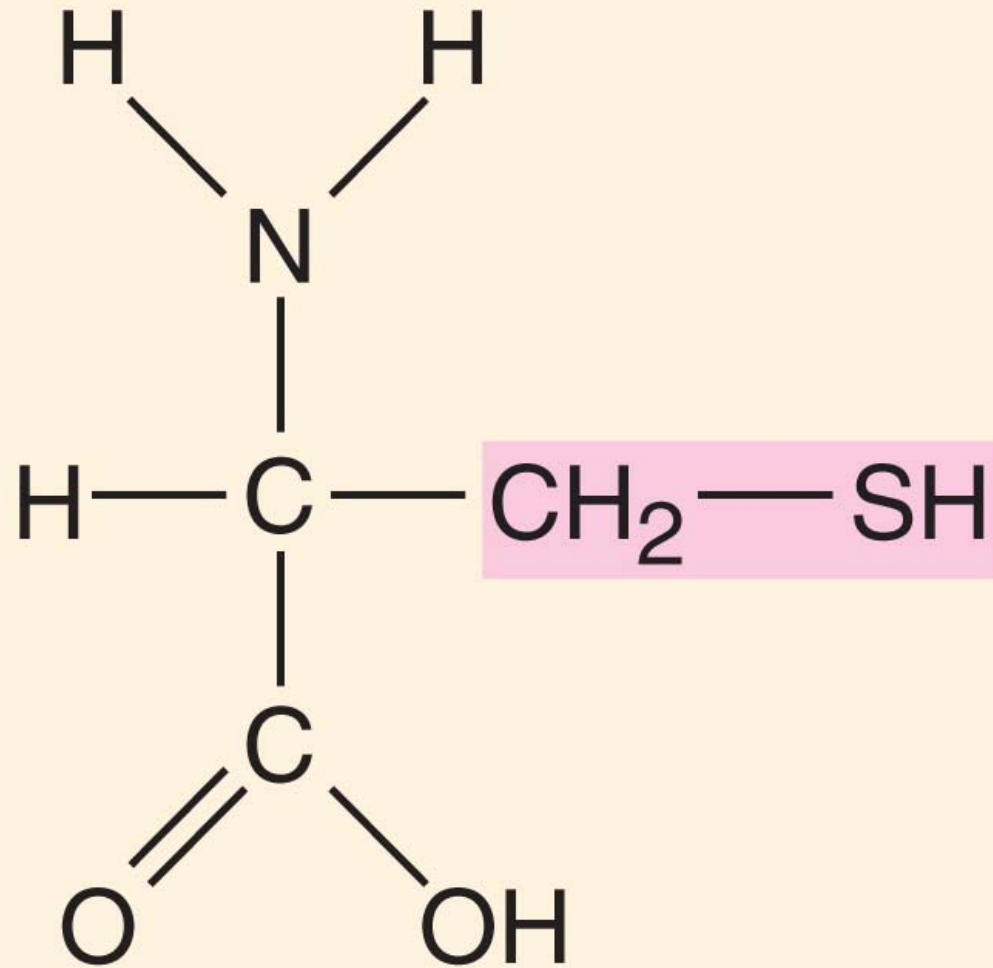
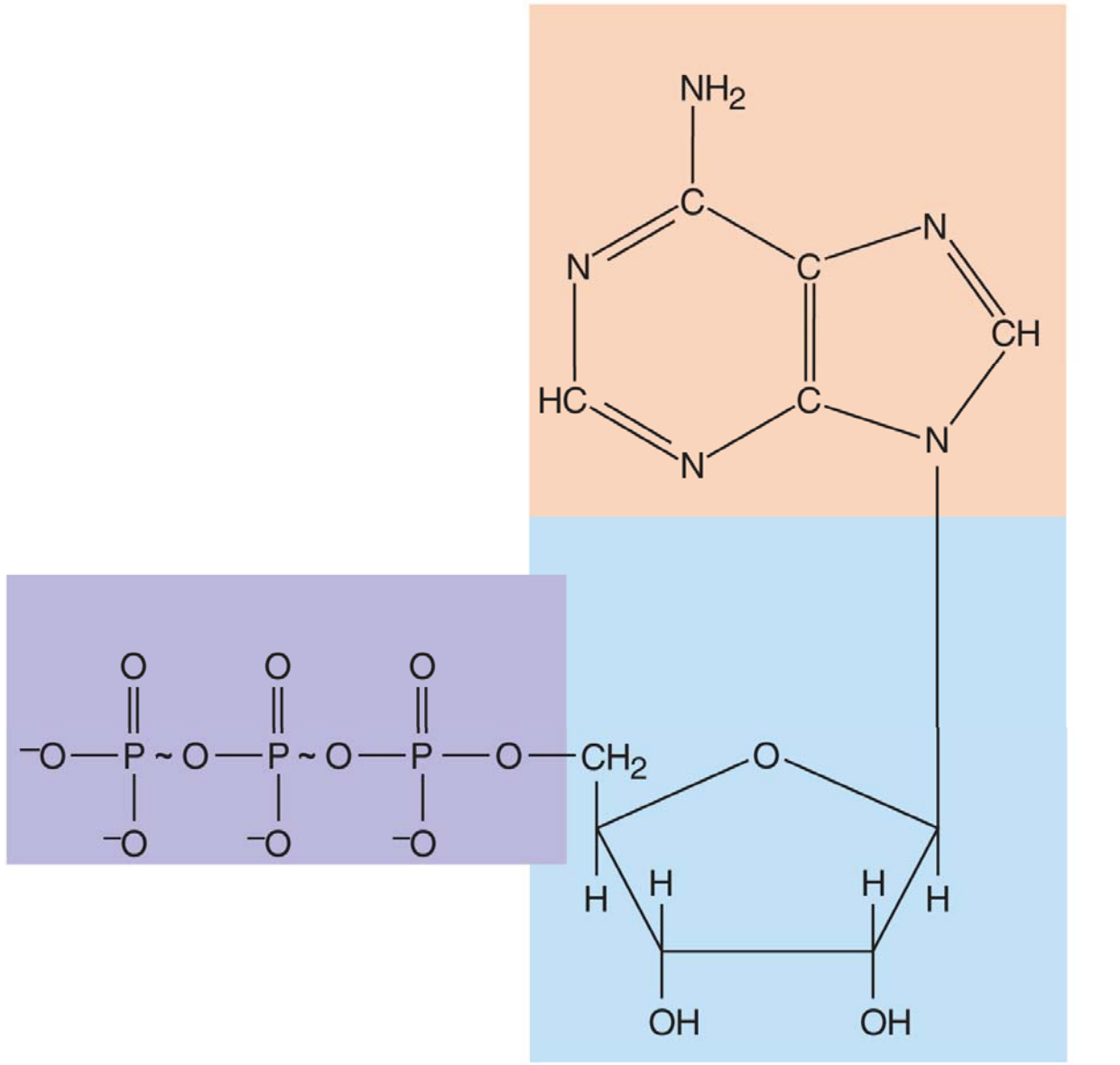


Know Your Molecules

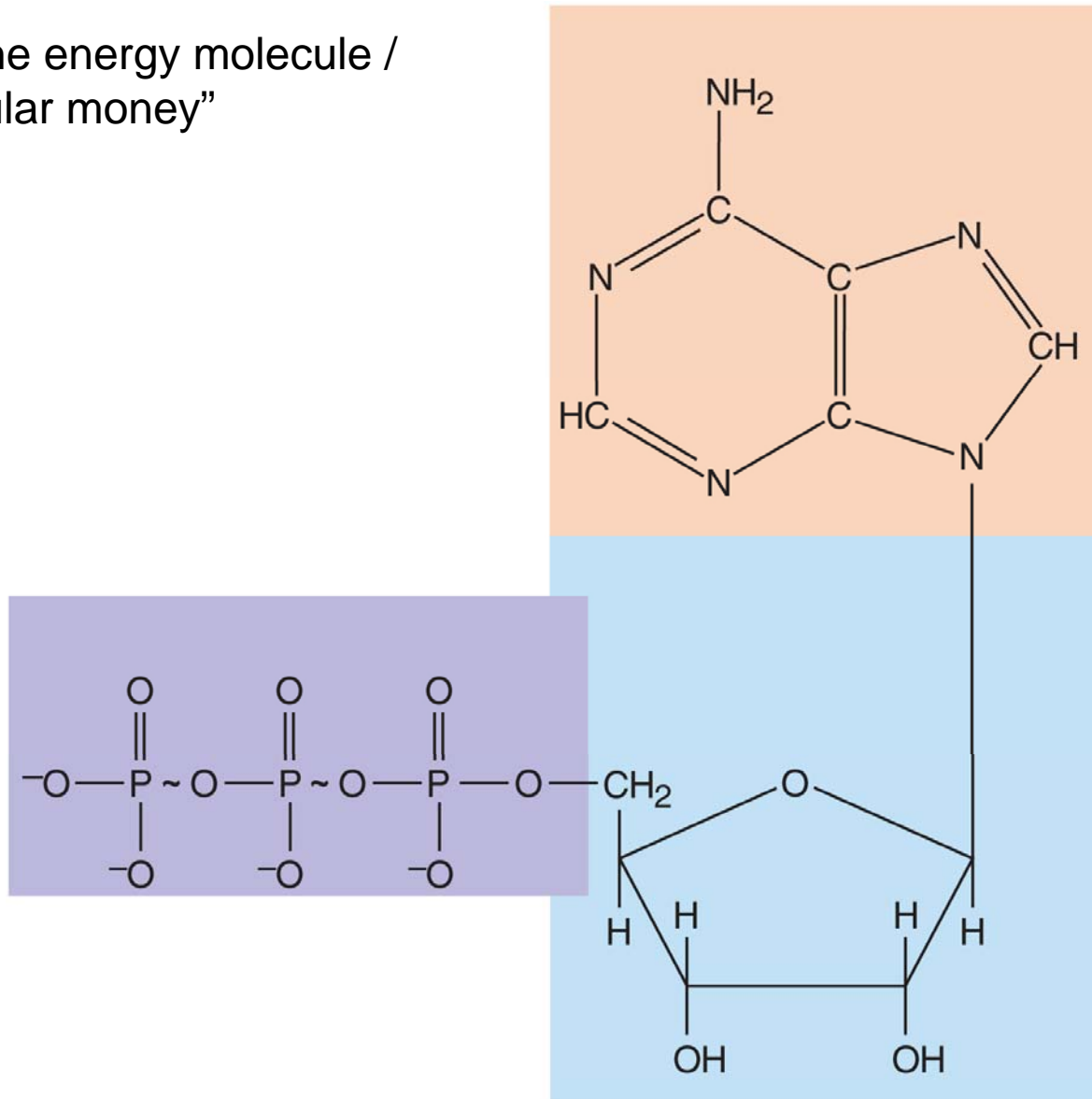


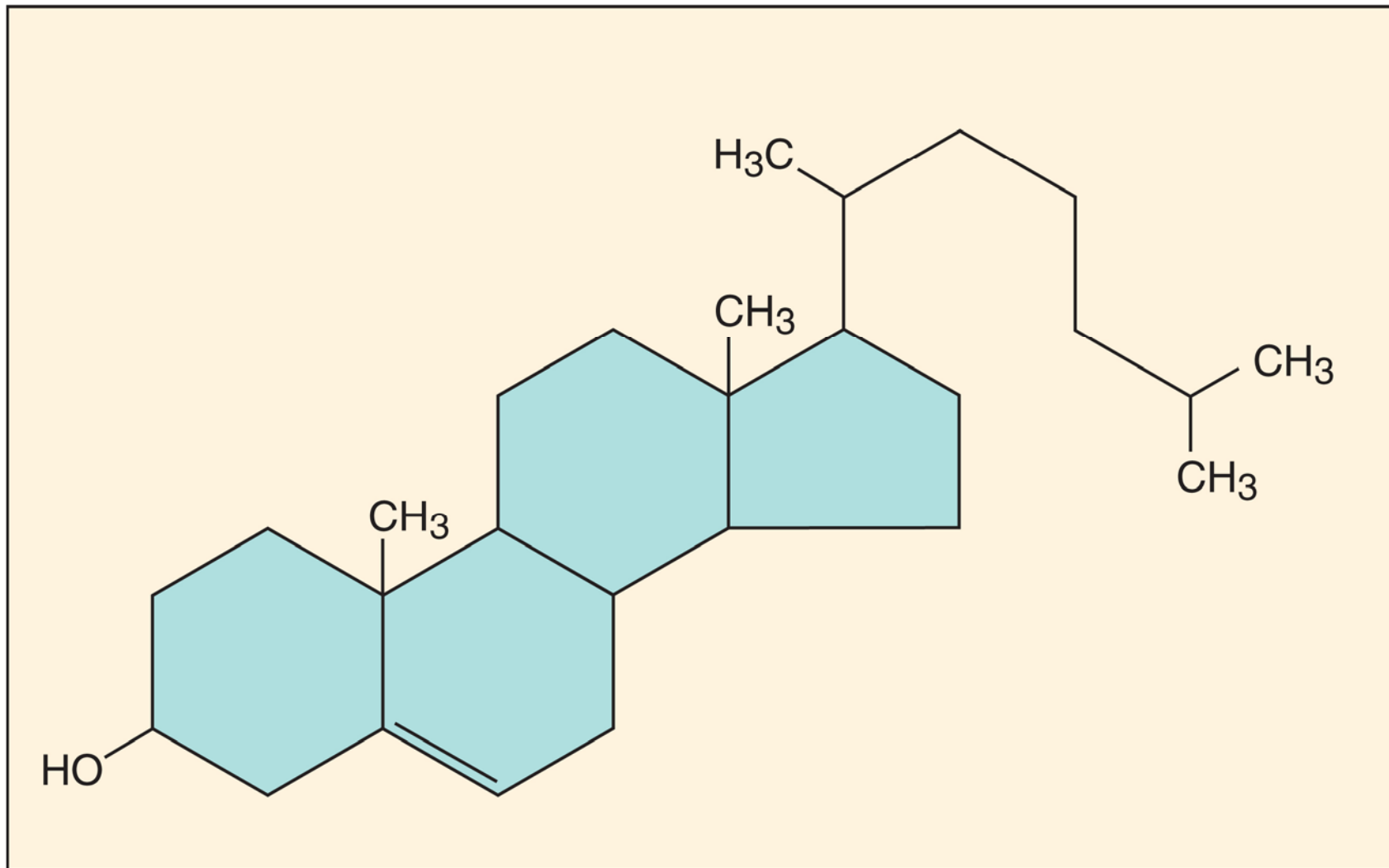
One of 20 Amino Acid / pink area = "R" group = variable portion /
Individual amino acids bond together to make proteins.

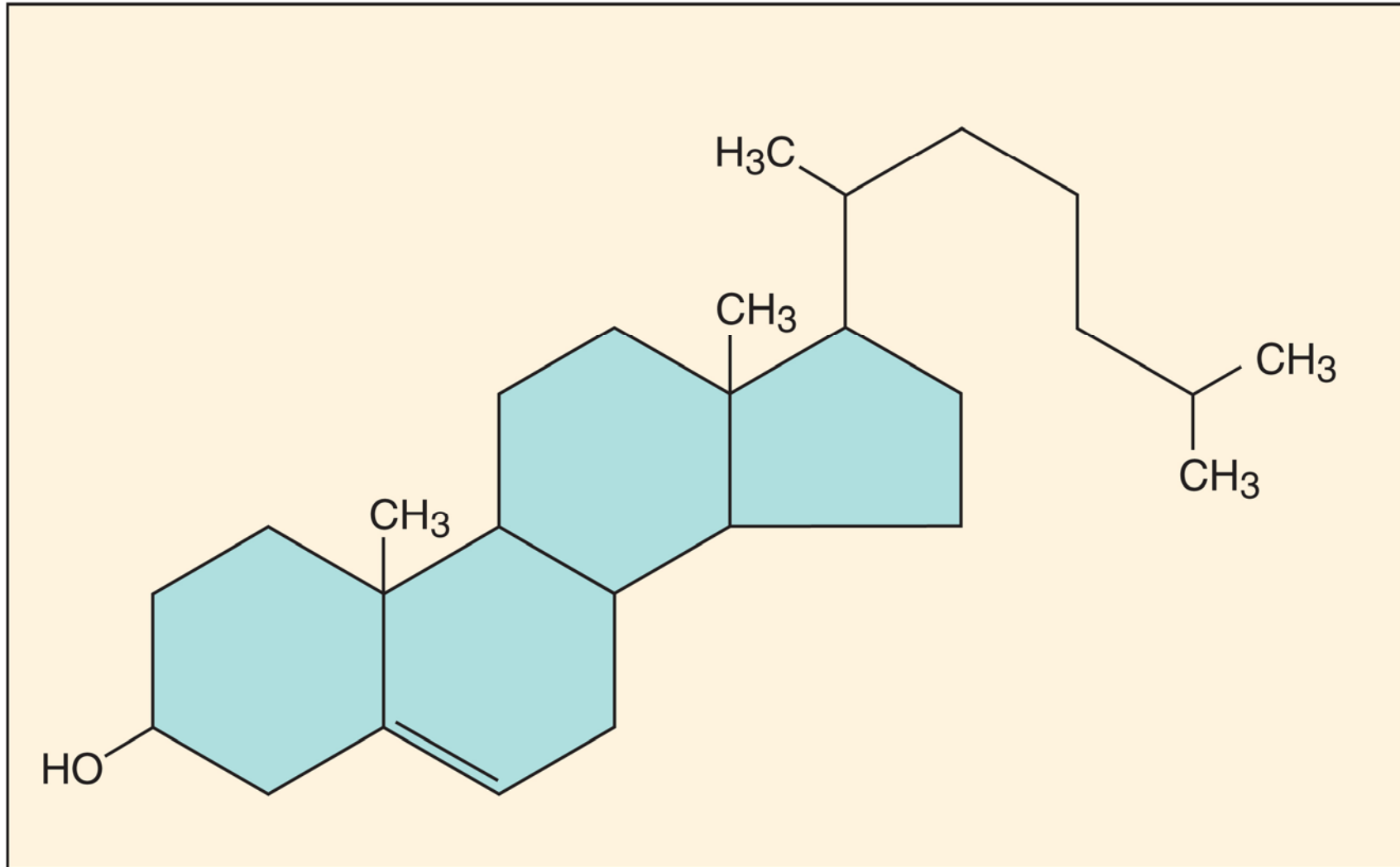




ATP / the energy molecule /
“molecular money”

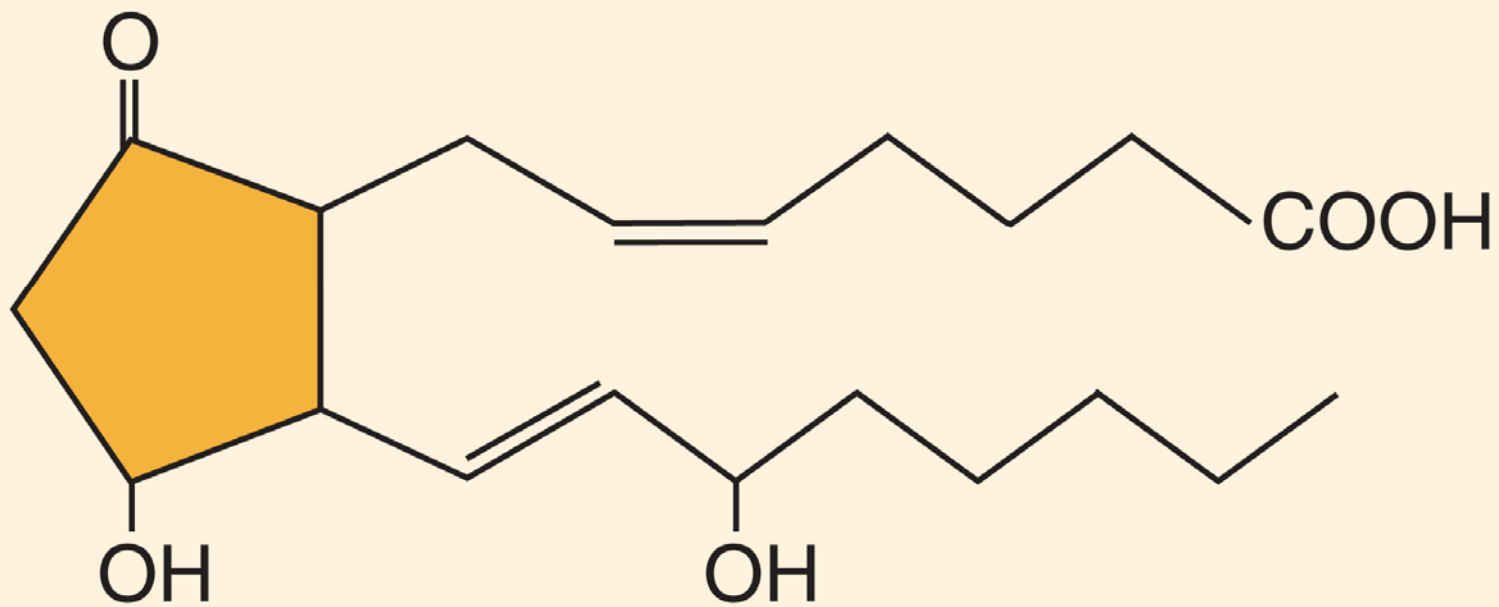




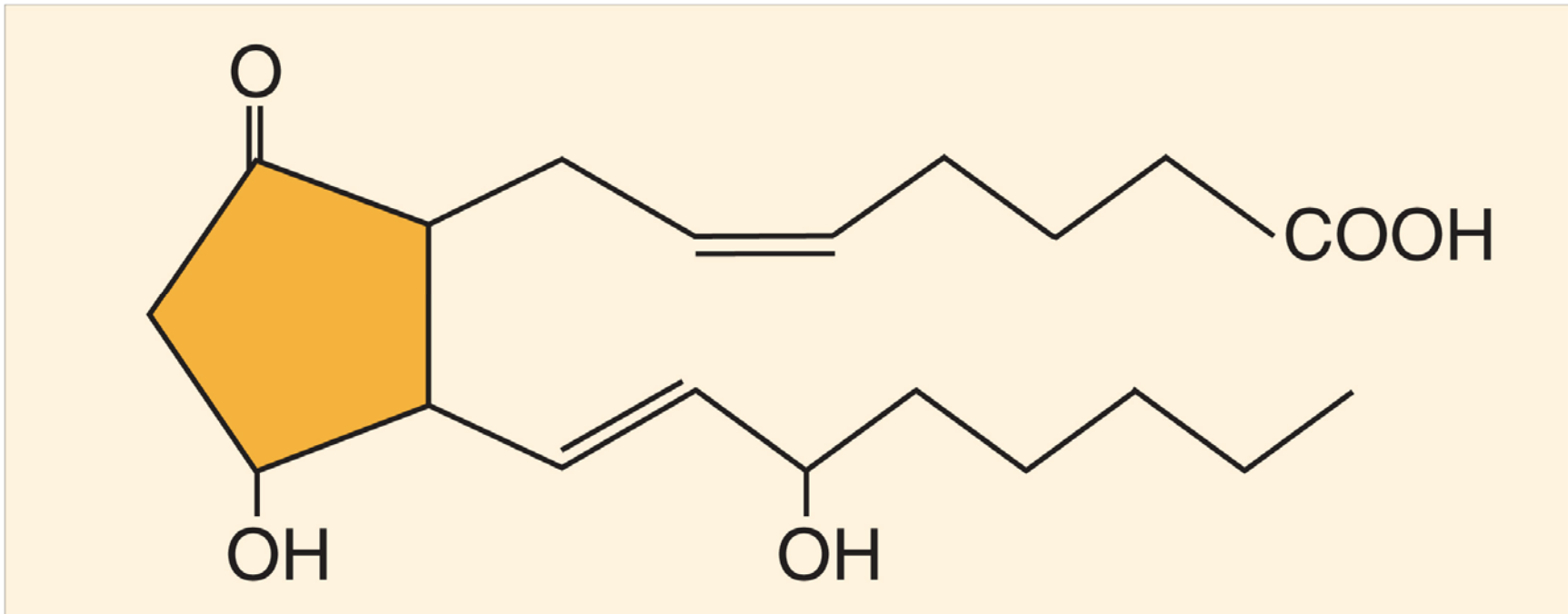


Cholesterol / type of lipid / not used for energy /
precursor for hormones and vitamin D

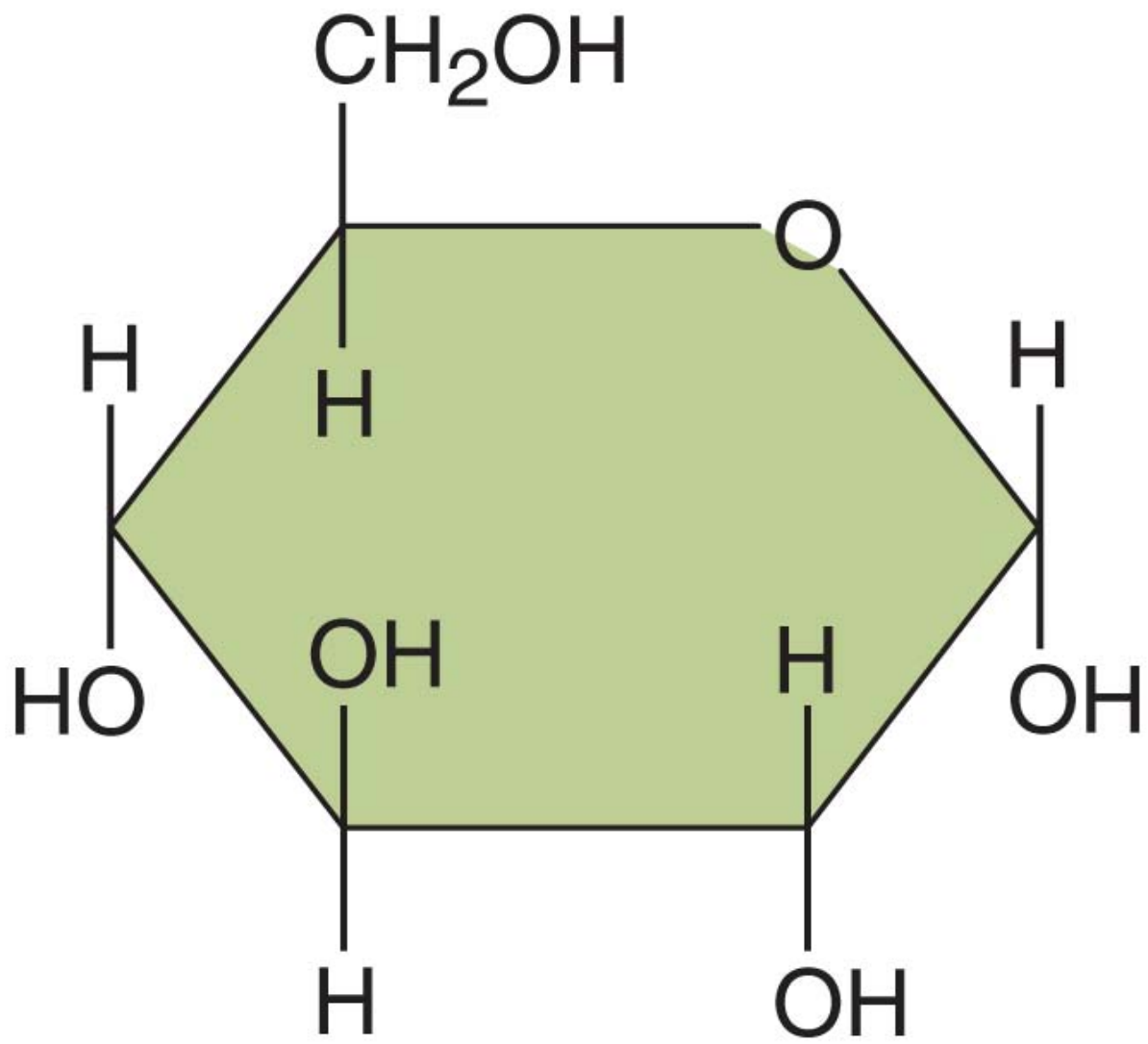
Copyright © The McGraw-Hill Companies, Inc. Permission required for reproduction or display.

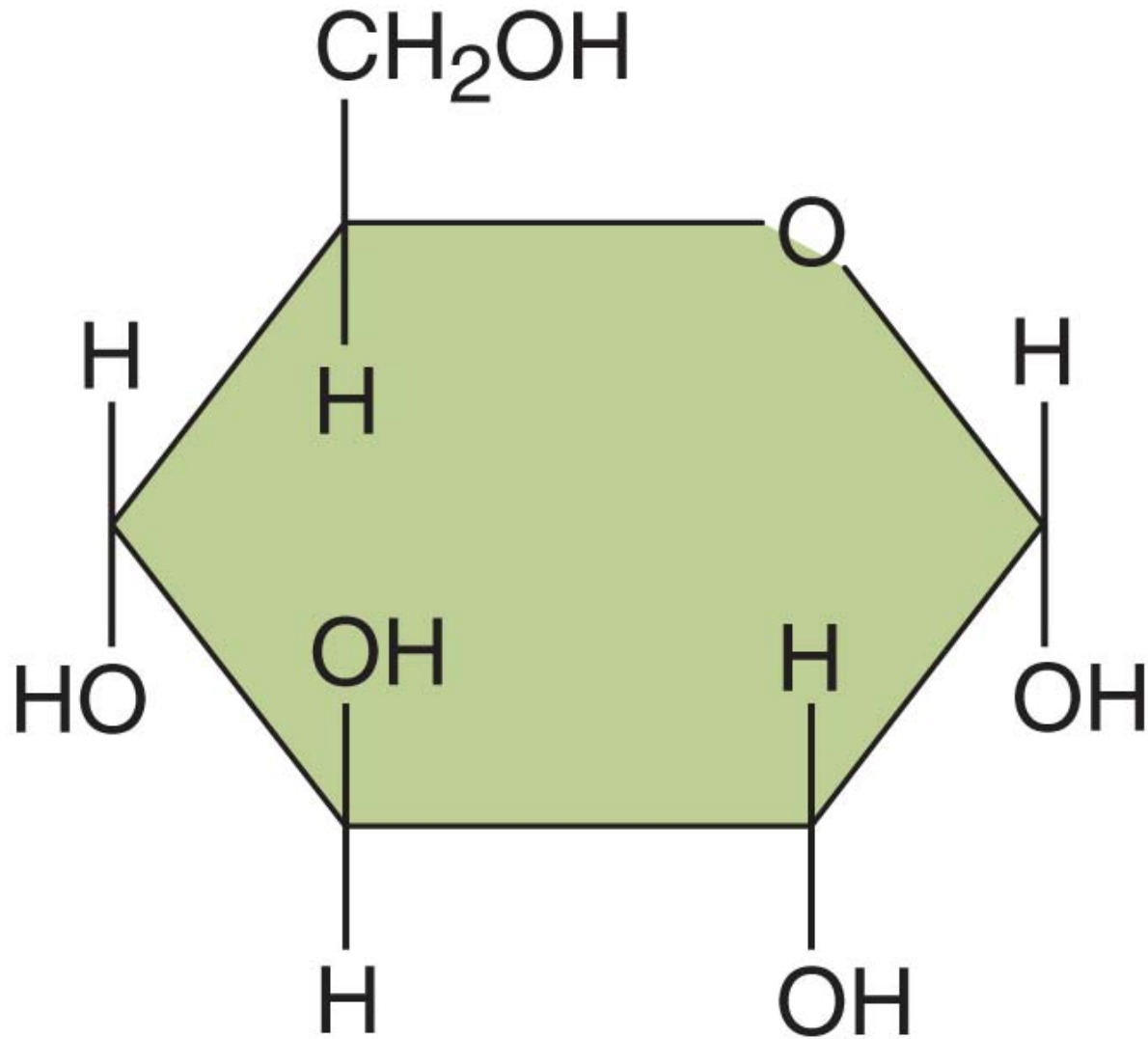


Copyright © The McGraw-Hill Companies, Inc. Permission required for reproduction or display.

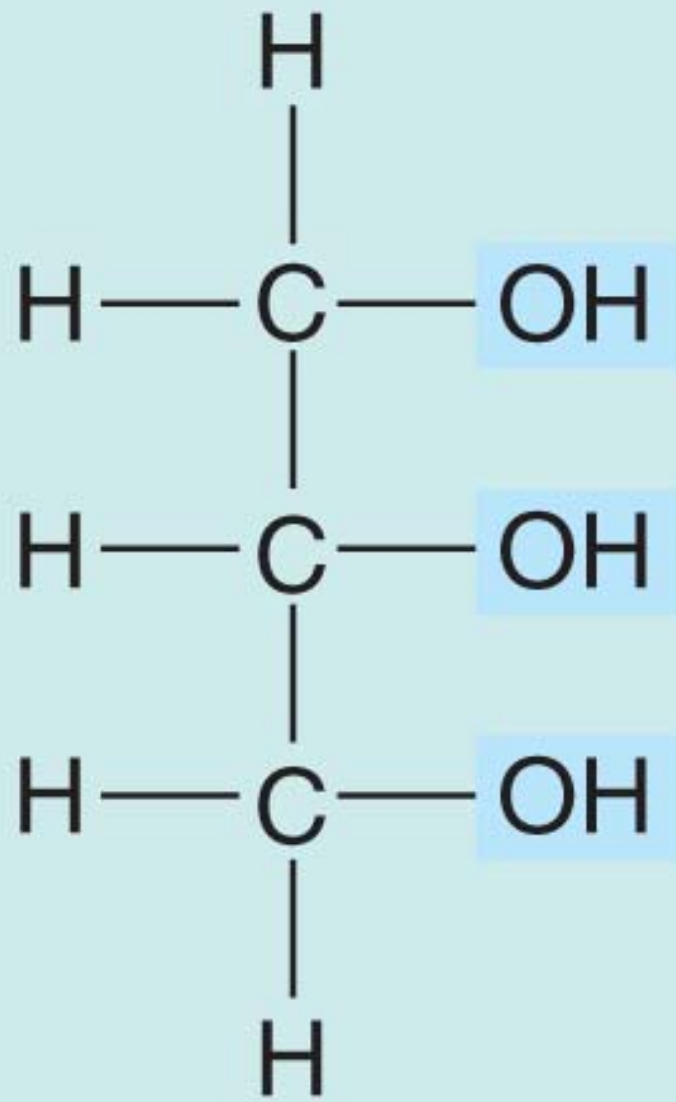


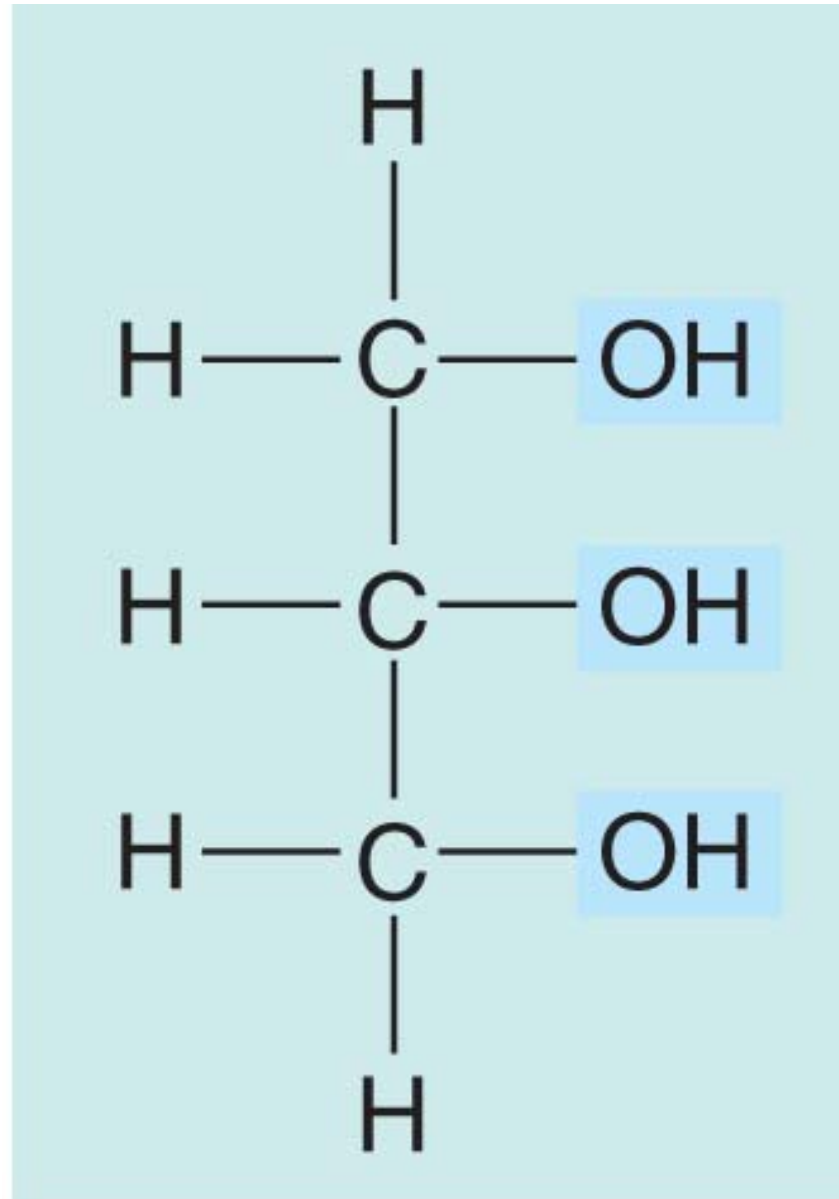
Eicosanoid / type of lipid used as intracellular messenger molecule



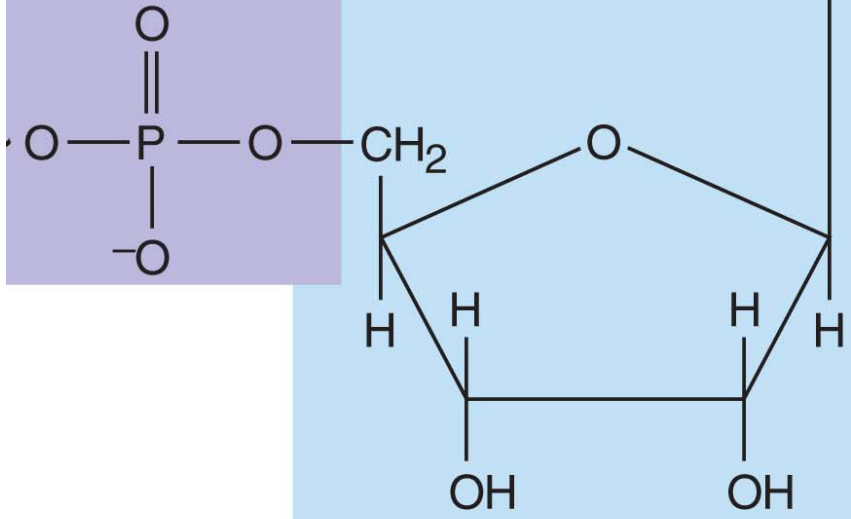
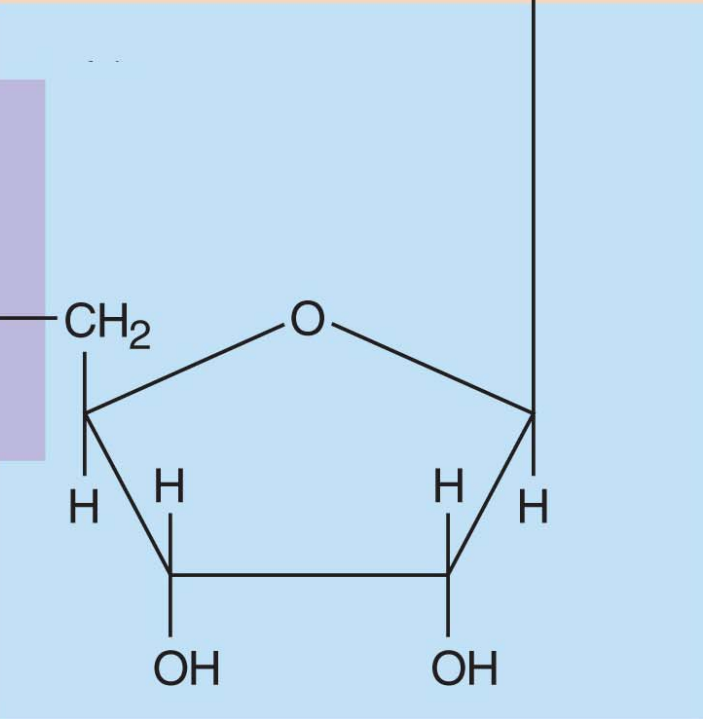
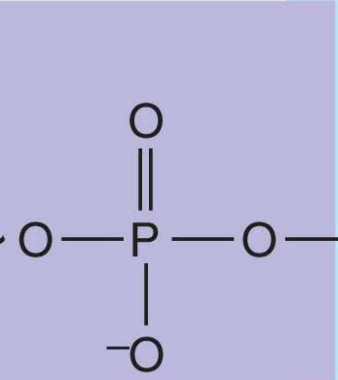
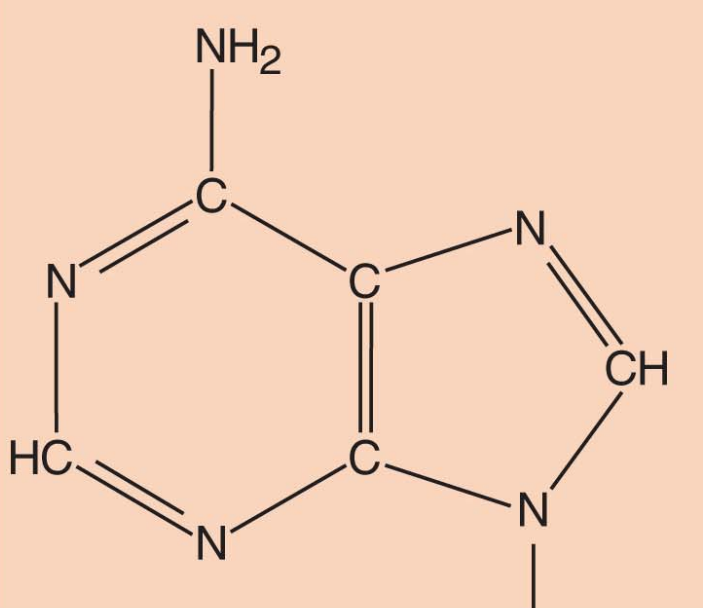


Glucose / monosaccharide / the blood sugar / glycogen is polymer of glucose molecules



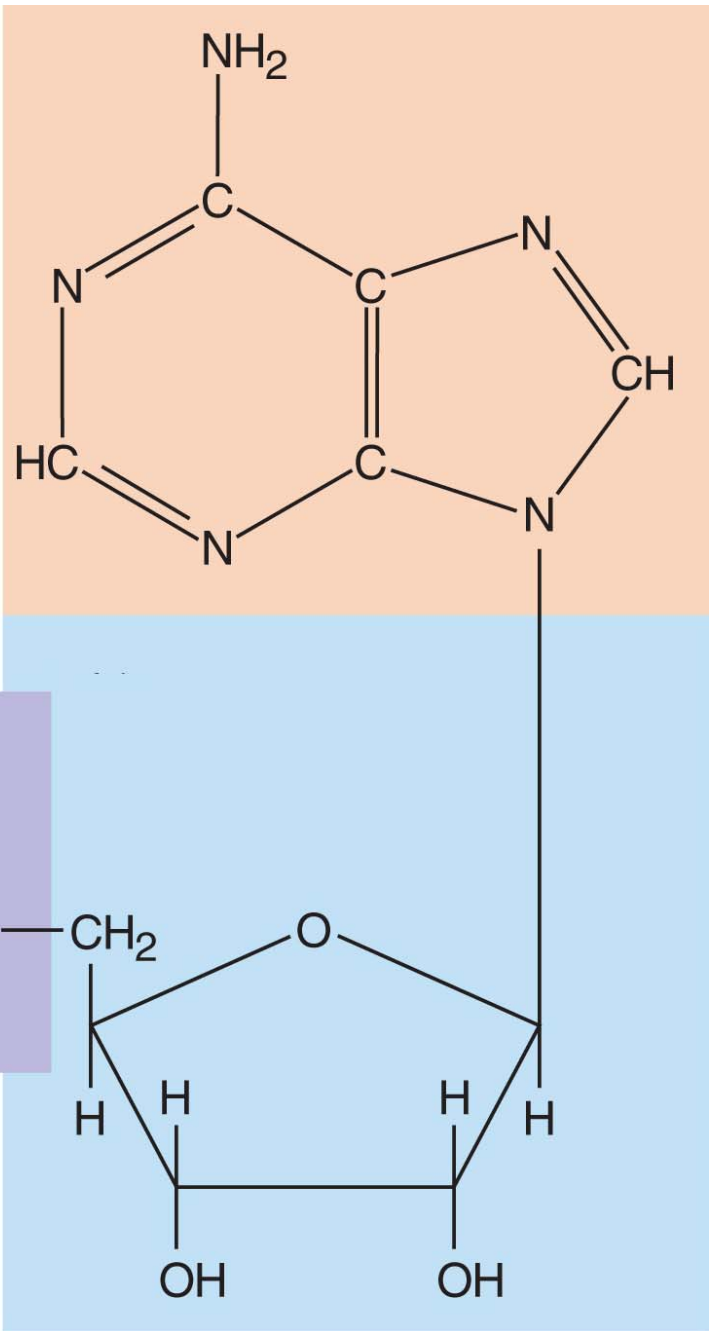


Glycerol / backbone of triglyceride / one fatty acids
will bind to each "OH" to form a triglyceride

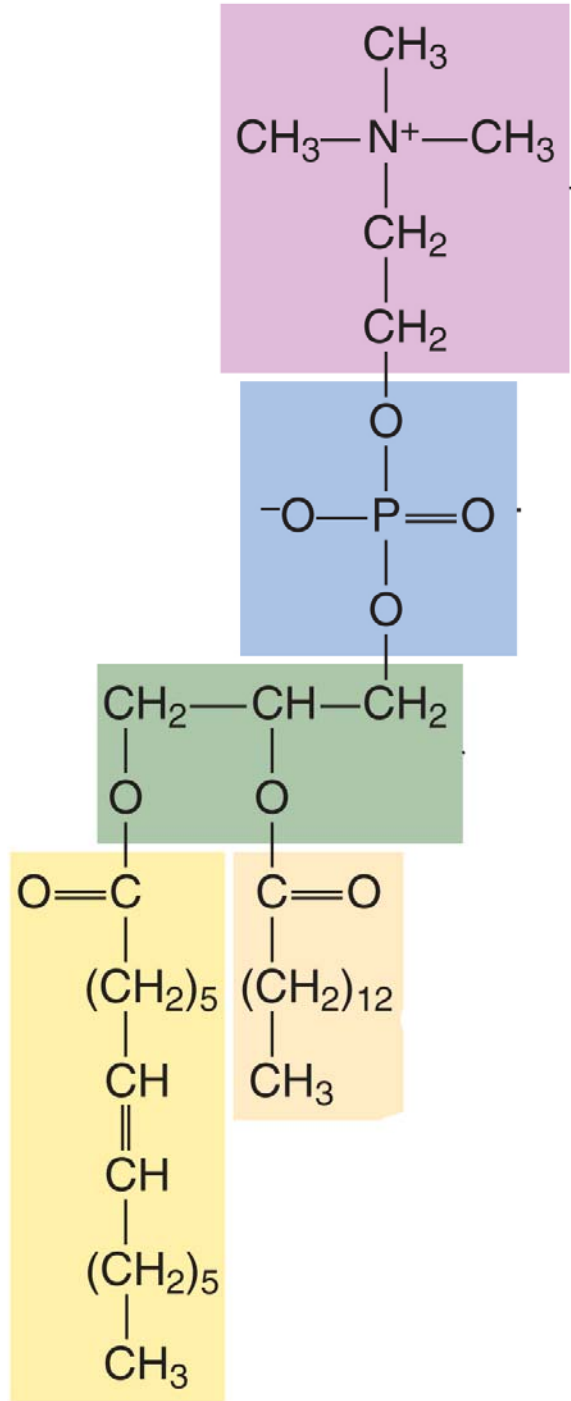


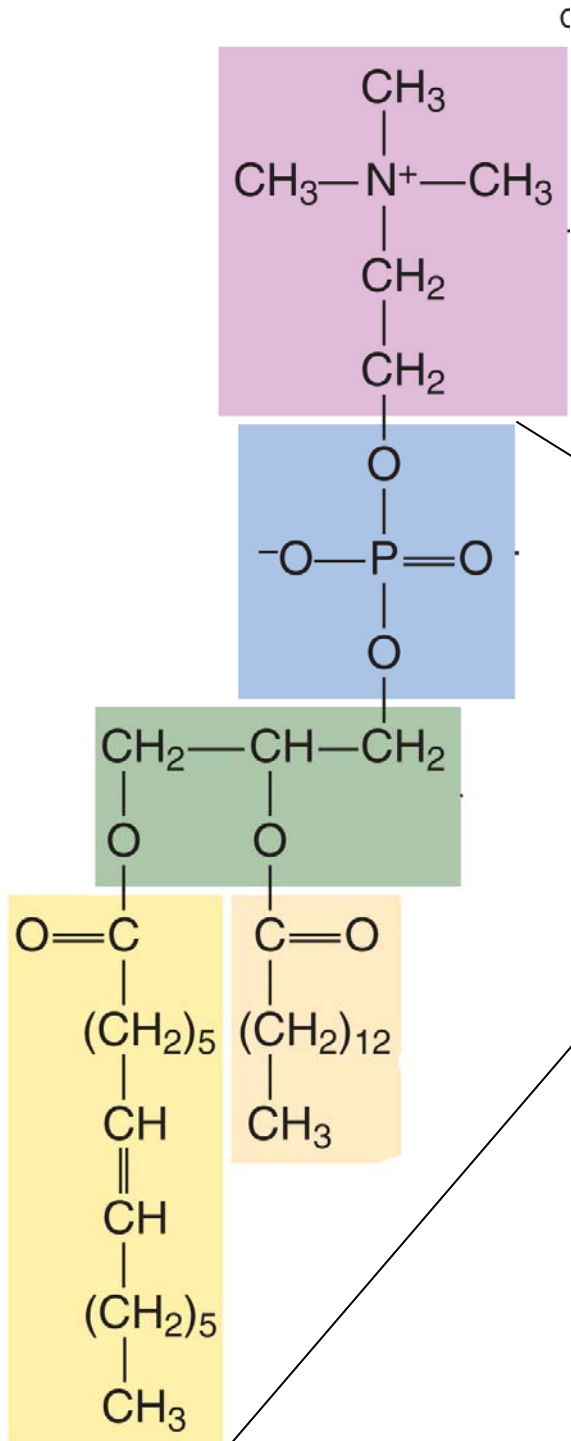
Nucleotide / nitrogen
base – sugar –
phosphate

Nucleotides are the
monomers used to make
DNA and RNA polymers.



c

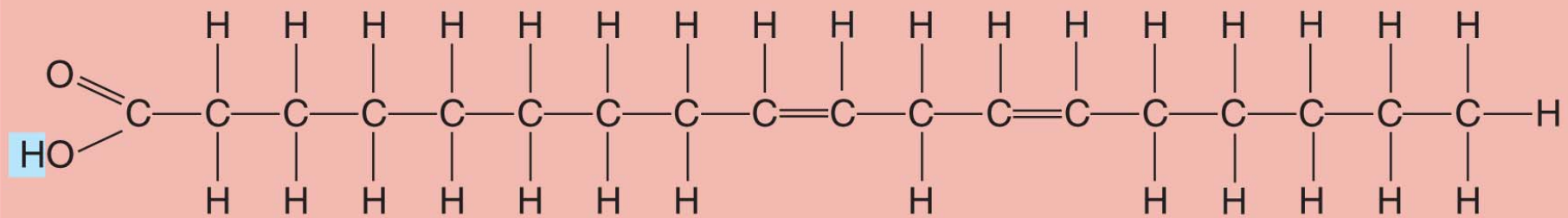


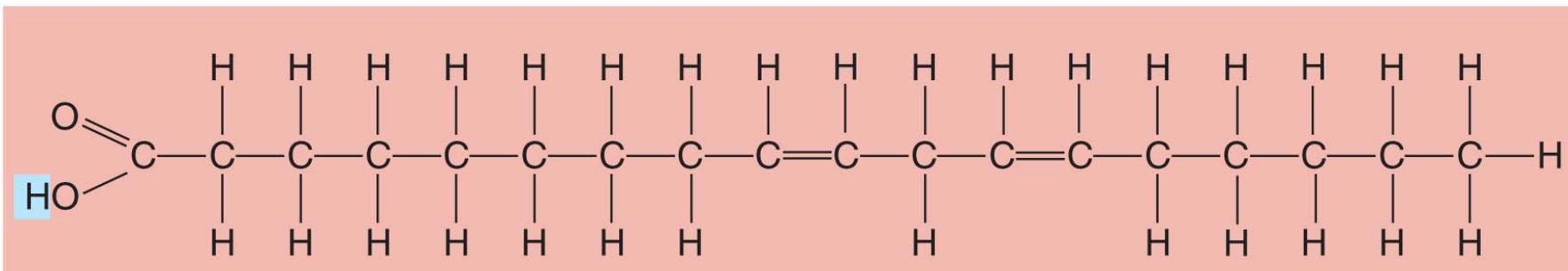


Phospholipid

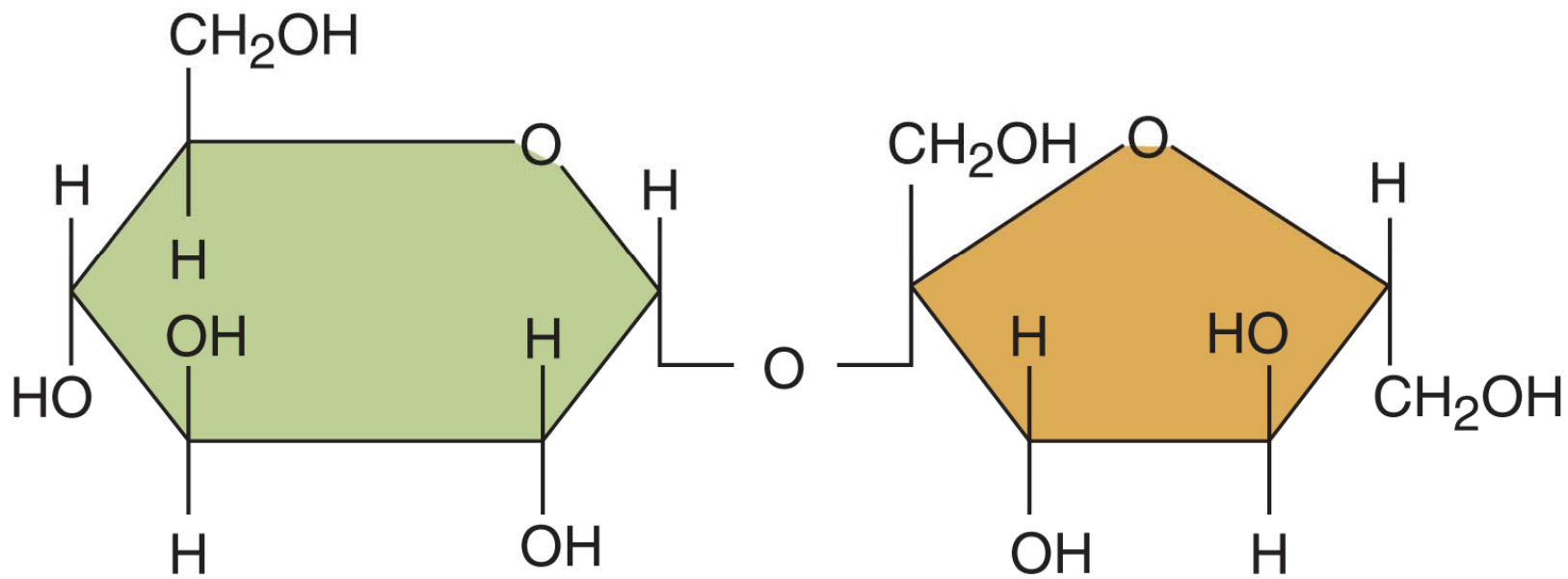
Lethicin (found in egg yolks) /
note: purple area is a choline
molecule attached to the
phospholipid

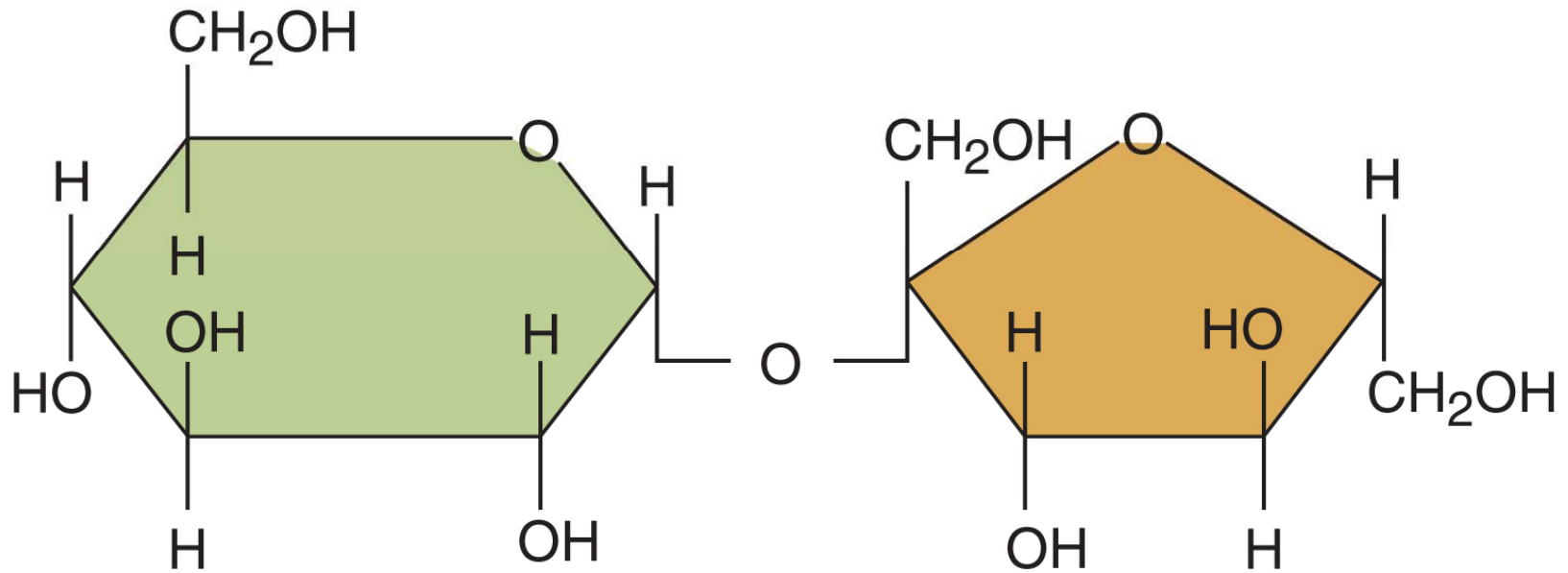
Phospholipids form bilayers
which form membranes.





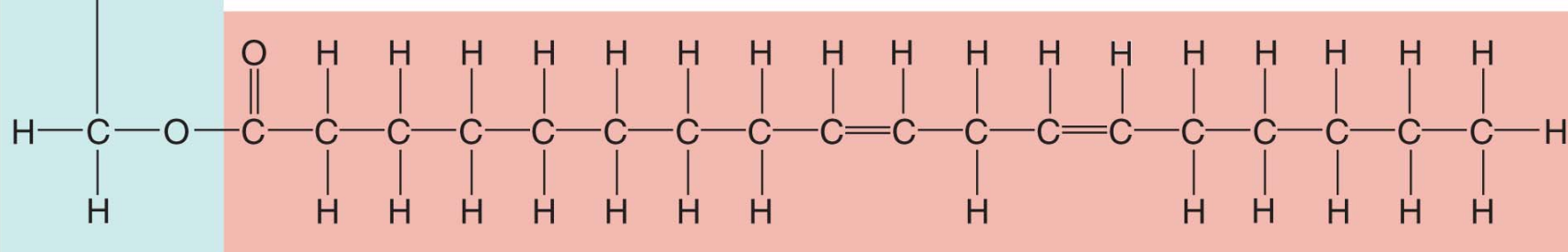
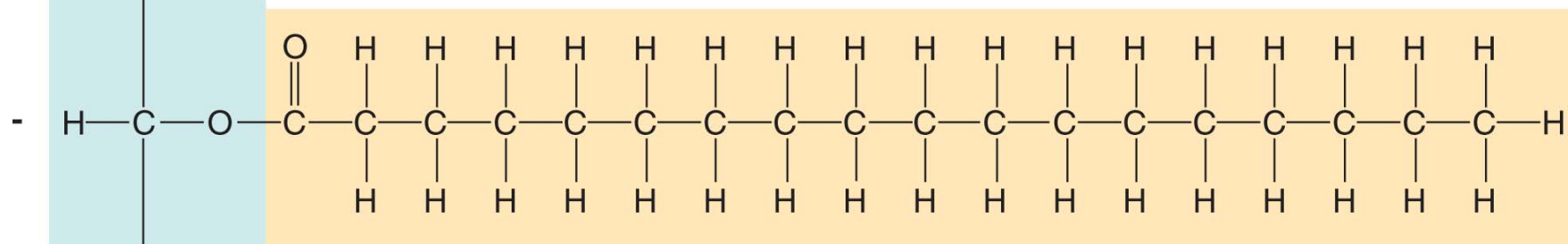
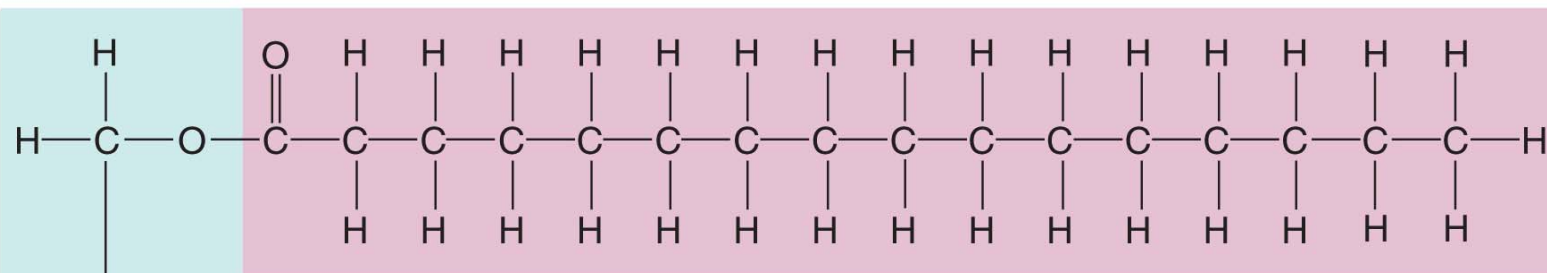
Fatty acid

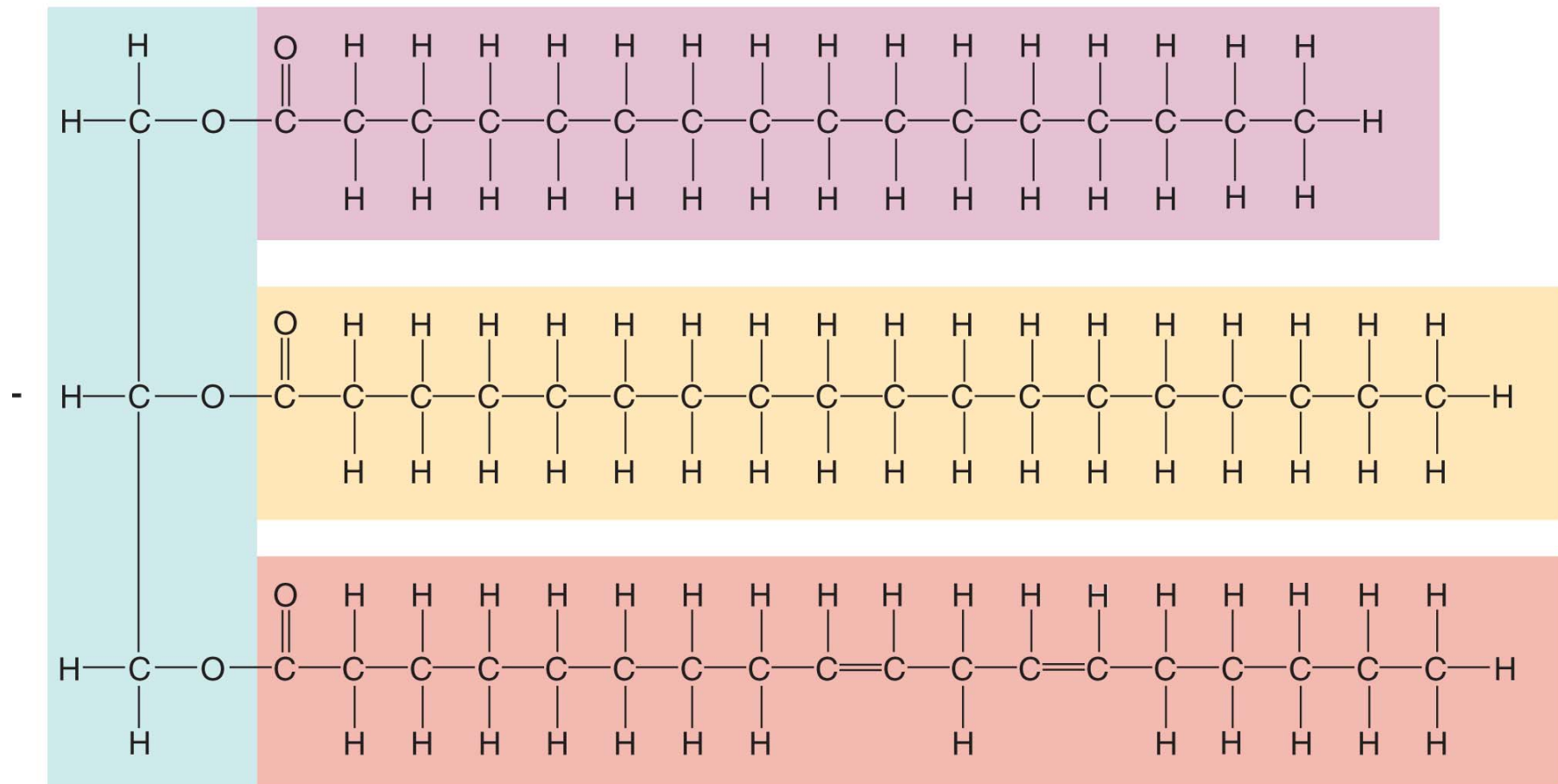




Sucrose / disaccharide (glucose and fructose)

Digested then oxidized for energy or stored as glycogen.





Triglyceride (glycerol and three fatty acids) These molecules are stored in adipocytes as fat deposits throughout our body.