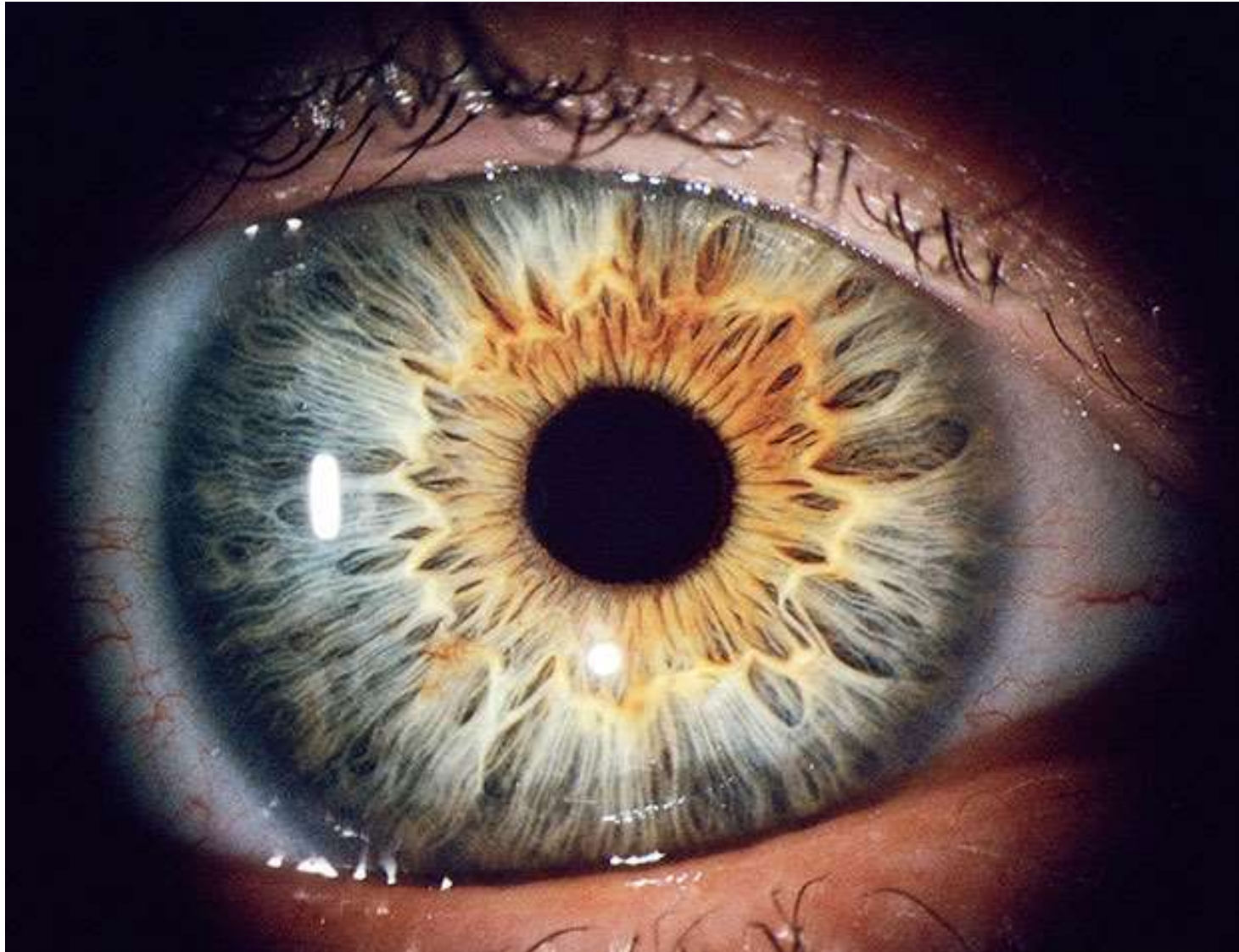
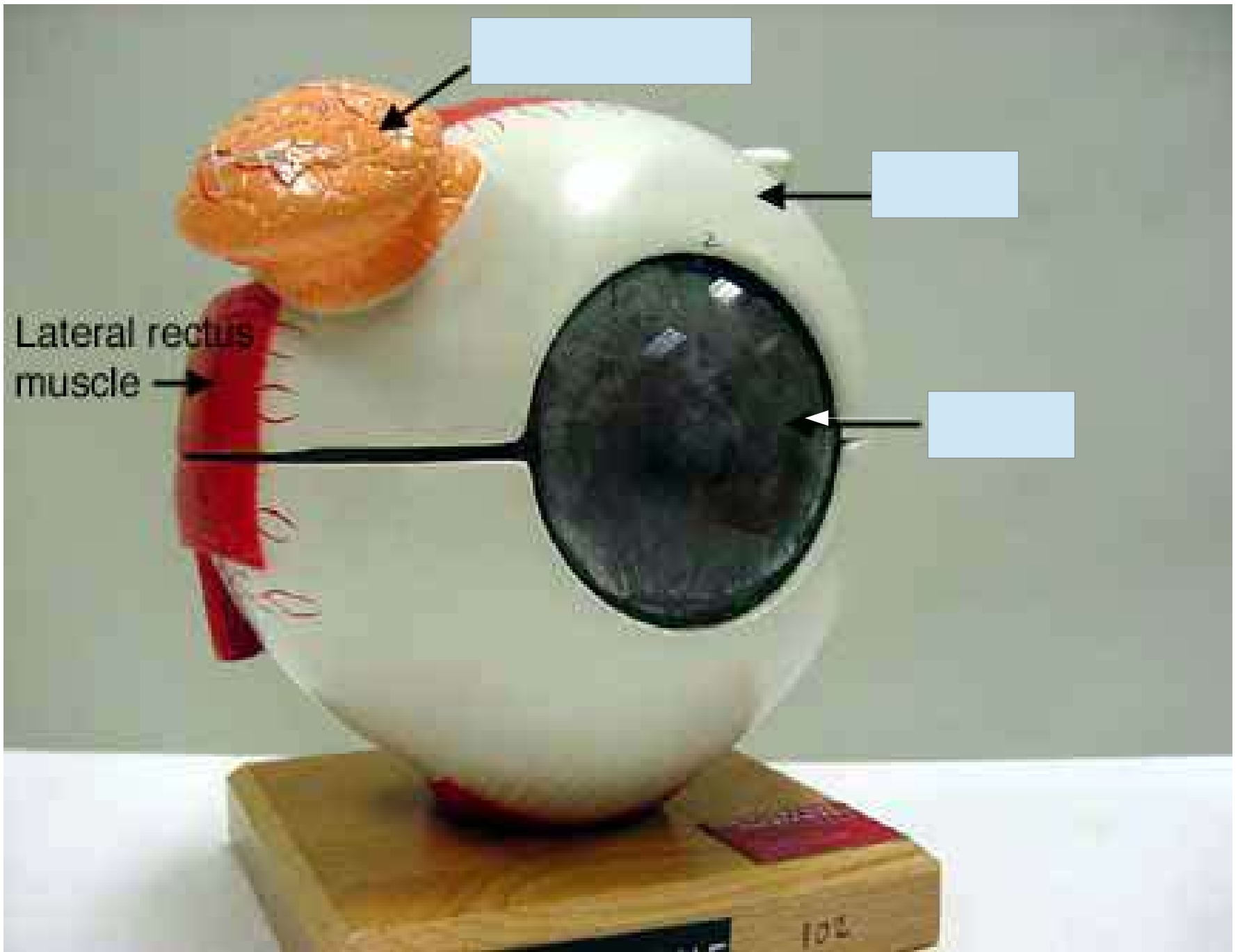
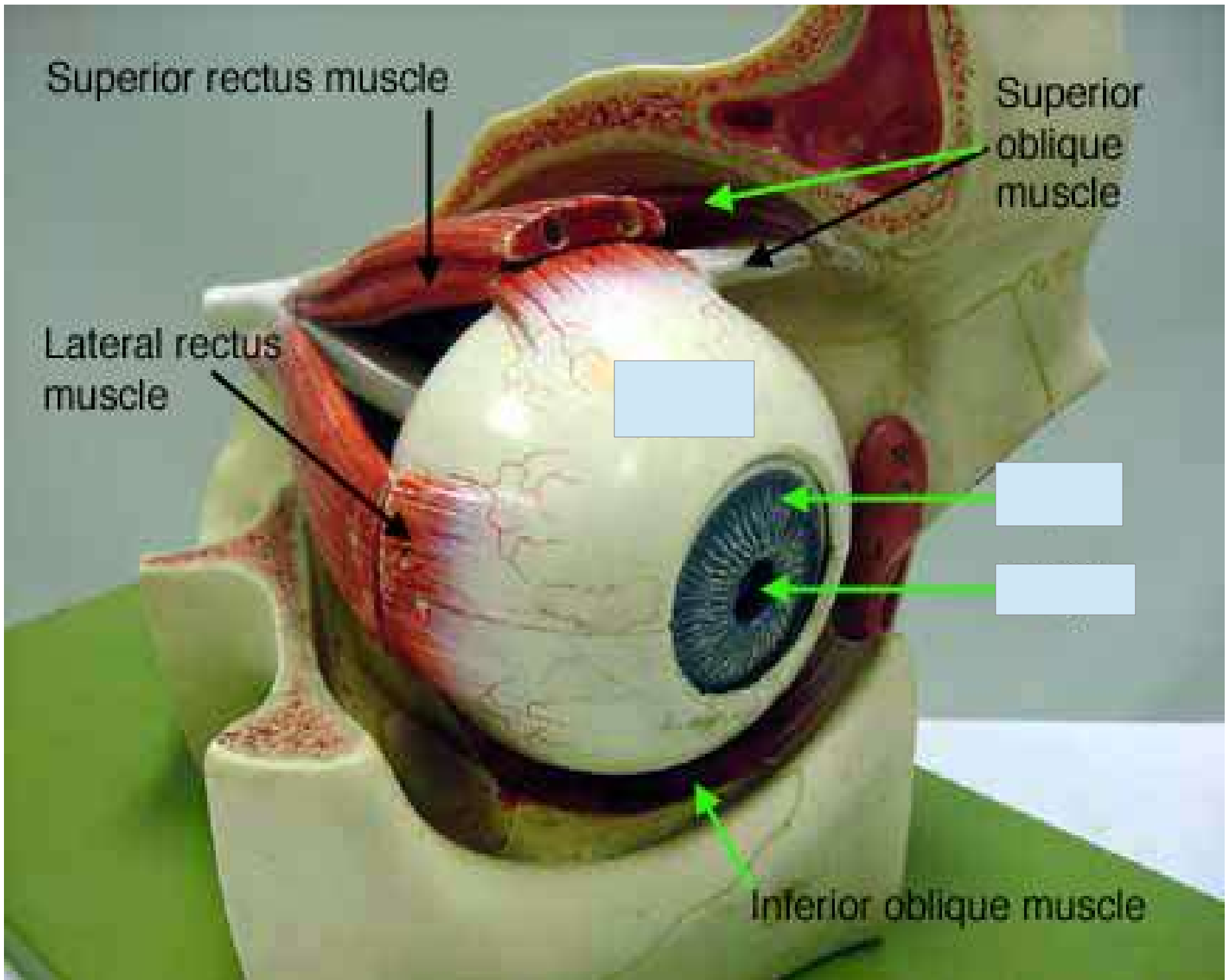


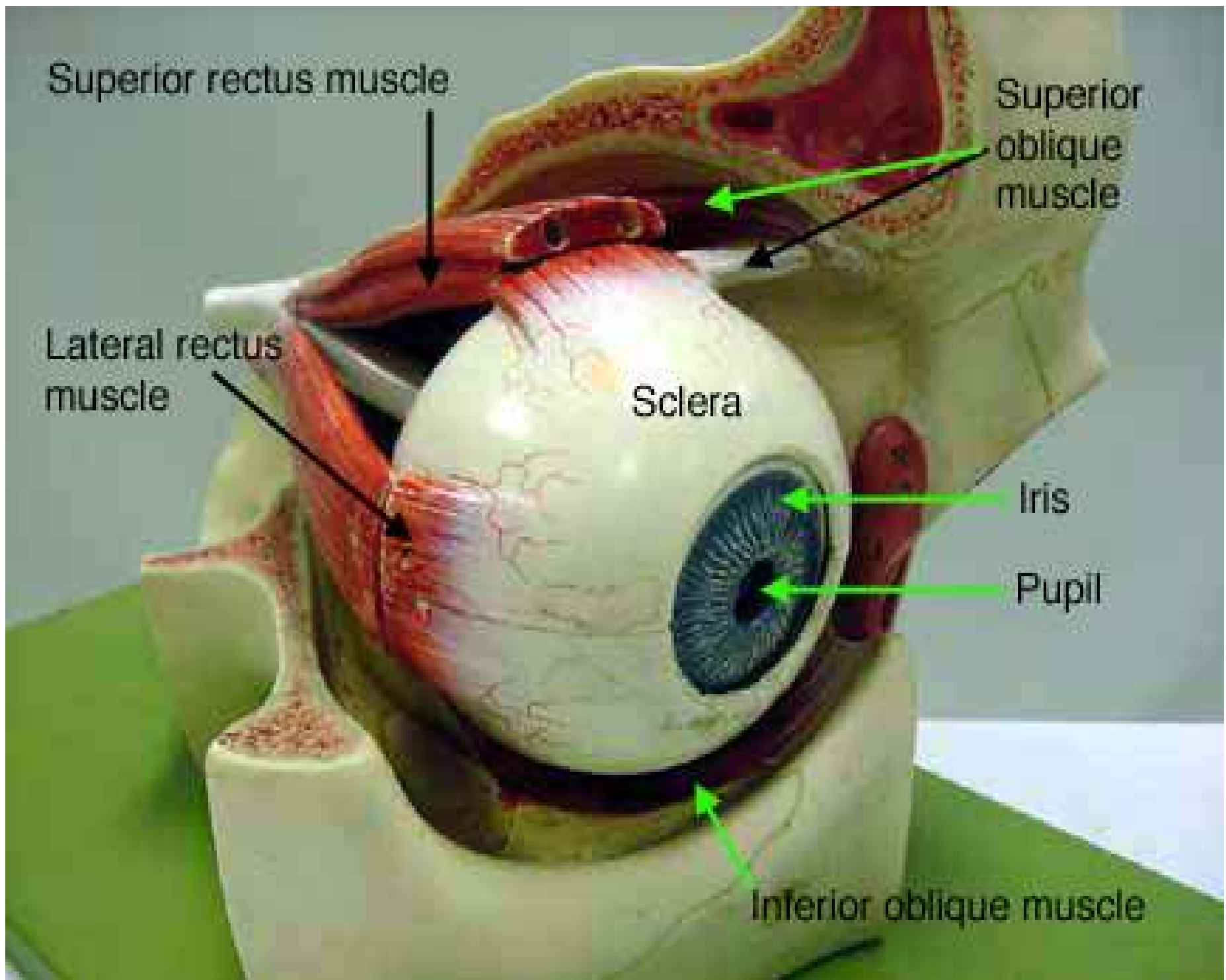
Eye Anatomy











Superior rectus muscle

Superior oblique muscle

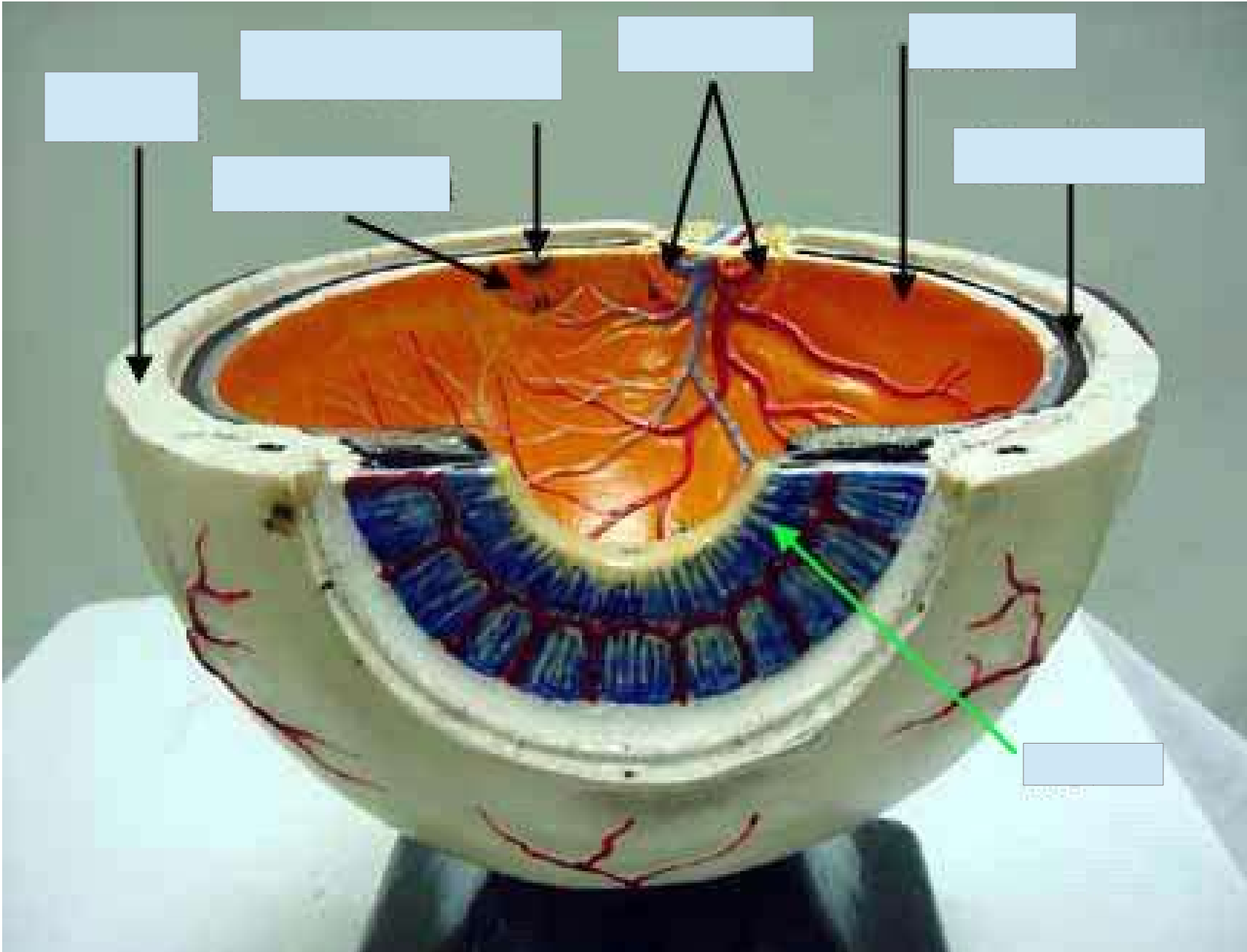
Lateral rectus muscle

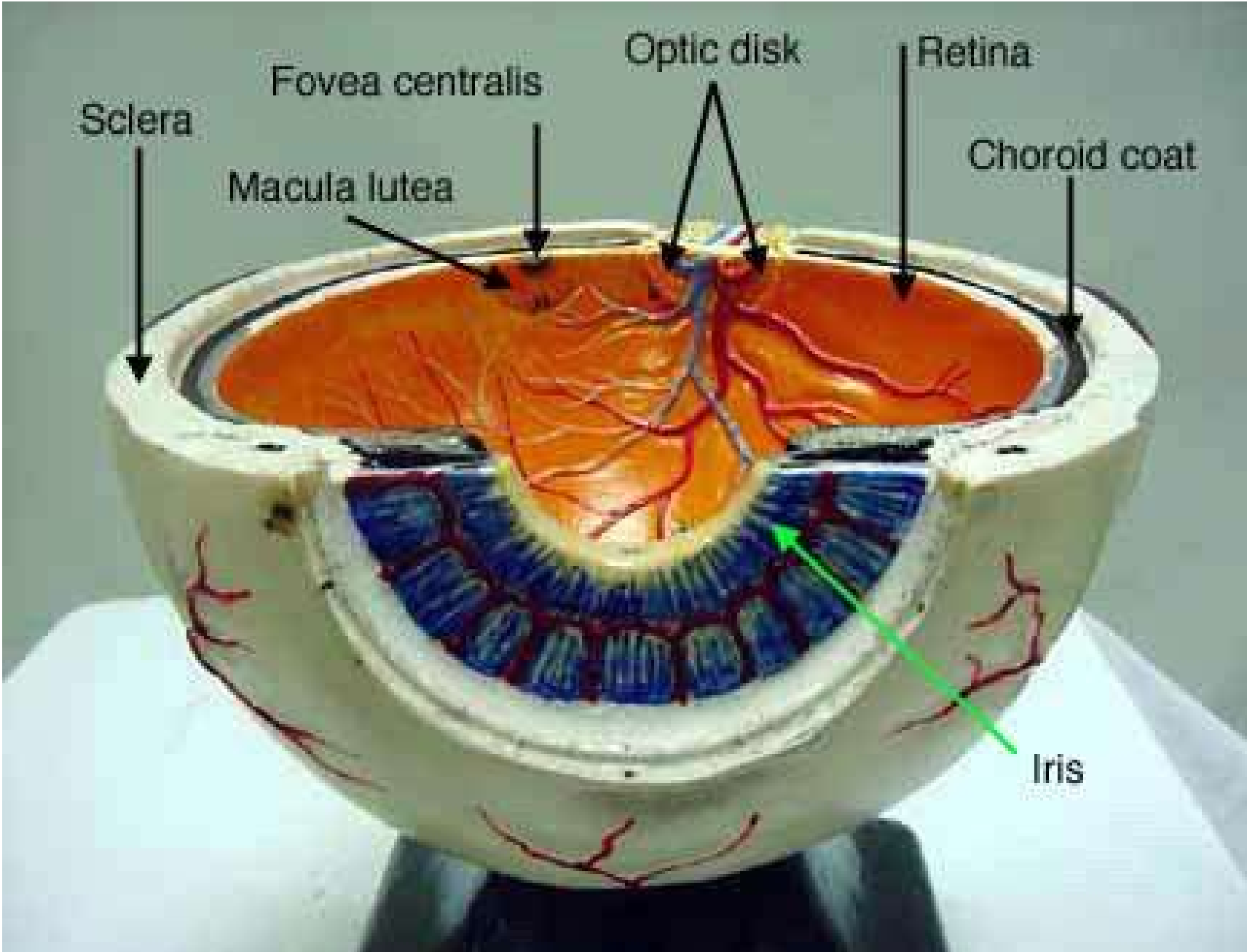
Sclera

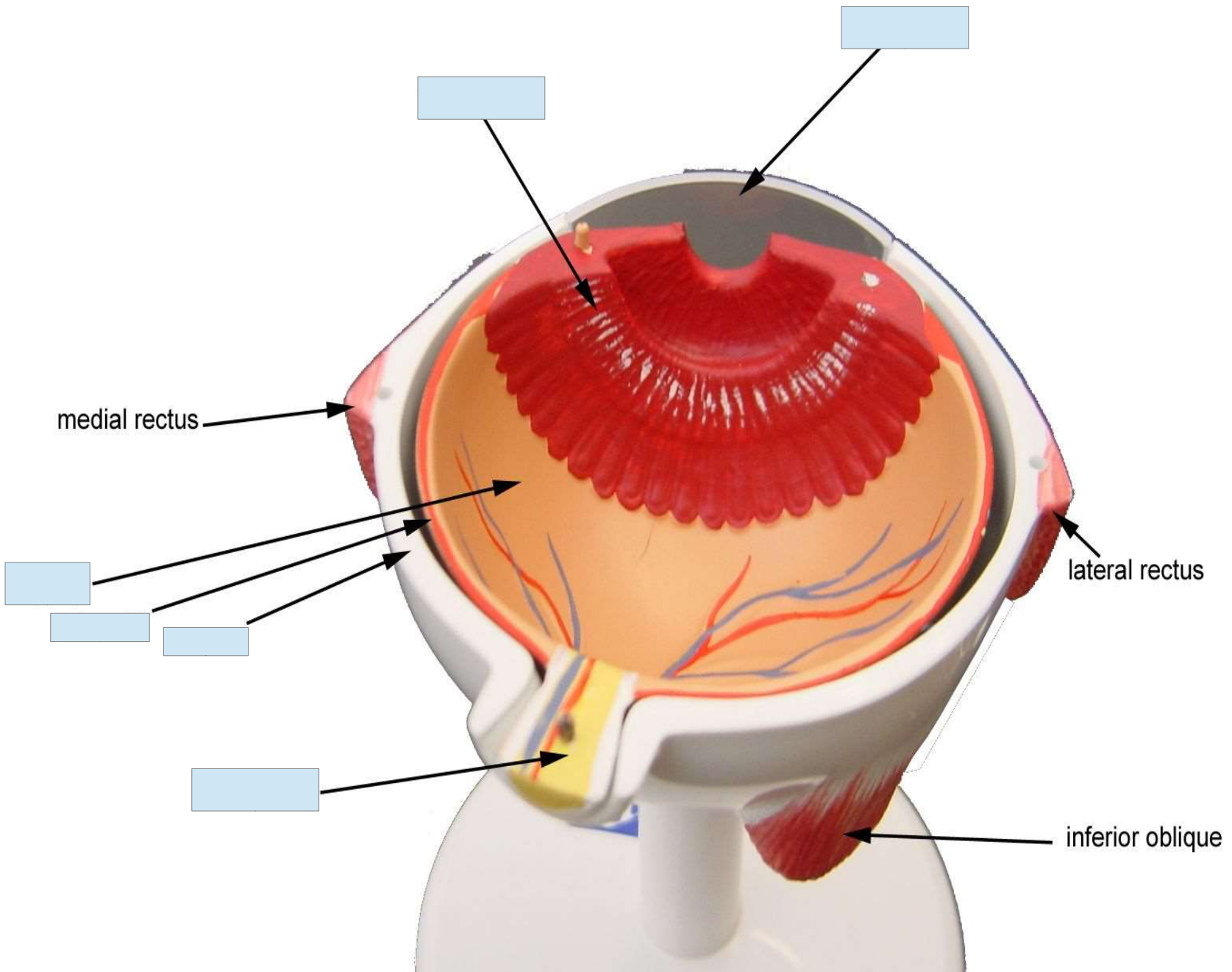
Iris

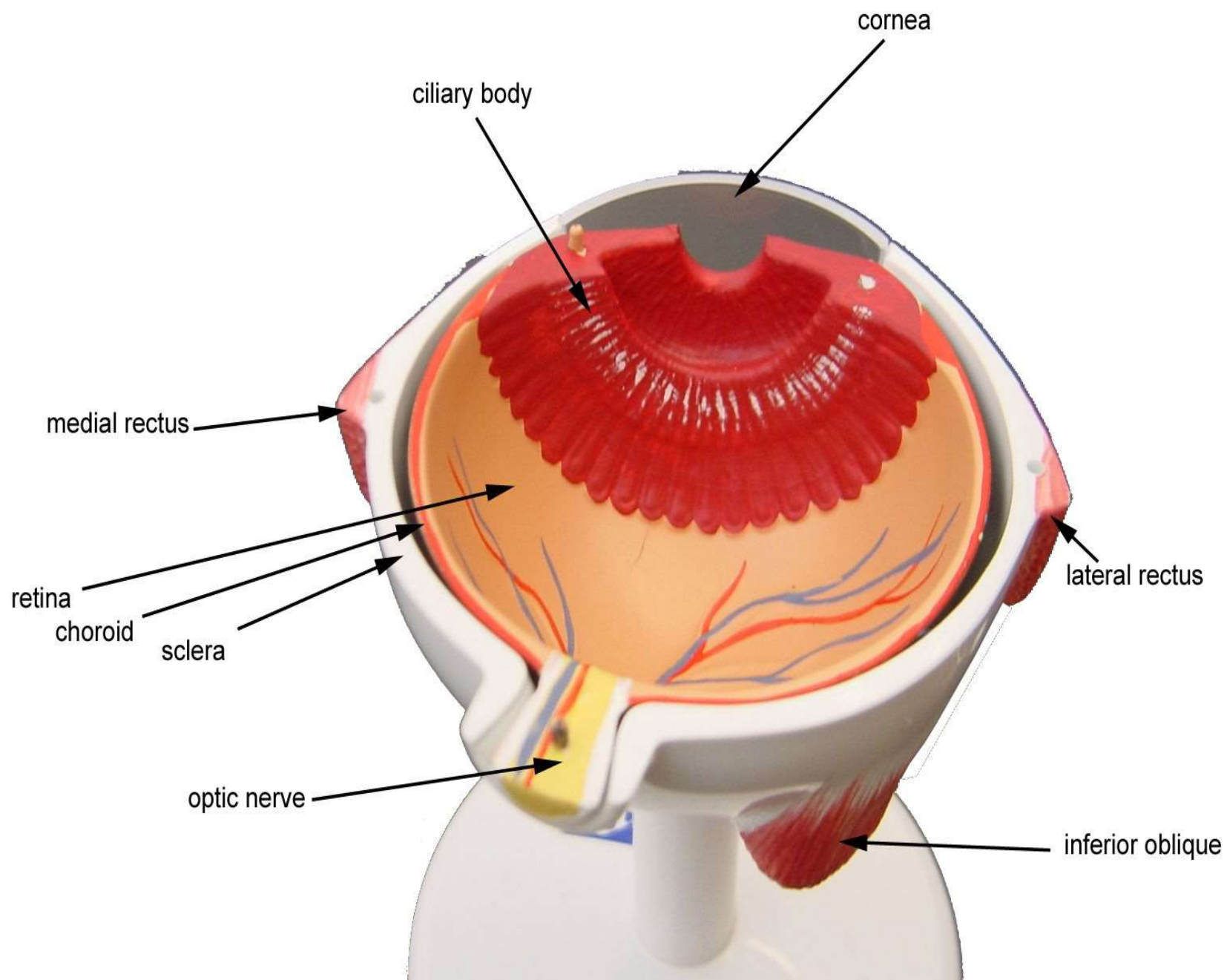
Pupil

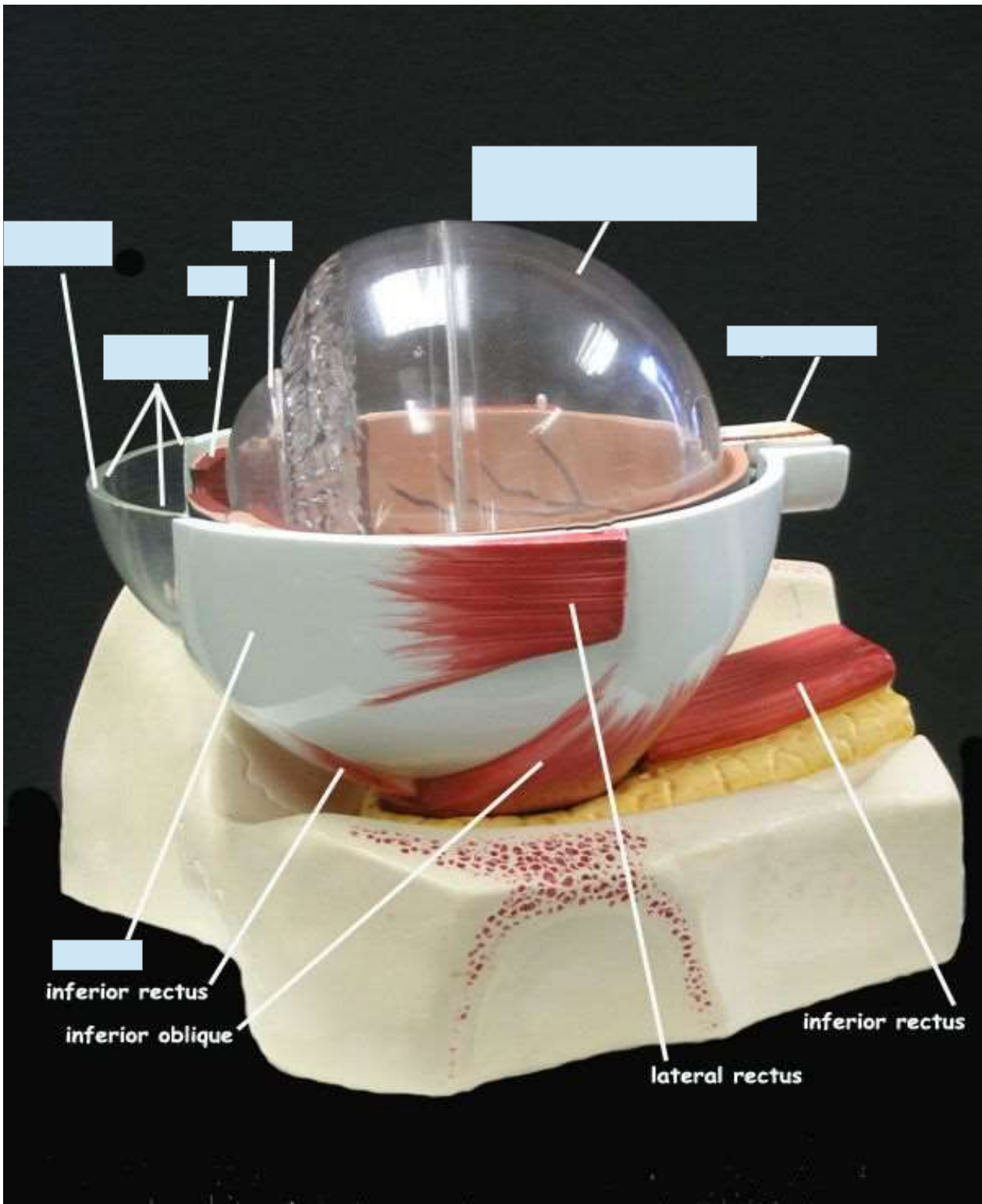
Inferior oblique muscle









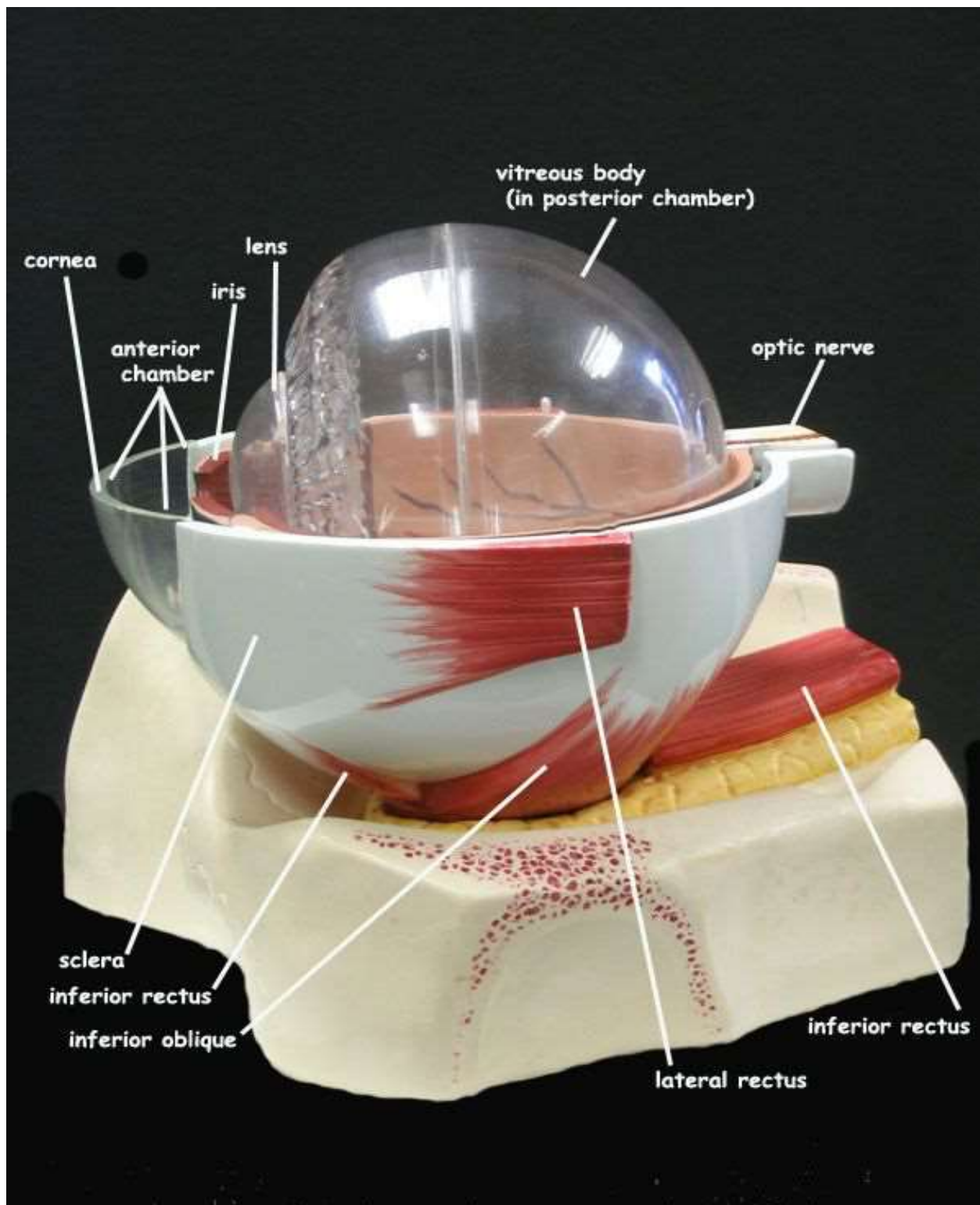


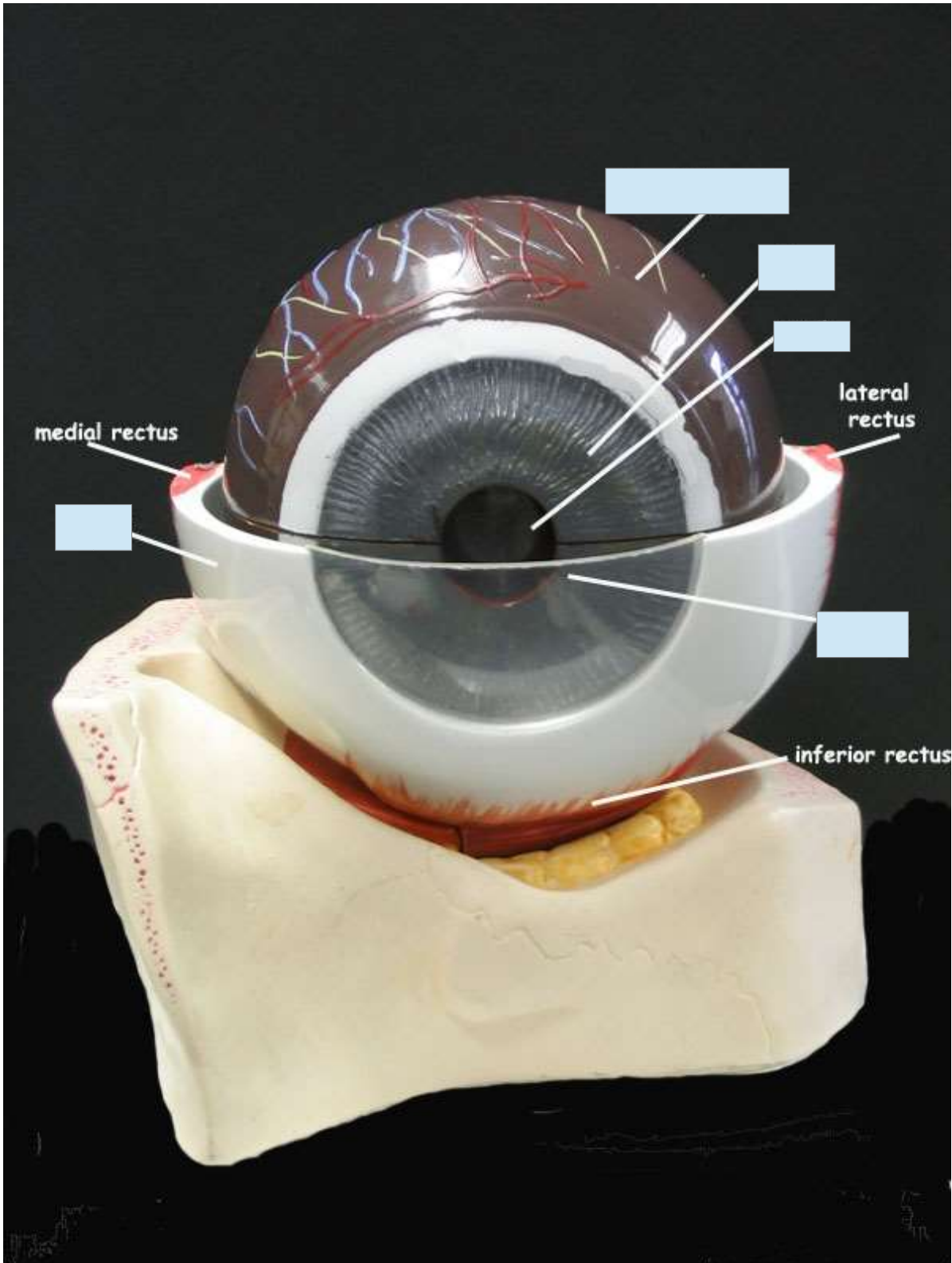
inferior rectus

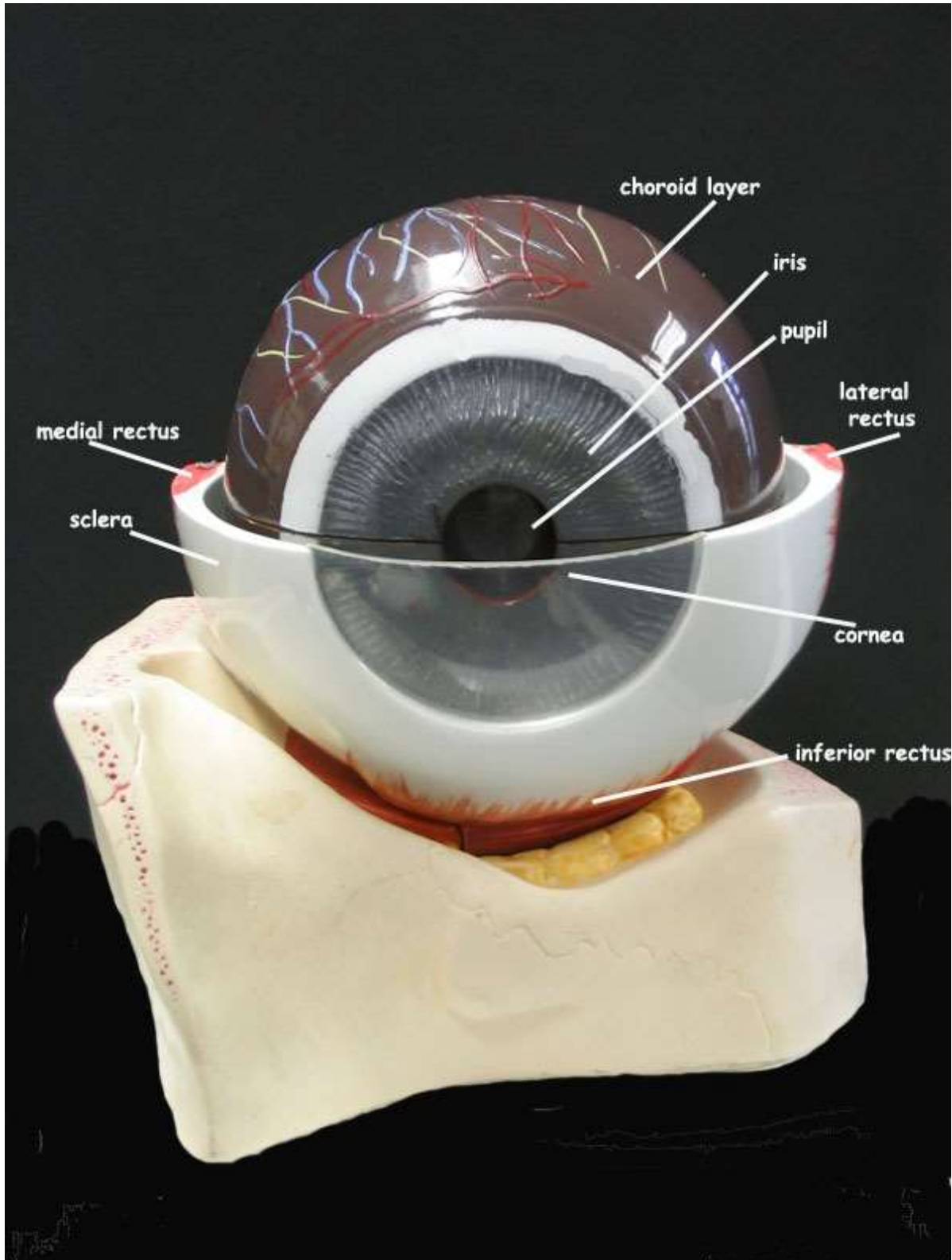
inferior oblique

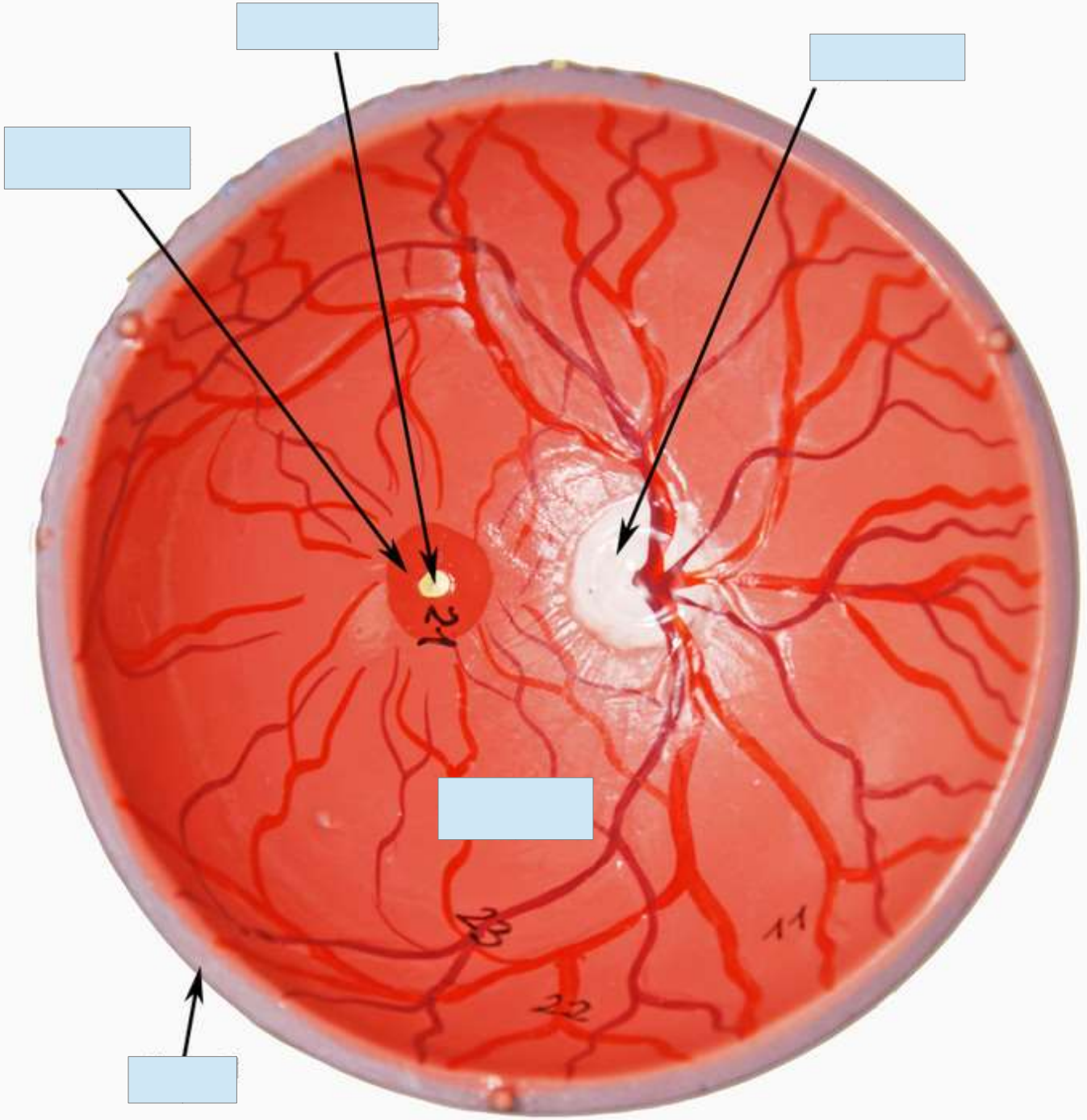
lateral rectus

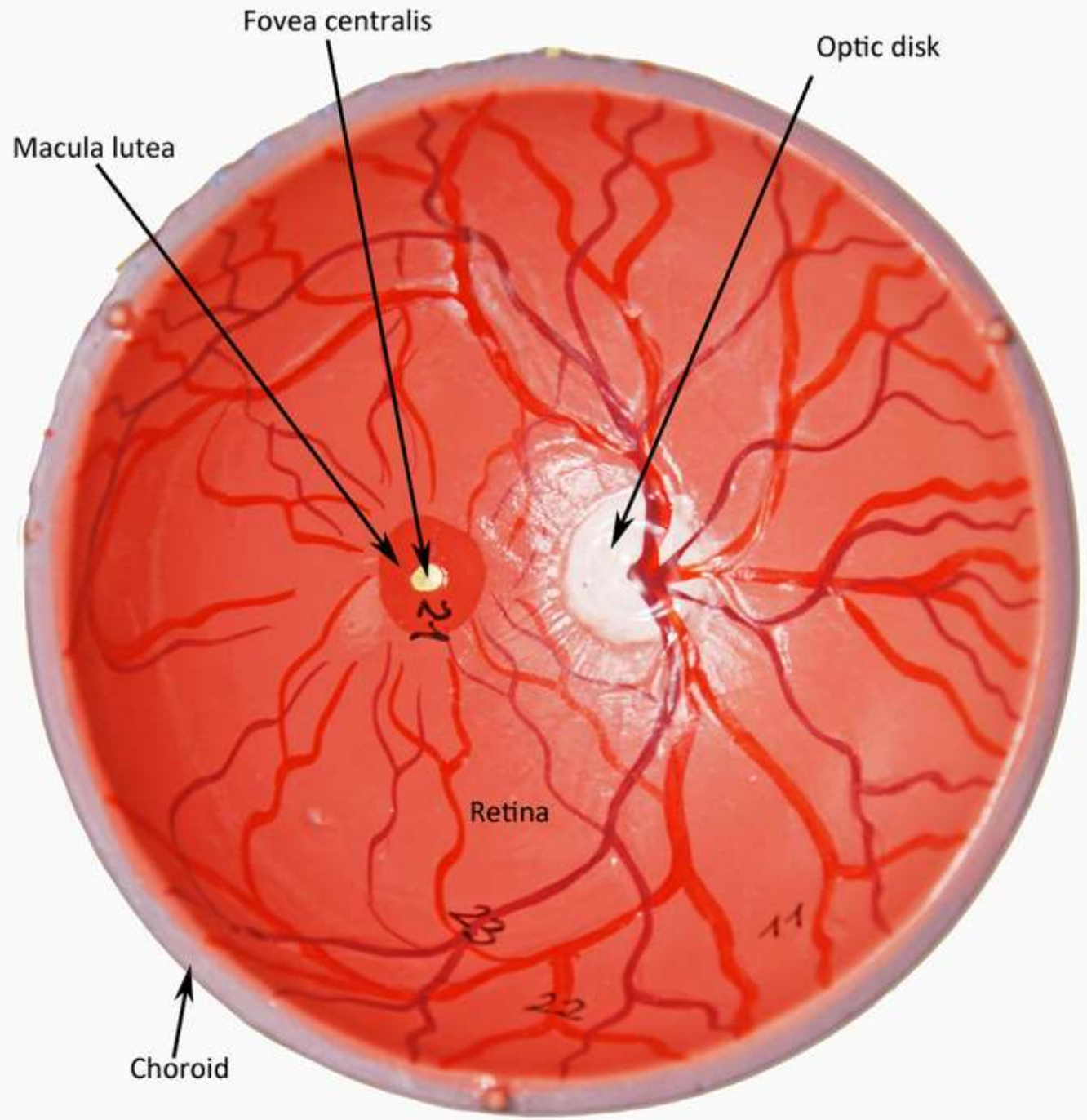
inferior rectus











Fovea centralis

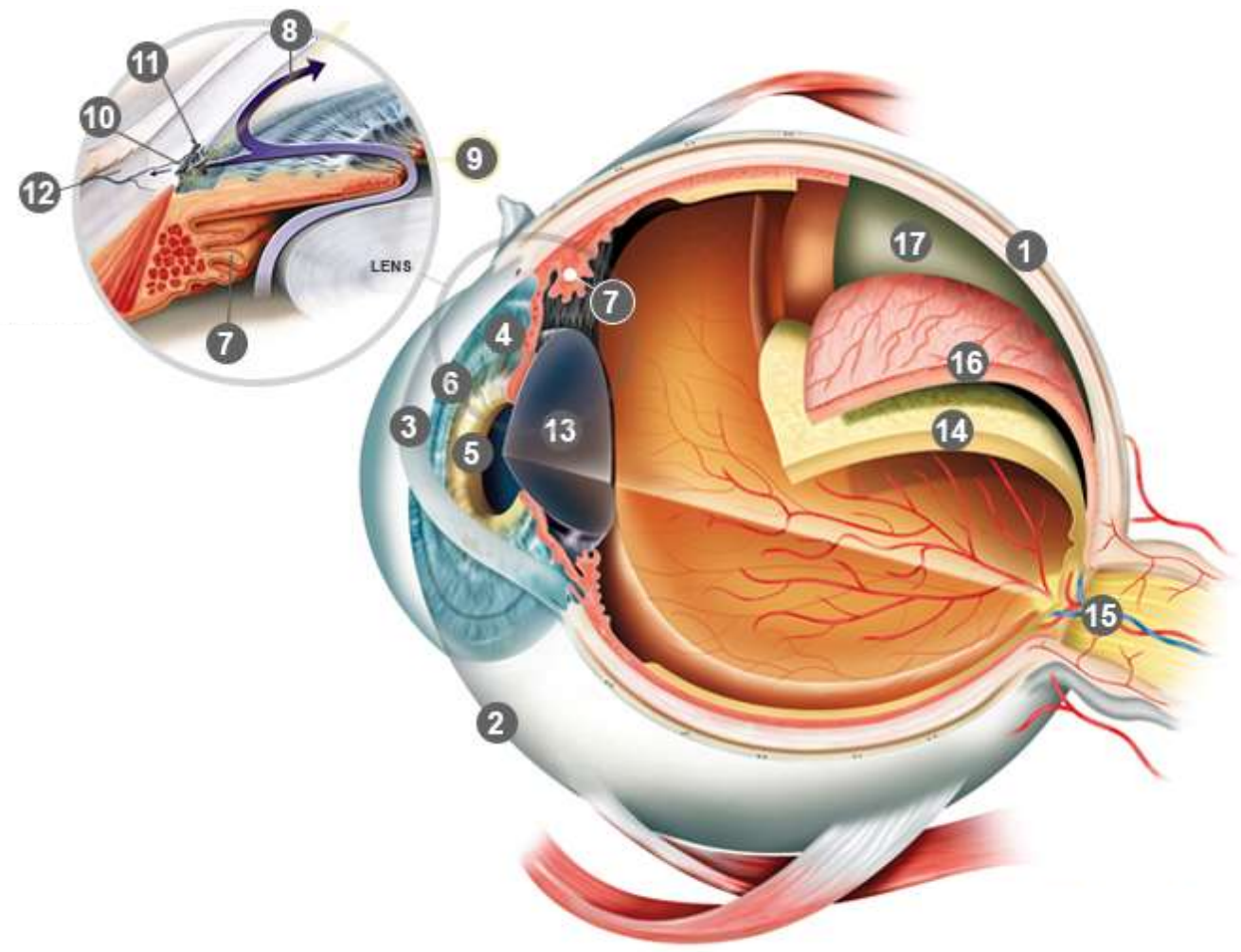
Optic disk

Macula lutea

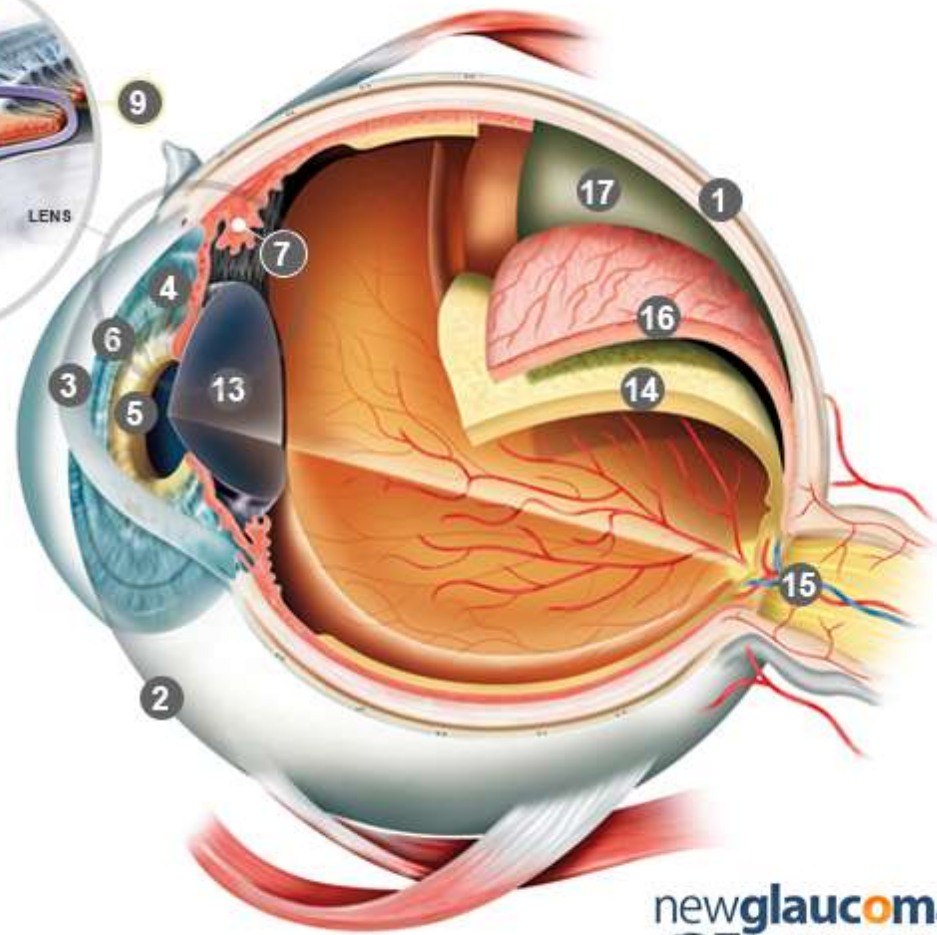
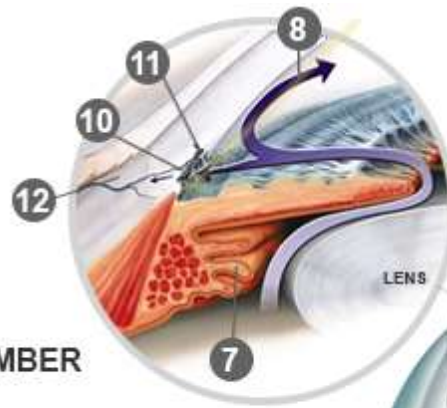
Retina

Choroid

- 1
- 2
- 3
- 4
- 5
- 6
- 7
- 8
- 9
- 10
- 11
- 12
- 13
- 14
- 15
- 16
- 17



- 1 SCLERA
- 2 CONJUNCTIVA
- 3 CORNEA
- 4 IRIS
- 5 PUPIL
- 6 ANTERIOR CHAMBER
- 7 CILIARY BODY
- 8 AQUEOUS HUMOR
- 9 ANGLE
- 10 TRABECULAR MESHWORK
- 11 SCHLEMM'S CANAL
- 12 COLLECTOR CHANNELS
- 13 LENS
- 14 RETINA
- 15 OPTIC NERVE
- 16 CHOROID
- 17 SUPRACHOROIDAL SPACE



Optic nerve

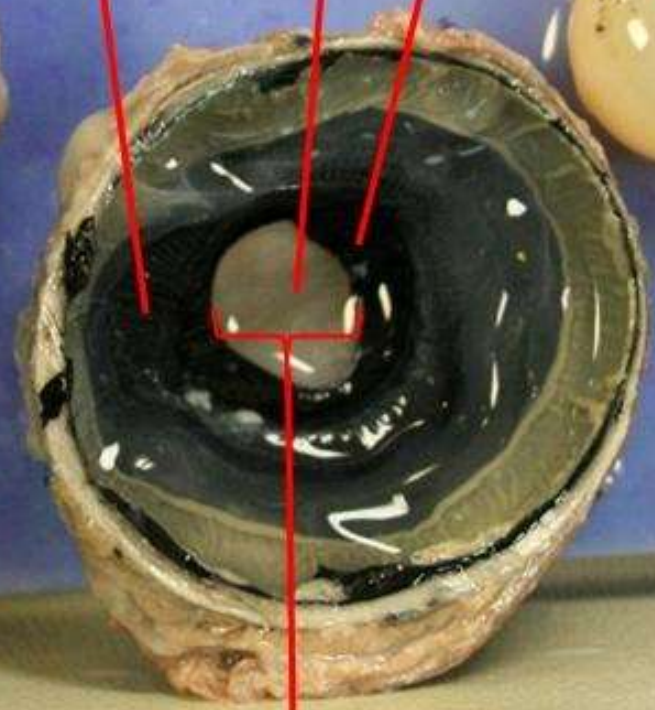
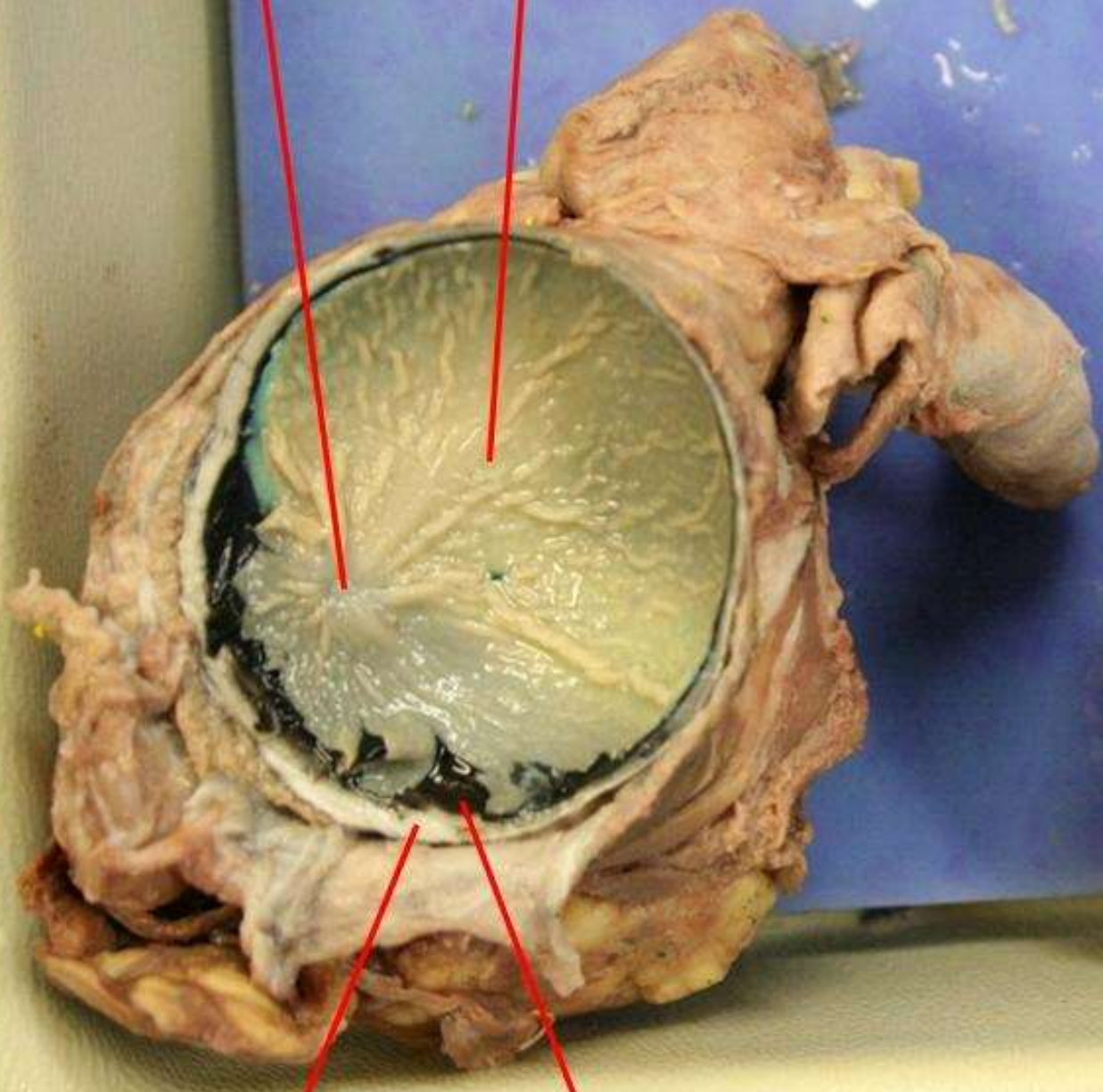
Retina

Ciliary muscle

Cornea

Iris

Lens



Sclera (white)

Choroid (black)

Pupil