

# 2

Large brain 1 mya

Low shoulders 2 mya

Strong wrist 1.4 mya

Long thumb 3.2 mya

Chin 200,000 ya

Forwardly placed opening for spinal cord 7 mya

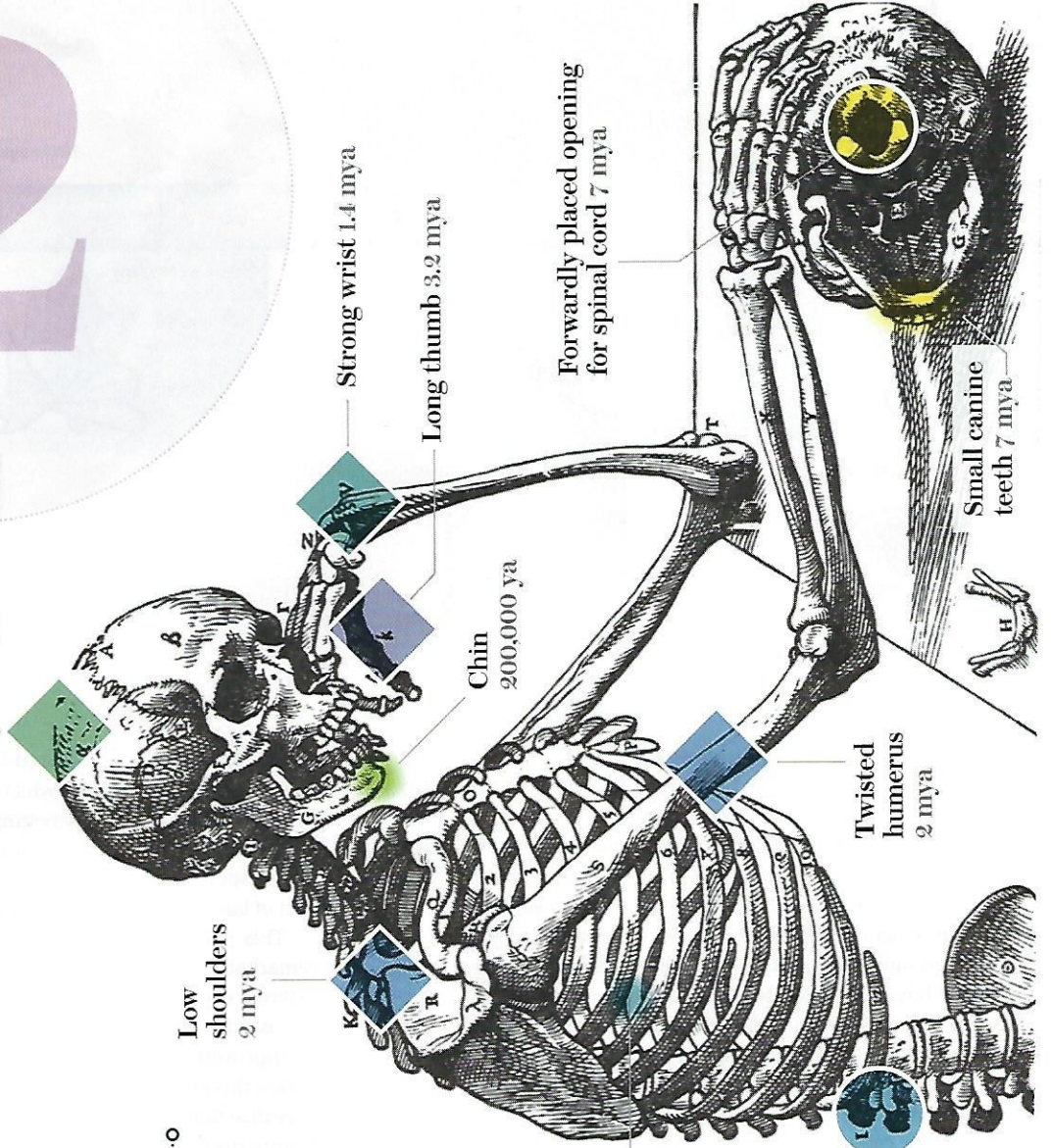
Small canine teeth 7 mya

Twisted humerus 2 mya

Barrel-shaped rib cage 1.6 mya

Long, flexible waist 1.9 mya

# WHAT MAKES US SPECIAL



# 2

Large brain 1 mya

Low shoulders 2 mya

Strong wrist 1.4 mya

Long thumb 3.2 mya

Chin 200,000 ya

Forwardly placed opening for spinal cord 7 mya

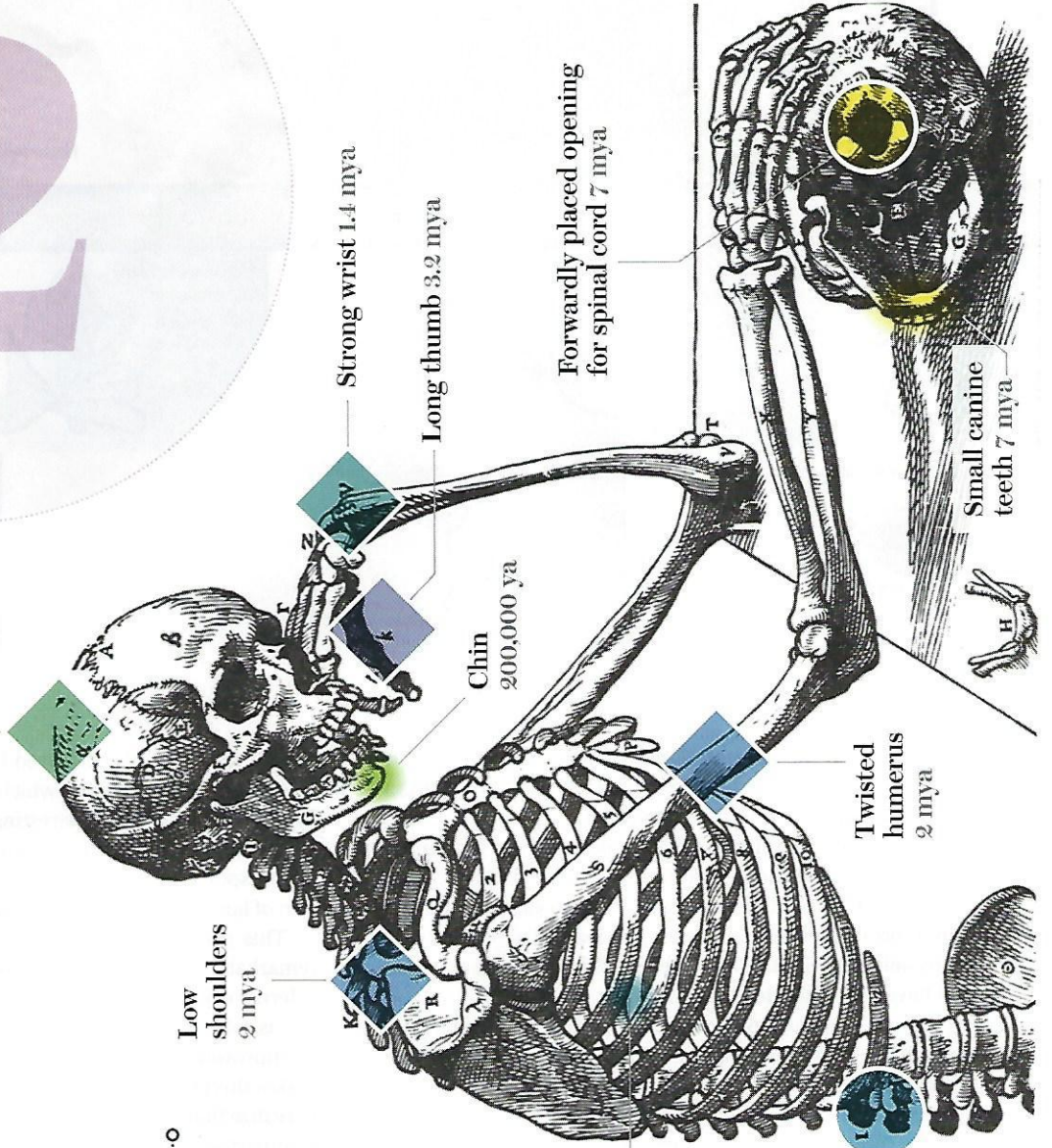
Small canine teeth 7 mya

Twisted humerus 2 mya

Barrel-shaped rib cage 1.6 mya

Long flexible waist 1.9 mya

# WHAT MAKES US SPECIAL



Today

1 million years ago (mya)

2 mya

3 mya

4 mya

5 mya

6 mya

7 mya

Representative traits associated with upright walking/running

Adaptations to tool manufacture and use

Other notable traits

Enlarged femur head 1.9 mya

Long legs 1.9 mya

Strong knee joint 4.1 mya

Short, broad pelvis 3.2 mya

Arched foot 3.7 mya

Short toes 3.7 mya

**HALLMARK TRAITS** of the human body did not all arise anew in our species. Instead they emerged piecemeal in our forebears over millions of years. Many of these traits seem to have helped support two defining trends in our evolution: upright locomotion and tool use.

CORBIS