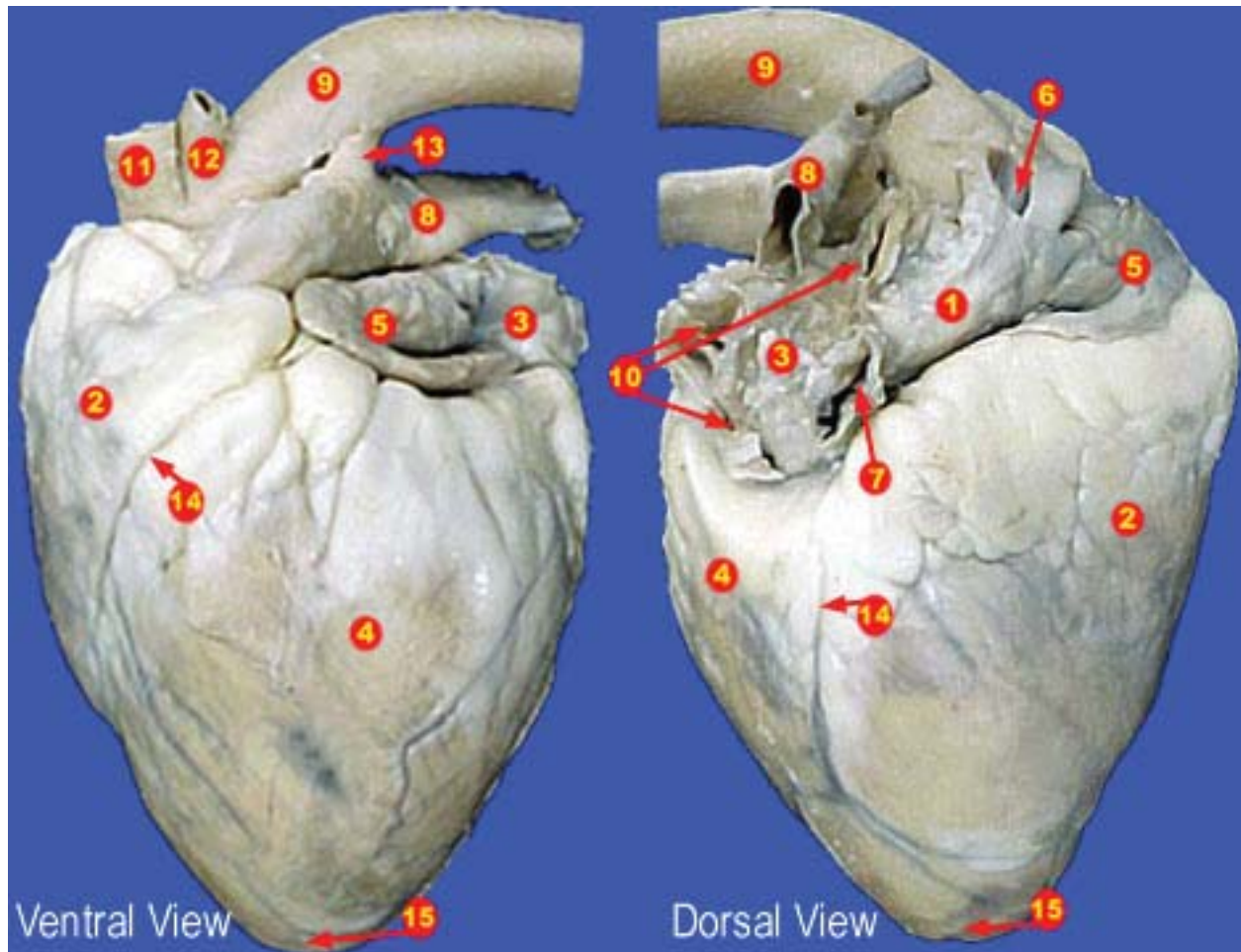
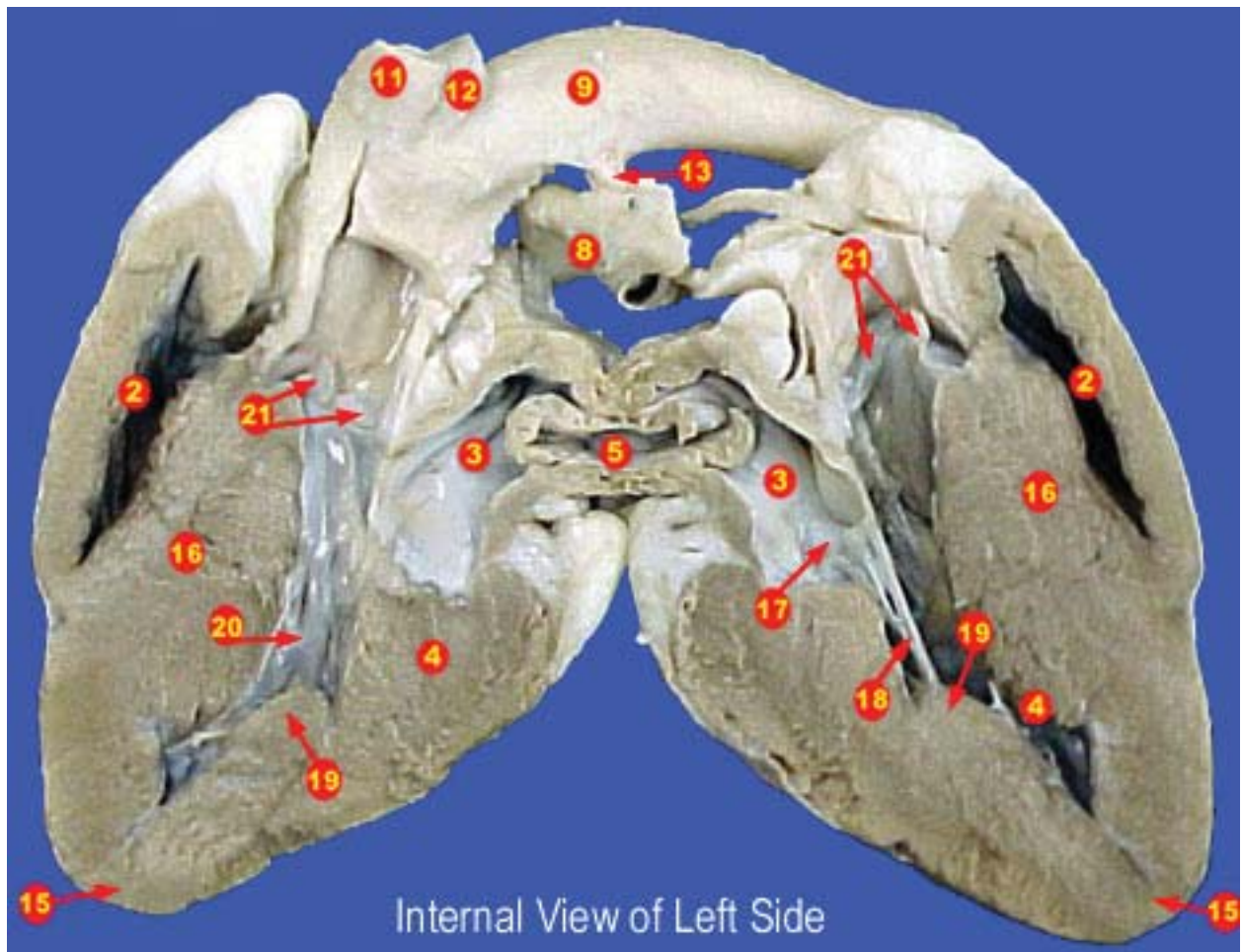


Sheep Heart Dissection



1. Right atrium
2. Right ventricle
3. Left atrium
4. Left ventricle
5. Right / left auricles
6. Precava
7. Postcava
8. Pulmonary truck
9. Aorta
10. Pulmonary veins
11. Innominate or brachiocephalic artery
12. Left subclavian artery
13. Ligamentum arteriosum
14. Coronary arteries
15. Apex
16. Interventricular septum
17. Bicuspid valve
18. Chordae tendineae
19. Papillary muscles
20. Trabeculae carnae
21. Aortic semilunar valve

Sheep Heart Dissection



1. Right atrium
2. Right ventricle
3. Left atrium
4. Left ventricle
5. Right / left auricles
6. Precava
7. Postcava
8. Pulmonary truck
9. Aorta
10. Pulmonary veins
11. Innominate or brachiocephalic artery
12. Left subclavian artery
13. Ligamentum arteriosum
14. Coronary arteries
15. Apex
16. Interventricular septum
17. Bicuspid valve
18. Chordae tendineae
19. Papillary muscles
20. Trabeculae carnae
21. Aortic semilunar valve