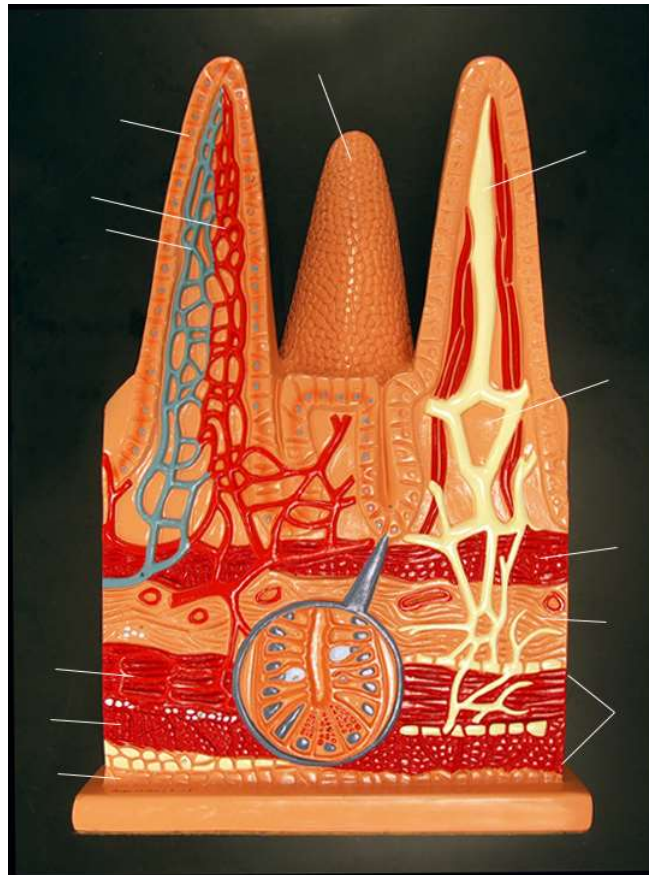
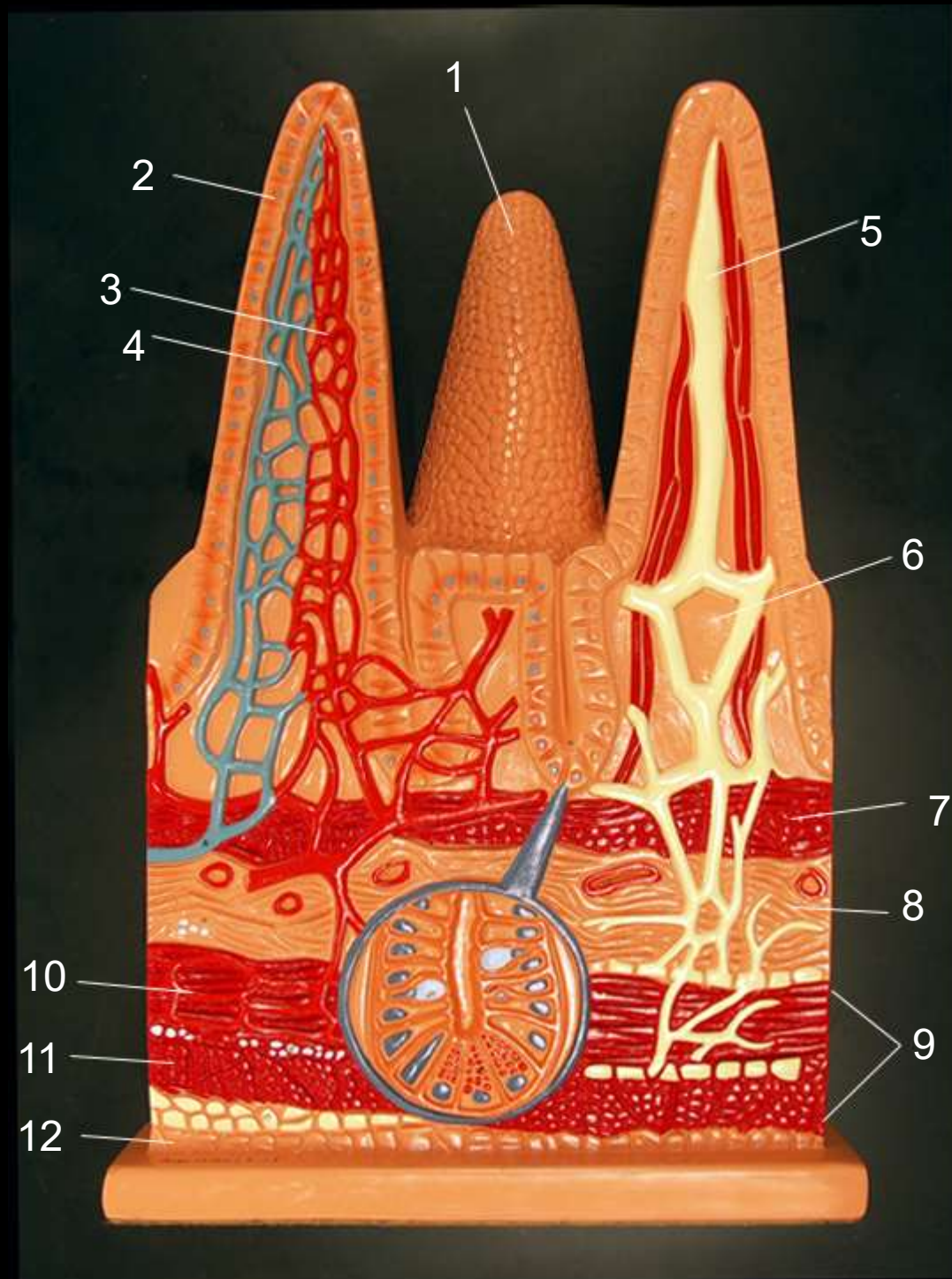
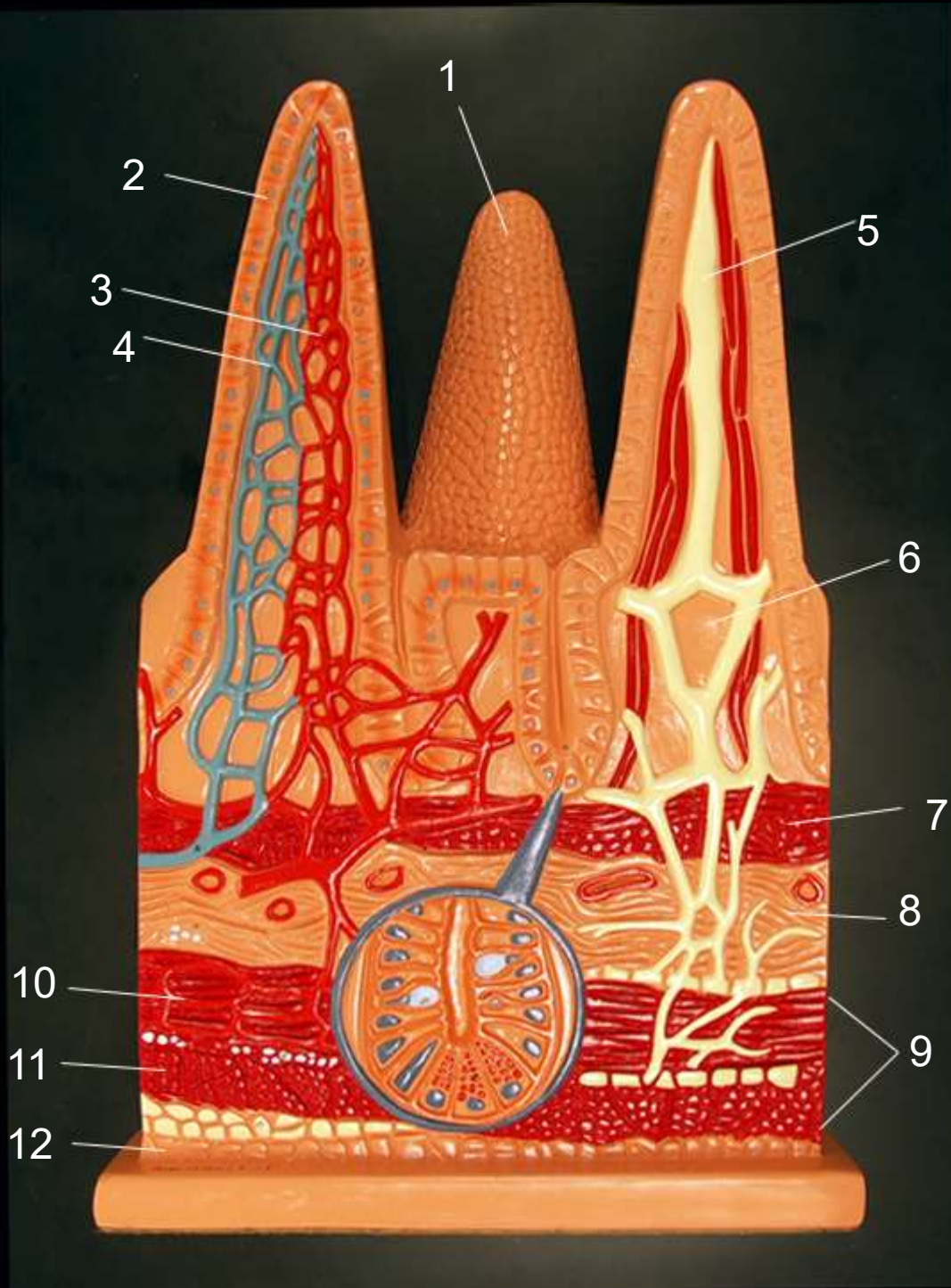


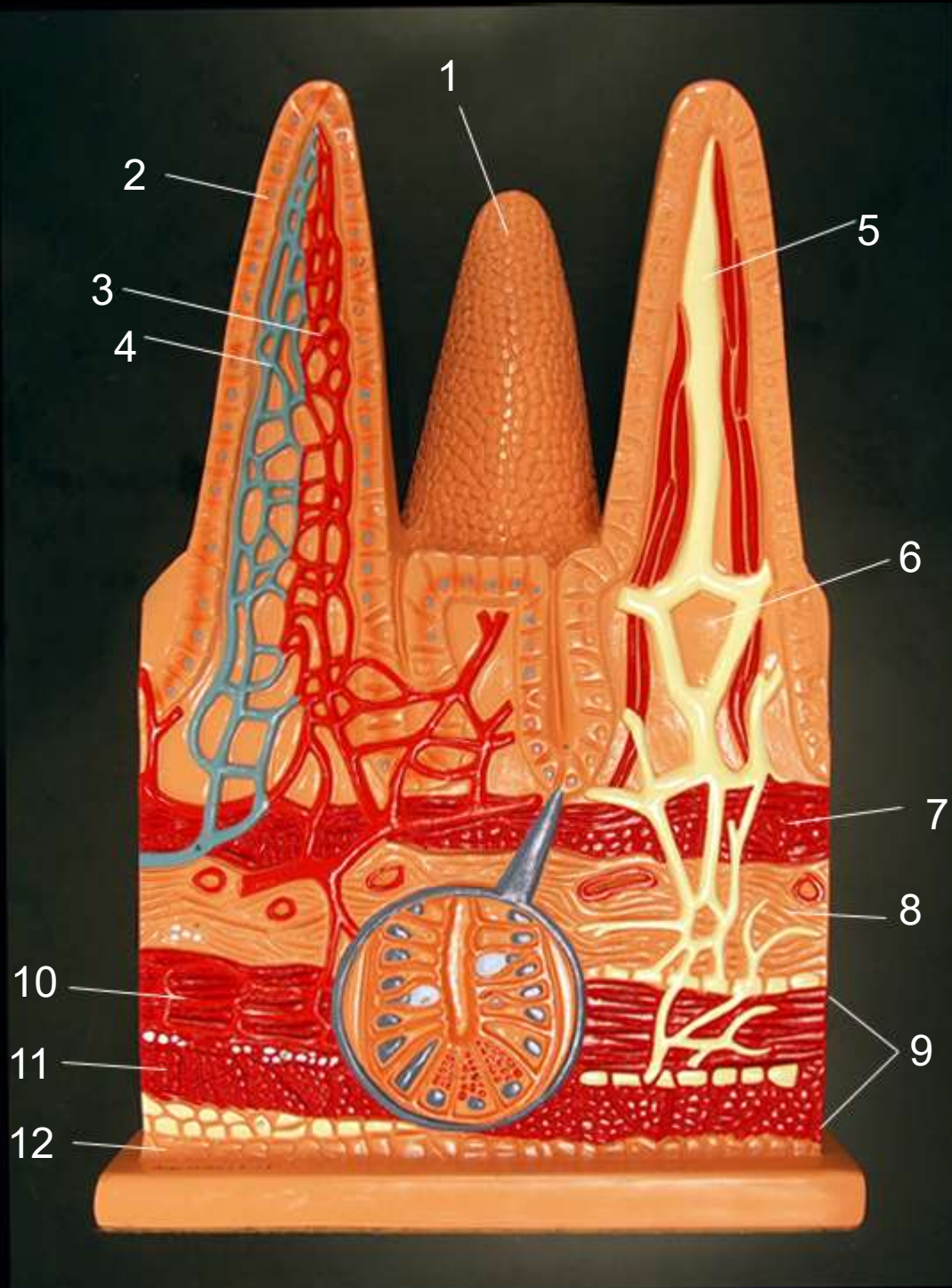
Anatomy of the Small Intestine







1. Villi
2. Epithelial cell (absorptive cell)
3. Continuous capillary (arteriole side)
4. Continuous capillary (venuole side)
5. Lacteal
6. Lamina propria
7. Muscularis mucosae
8. Submucosa
9. Muscularis externa
10. Circular layer / smooth muscle
11. Longitudinal layer / smooth muscle
12. Serosa



Notes:

- * Each villi will contain both a lacteal and capillary network
- * Mucosa = 2 + 6 + 7
- * The enteric nervous system is not shown in this model

Submucosal plexus – regulates secretions of the mucosa

Myenteric plexus – regulates contractions of muscularis externa

Remember – the ANS and hormones may modify action of the enteric nervous system.